

**DiVAL+**  
*Safety & Supplies for Life*

*Spring / Summer  
Workzone Catalog*



**Phone**  
**716.874.9060**

**Toll Free**  
**800.343.1354**

**Online**  
**DiValSafety.com**

*Devoted to the safety of your employees and committed to the bottom line of our partners!*





Order by Phone:  
**800.343.1354**  
7am - 5pm ET Monday - Friday.



Order by Web:  
**www.DiValSafety.com**  
24 Hours a Day. Every Day.



Order by E-Mail:  
**orders@divalsafety.com**  
24 Hours a Day. Every Day.



Order by Fax:  
**716.874.4686**  
24 Hours a Day. Every Day.



Order by Mail:  
**DiVal Safety Equipment, Inc.**  
1721 Niagara Street, Buffalo, New York 14207

## Safety Outlet Store Locations

**Buffalo** Mon-Fri 7am-5pm ET  
1701 Niagara St. Sat 8am-12pm ET

**Rochester** Mon-Fri 7am-5pm ET  
845 West Ave.

**Syracuse** Mon-Fri 7am-5pm ET  
6179 E. Molloy Rd.

## Table of Contents

## Pages

<b>New From DiVal</b> .....	<b>3</b>
<b>Construction Signs</b> .....	<b>4-5</b>
<b>Work Zone Control</b> .....	<b>6-9</b>
<b>Parking Control</b> .....	<b>10-15</b>
<b>HiViz Workwear</b> .....	<b>16-17</b>
<b>Hand Protection</b> .....	<b>18-21</b>
<b>Head Protection</b> .....	<b>22</b>
<b>Safety Footwear</b> .....	<b>23</b>
<b>Eye Protection</b> .....	<b>24-25</b>
<b>Fall Protection</b> .....	<b>26-28</b>
<b>Respiratory Protection</b> .....	<b>28</b>
<b>Hearing Protection</b> .....	<b>29</b>
<b>Personal Cooling</b> .....	<b>30-31</b>
<b>Hydration</b> .....	<b>32-33</b>
<b>Coolers</b> .....	<b>34</b>
<b>Sunscreen</b> .....	<b>35</b>
<b>Bug Spray</b> .....	<b>35</b>
<b>First Aid</b> .....	<b>36</b>
<b>Sun Shades</b> .....	<b>37</b>
<b>JAN / SAN</b> .....	<b>38-42</b>
<b>Services</b> .....	<b>43-47</b>
<b>Lighting</b> .....	<b>48</b>

## PAYMENT OPTIONS

We accept cash, check, charge, or account



*Pricing in this catalog may be subject to change at any time.*

Go on-line at

**www.**  
**DiValSafety**  
**.com**

For detailed  
product descriptions  
and 24 hour ordering





# NEW FROM ~~DIVAL~~ BRAND

## Gloves

- Compliant
- High quality materials
- Best value



## Glasses

DiVal Safety is the exclusive distributor of the DiVal products. These products were developed to exceed your expectations and not your budget.





## Most Popular Signs

Signs identify potential, type, and degree of hazards that may lead to accidental injury or property damage Meets OSHA 29 CFR 1910.145 and ANSI Z535.

- **Adhesive Vinyl:** Flexible printed matte surface for indoor and limited outdoor use. Acrylic adhesive back with peel-off liner.
- **Plastic:** Durable thick for indoor and sheltered outdoors. Non-glare printed surface that's impact resistant. Rounded corners with 3/16" mounting holes.
- **Aluminum:** Metal strength without the rust for indoors and outdoors – resists abrasion, chemical splashes, and washdowns. Rigid thick printed with UV protective overcoat. Rounded corners with 3/16" mounting holes.

## How To Order Signs

- Select Sign; **MCRT135**
- Select Material Code; **Plastic – VP** • Order Part Number; **MCRT135VP**

Material	Material Code	7" x 10"	10" x 14"	18" x 24"	24" x 36"
Adhesive Vinyl	VS	\$8.50	\$12.50	—	—
Plastic	VP	\$9.50	\$13.80	\$30.50	\$55.10
Aluminum	VA	\$13.00	\$21.70	\$50.20	\$90.20

## BIGSigns™



18" x 24"  
24" x 36" MPPE150  
MPPE240



18" x 24"  
24" x 36" MCRT012  
MADM015



18" x 24"  
24" x 36" MCRT115  
MCRT217



18" x 24"  
24" x 36" MCRT089  
MADM101



18" x 24"  
24" x 36" MEQM212  
MEQM213



18" x 24"  
24" x 36" MFPR162  
MFPR163



18" x 24"  
24" x 36" MPPE152  
MPPE116



18" x 24"  
24" x 36" MELC078  
MELC072



18" x 24"  
24" x 36" MELC076  
MELC089



18" x 24"  
24" x 36" MSMK105  
MSMK116



18" x 24"  
24" x 36" MCSP182  
MCSP191



18" x 24"  
24" x 36" MPPE781  
MPPE788



18" x 24"  
24" x 36" MPPE775  
MPPE607



18" x 24"  
24" x 36" MPPE779  
MPPE605



18" x 24"  
24" x 36" MADM863  
MADM868



18" x 24"  
24" x 36" MADM820  
MADC835



18" x 24"  
24" x 36" MADM533  
MADM938



18" x 24"  
24" x 36" MEXT514  
MEXT511



18" x 24"  
24" x 36" MVHR534  
MVHR512



18" x 24"  
24" x 36" MADM309  
MADM320

## Construction Signs



7" x 10"  
10" x 14" MCRT127  
MCRT135



7" x 10"  
10" x 14" MADM002  
MADM003



7" x 10"  
10" x 14" MCRT153  
MCRT154



7" x 10"  
10" x 14" MEQM026  
MEQM124



7" x 10"  
10" x 14" MCRT153  
MCRT154



7" x 10"  
10" x 14" MEQM026  
MEQM124



7" x 10"  
10" x 14" MCRT147  
MCSP188



7" x 10"  
10" x 14" MCRT013  
MCRT008



7" x 10"  
10" x 14" MEQM061  
MCRT016



7" x 10"  
10" x 14" MSTF102  
MCRT009



7" x 10"  
10" x 14" MSTF201  
MCRT010



7" x 10"  
10" x 14" MEQM095  
MEQM098

Additional Safety Signs as well as Custom Signs are available. Contact your sales representative.







## Custom Signs

- No set-up fees
- Unlimited colors with no additional charges
- High-definition, full-color graphics

### How To Place an Order:

- Write or sketch indicating your message, colors, images, symbols, etc.
- Choose from a variety of materials to meet your specific needs.
- Provide visibility and readability with the right size and shape.
- Contact us and send any high resolution graphics (images, logos, etc).



- ← Your Message
- ← Your Graphic
- ← Your Material
- ← Your Size & Shape



**Adhesive Vinyl (VS):** Flexible printed matte surface for indoor and limited outdoor use. Acrylic adhesive back with peel-off liner.

Size	No.	Sold by the Each			
		1-5	6-9	10-24	25+
3 1/2" x 5"	VS35	\$9.80	\$5.95	\$2.65	\$1.30
5" x 7"	VS57	\$13.85	\$8.55	\$4.90	\$3.50
7" x 10"	VS710	\$15.45	\$9.95	\$6.20	\$4.80
10" x 14"	VS1014	\$18.30	\$12.50	\$8.60	\$7.20
Other size/shape	VS555	Call for quote			

**Plastic (VP):** Durable thick for indoor and sheltered outdoors. Non-glare printed surface that's impact resistant. Rounded corners with 3/16" mounting holes.

Size	No.	Sold by the Each			
		1-5	6-9	10-24	25+
7" x 10"	VP710	\$16.55	\$10.80	\$6.90	5.25
10" x 14"	VP1014	\$19.20	\$13.50	\$9.65	7.85
14" x 20"	VP1420	\$31.60	\$23.00	\$17.25	14.25
Other size/shape	VP555	--	Call for quote	--	



**Aluminum (VA):** Metal strength without the rust for indoors and outdoors – resists abrasion, chemical splashes, and fade. Rigid thick printed with UV protective overcoat. Rounded corners with 3/16" mounting holes.

Size	No.	Sold by the Each			
		1-5	6-9	10-24	25+
7" x 10"	VA710	\$16.60	\$12.20	\$9.10	\$7.50
10" x 14"	VA1014	\$21.55	\$17.10	\$14.10	\$12.45
14" x 20"	VA1420	\$37.80	\$30.95	\$26.35	\$23.70
Other size/shape	VA555	Call for quote			



**Adhesive Dura Vinyl (XV):** Flexible, dual-layer for indoor and outdoor use. Clear UV-resistant protective layer is resistant to abrasions, chemical splashes, and fade. Acrylic adhesive back with peel-off liner.

Size	No.	Sold by the Each			
		1-5	6-9	10-24	25+
3 1/2" x 5"	XV35	\$11.90	\$6.55	\$2.95	\$1.50
5" x 7"	XV57	\$15.60	\$9.65	\$5.55	\$4.15
7" x 10"	XV710	\$17.45	\$11.40	\$7.30	\$5.55
10" x 14"	XV1014	\$20.40	\$14.40	\$10.25	\$8.25
Other size/shape	XV555	Call for quote			



## Custom FENCE-WRAP™ Mesh Banners

Transform chain link fencing into an informative safety message area or a marketing and promotional opportunity.

Ideal for conveying short-term messages at construction sites, parking lots, sporting events, and retail centers. Wind-resistant polyester mesh holds up to the elements printed with fade-resistant, UV inks. Double-stitched hem with metal grommets for installation.

- Post multiple messages on one Fence-Wrap™ rather than buying multiple signs
- Available in 4-ft. wide rolls with maximum graphic length up to 150-ft. long
- Images and words are repeatable within maximum length

### How to Order:

- Specify roll size by part number
- Provide your message, and specify if it repeats
- Include a sketch or file of your image, design, logo, etc.
- Pick your colors
- Place your order

Roll Size	Part #	Price
4' x 10'	FBW105	\$82.50
4' x 25'	FBW115	\$206.25
4' x 50'	FBW125	\$412.50
4' x 75'	FBW135	\$618.75
4' x 100'	FBW145	\$825.00
4' x 150'	FBW155	\$1,237.50

For other custom requirements, contact us with your specifications, and refer to part number **FBW555** for a quote.





## JBC Safety® PVC Safety Cones

- 6" upper and 4" lower reflective bands
- 7.5" base
- 28" Height



#142336

\$23.50



#28PVCTL2CC

\$17.35



## Amber Revolving Light with Magnet Base

- Rotating reflector revolves 360°
- 90 flashes per minute
- Size is 5 1/2" x 5" (12 volt bulb)
- Includes A/C adapter



#9290

\$92.25



## Collapsible Traffic Safety Cones



- Two reflective bands (one 6", one 4")
- Rugged water resistant case included
- 5 cones per pack
- 5" L x 5" Width
- 28" Height



Part #	Description	Price
XG285PK	Without Light	\$170.00/pk
XG28L5PK	With Light	\$186.50/pk

## T-CAP Traffic Cone Adapter

- Traffic cone accessory for securing caution tape
- Polyethylene material
- Universally fits into construction cones ranging in height from 12" to 36"



#TCAP

\$8.25





## JBC Safety® Retractable Cone Bar

- Adjustable 5' to 7'
- Bar made with molded black ABS material
- Connect ring made with molded yellow soft PE material



## JBC Safety® 28" Traffic Safety Cone with Base, Lime Green

- Manufactured with post-industrial recycled material
- Meets MUTCD and NCHRP-350 standards
- 3M™ 3340 series sheeting on reflective collared cones (Item #28CL7)



## JBC Safety® 36" Traffic Safety Cone with Reflective Collars

- Durable PVC high visibility traffic cone
- 6" upper and 4" lower reflective collars
- 36" height
- 10 lbs.



## Plastic A-Frame Barricade



- Meet NCHRP-350 and MUTCD standards
- A-Frames sold individually (two required)
- Rail has reflective engineer grade sheeting on both sides

Part #	Description	Price
2181048	A-Frame	\$28.85
2181057	2" x 8" x 8' rail	\$81.60







## Reflective Superbright™ Roll-Up Stop/Slow Paddles

- Roll-Up Reflective Diamond Grade™
- Lightweight and easy to store design
- 24" x 24" octagon
- Meet all MUTCD specifications

#SB243A

**\$113.70**

## Retroreflective Stop/Slow Paddles

- Retroreflective
- 36" staff
- 24" x 24" octagon



#SS24SR

**\$75.40**

## Barricade Tape

**CAUTION CAUTION CAUTION**

#31000CA

**DANGER DO NOT ENTER**

#31000DNE

**FIRE LINE DO NOT CROSS**

#31000FLDNC

**DANGER DANGER DANGER**

#31000DA

**CAUTION MEN WORKING OVERHEAD**

#31000CMWO

**\$10.75/rl**



- Lightweight, yet durable
- 3" x 1000" roll
- For hazard areas, danger zones and construction sites





## Tilt-Adjust™ Single Spring Sign Stand

Single coil spring-loaded design adds stability and flexibility to stand up to wind loads and gusts.

- Leg levers for easy deployment – opens to a wide footprint of 67 1/2" x 42"
- Ergonomic design also allows users to lift up on legs to drop them into place
- Folds to compact size, 8" x 6" x 25 1/4"
- Powder-coated, galvanized steel frames with non-slip rubber tips
- For use with 36" or 48" diamond shaped roll-up construction signs with fiberglass cross-ribs (sold separately)
- Weight: 24 lbs.
- Meets MUTCD specifications

#FRC786

**\$144.10**



## Tilt-Adjust™ Spring-Less Sign Stand

Economy-grade, roll-up stand for use in moderate winds and light traffic conditions.

- Opens quickly and easily to a wide, 66 1/2" x 43 1/2", stable footprint
- Folds to compact size, 6 1/2" x 8 1/2" x 25"
- Powder-coated, galvanized steel frames with non-slip rubber tips
- For use with 36" or 48" diamond shaped roll-up construction signs with fiberglass cross-ribs (sold separately)
- Weight: 22 lbs.
- Meets MUTCD specifications

#FRC750

**\$115.20**

## Accuform Roll-Up Construction Signs

Quickly set up highly visible signs for temporary warning of hazard and construction areas.

- Flexible fabric, quick and easy to setup and takedown – roll up for compact storage and portability
- Safety orange with contrasting black messages and symbols
- Cross-Ribs (sold separately) insert into four corner pockets, providing rigid support
- Overlay signs snap on to change directional or distance message

### Materials:

**Mesh Vinyl (MV)** - Non-reflective, ideal for daytime only applications

**Fluorescent Vinyl (FL)** - Non-reflective, UV stable bright colored vinyl for daytime use only

**Reflective Vinyl (RV)** - High-Intensity retro-reflective fiber reinforced nylon fabric, ideal for attention getting and low-light conditions

**Diamond Grade (DG)** - Fluorescent prismatic reflective sheeting provides maximum brightness for daytime and nighttime applications.



36" FRC305  
48" FRC414

36" FRC315  
48" FRC424  
Requires Size B Left Overlay

36" FRC317  
48" FRC426  
Requires Size A Left Overlay

36" FRC318  
48" FRC427



36" FRC319  
48" FRC428

36" FRC323  
48" FRC432

36" FRC303  
48" FRC412

36" FRC307  
48" FRC416

### To Order

#### Roll-Ups:

Add material code after part number

Material Code		Price per Each			
		Signs		Overlays*	
		36"	48"	36"	48"
Mesh Vinyl	MV	\$73.50	\$90.10	\$32.20	\$38.20
Fluorescent Vinyl	FL	\$79.80	\$92.40	\$35.50	\$39.10
Reflective Vinyl	RV	\$185.20	\$280.10	\$37.50	\$44.20
Diamond Grade	DG	\$261.20	\$372.10	\$48.20	\$55.20

\*Available Overlays



for 36" FRC364  
for 48" FRC486



for 36" FRC366  
for 48" FRC488



for 36" FRC371  
for 48" FRC492



for 36" FRC373  
for 48" FRC494







## ACCUFORM<sup>®</sup> Parking Signs INFORM, PROTECT, & MOTIVATE

- Heavy-duty, .080" aluminum signs will not rust
- Engineer-Grade Prismatic (RA) sign face provides added visibility in low-light conditions
- UV-resistant inks prevent fading during long-term outdoor use
- Supplied with top and bottom center holes for post- or fence-mounting

### Handicapped Parking



12" x 12" FRA268RA  
18" x 18" FRA230RA



18" x 12" FRA229RA



18" x 12" FRA237RA



18" x 12" FRA227RA  
24" x 18" FRA228RA



18" x 12" FRA217RA  
24" x 18" FRA218RA



18" x 12" FRA232RA



18" x 12" FRA222RA  
24" x 18" FRA223RA



18" x 12" FRA234RA  
24" x 18" FRA235RA



18" x 12" FRA216RA  
24" x 18" FRA267RA



18" x 12" FRA146RA



18" x 12" FRA117RA  
24" x 18" FRA269RA



18" x 12" FRA148RA



\* Handicapped Parking signs are subject to change as revised regulations are legislated.

### Supplemental Signs



CALIFORNIA  
8" x 12" FRA239RA



CALIFORNIA  
9" x 12" FRA275RA



OHIO  
6" x 12" FRA247RA



6" x 12" FRA266RA



6" x 12" FRA259RA



6" x 12" FRA252RA

### Parking Enforcement



18" x 12" FRP110RA



18" x 12" FRP116RA



18" x 12" FRP117RA



18" x 12" FRP170RA



18" x 12" FRP171RA



18" x 12" FRP115RA



18" x 12" FRP174RA



18" x 12" FRP126RA



18" x 12" FRP218RA



18" x 12" FRP360RA

Price per Each	
Size	Engineer-Grade Prismatic - RA
6" x 12"	\$22.20
8" x 12"	\$22.10
9" x 12"	\$22.10
12" x 12"	\$34.50
18" x 12"	\$38.20
12" x 24"	\$63.50
18" x 18"	\$63.50
24" x 18"	\$76.20

STATE SPECIFIC  
SIGNS ARE  
AVAILABLE.

CONTACT YOUR SALES  
REPRESENTATIVE FOR  
DETAILS.



## Rubber Parking Stop/Curb Block

72", Black With Yellow Stripes

- Help ensure vehicles stop at the proper location when parking – preventing damage to buildings, sidewalks, curbs and delicate landscape
- Inside your facility, they function as bumper cushions and protection for motorized carts, forklift trucks and vehicles operating in factories and warehouses
- Size: 4"H x 6"W x 72"L



**Ideal for:**

- Parking lots
- Parking garages
- Municipalities



#RFPWS38

**\$55.85**

## Parking Area Marking Stencils



Use over and over for easy permanent and uniform markings.

- Precision cut, 1/16" polyethylene plastic
- Durable, crisp, uniform, accurately-aligned markings
- Stencil will conform to various surfaces
- Roll stencil to flake off dried paint



### Symbols

Symbol	Size	Part #	Price
Arrow	34" x 42" straight 48" x 48" turn	FMS252	\$150.10
Handicap Symbol	47" x 34"	FMS258	\$115.10

### Messages – 8" tall letters

Message	Length	Part #	Price
Fire Lane	46 7/8"	FMS282	\$93.50
No Parking	57 1/2"	FMS283	\$93.50
Reserved	48"	FMS284	\$93.50
Visitor	37 3/4"	FMS285	\$93.50

## Quik-Mark™ APWA Inverted Tip Paint

- Will work on concrete, grass, asphalt and more
- Spray-thru cap and non-clogging spray
- Ideal for construction sites, surveying



Part #	Color	Can	Price
03401	APWA White	16 oz.	\$3.85
03621	APWA Blue	20 oz.	\$4.35





## Bumper Post Sleeves

Cover up and improve the appearance of existing posts and bollards found in plants, facilities, docks, parking lots, drive entrances, and pathways.

Hide unsightly old posts that are rough from chipping, pitting, and peeled paint. Dome-top design slides over cylindrical posts quickly and easily making them look great and keeping them maintenance-free.

- Color-molded polyethylene plastic contains UV inhibitors, for fade resistance
- Smooth finished walls reduce scrapes and dings to vehicles that may sideswipe the post

### For the right post fit...

Measure the post's circumference or diameter and height. Sleeve can be easily cut to length. To install simply slide the sleeve over the post. For a more secure fit, apply an adhesive foam tape to the top and base of the post. Twist while sliding the sleeve down over the post for a snug fit.



	Fits Post Dia.	Fits Post Length to	Part #	Price
	4"	52"	255300022	\$58.95
	6-5/8"	52"	255300025	\$58.95
	5-14/25"	60"	255300024	\$69.95
	7-1/2"	56"	255300029	\$79.95
	8-5/8"	58"	255300030	\$89.95

## FG300 Surface Mount Delineator, 3" Tubular Clover-Leaf

The industry standard for toughness, impact resistance and long-lasting performance for demanding high-speed, 2-way, 2-lane detour operations.

- Polycarbonate base
- Polyethylene tube and unique elastic hinge design
- Extreme durability after being struck continuously
- Post outside diameter: 2.25"
- Reflective band: White 3" 3M™ High Intensity Sheeting
- Base 7" diameter

#114772

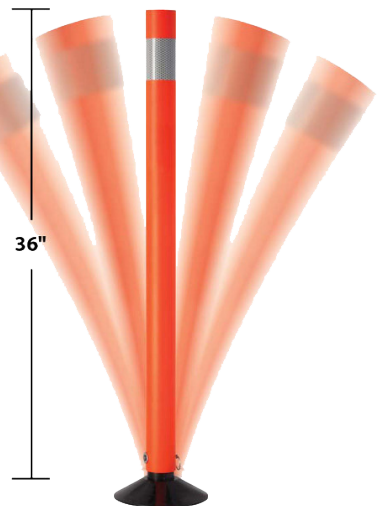
\$49.50



## 2-1/4" Diameter Re-bouncer™ Flexible Traffic Delineator Post

Extreme durability after being struck continuously. If needed, the tubing can be easily replaced on the job site, saving both time and money.

- Polycarbonate base
- Polyethylene tube
- Unique elastic hinge design
- Base may be affixed to surface with butyl pad or epoxy
- Post outside diameter: 2.25"
- Reflective band: White 3" 3M™ High Intensity Sheeting
- Base 7" diameter



#6605134

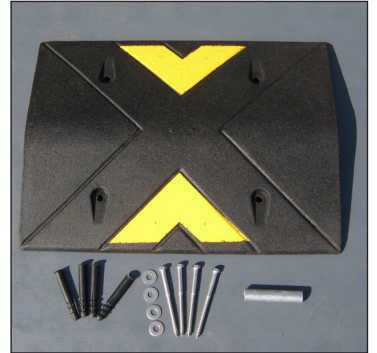
\$49.50



## RK Speed Humps

36" Wide

- Control traffic and reduce vehicle speeds to 20 mph
- 100% recycled tire rubber
- High-traction
- Highly visible
- Extremely durable
- RK Speed Hump Size: 36"W x 72"L x 2-1/2"H
- Center & End Module Size: 36"W x 24"L x 2-1/2"H



Part #	Size	Price
RFSPB363	RK Speed Hump	\$494.55
RFSPB36C	Center Module	\$164.85
RFSPB36D	End Module	\$164.85



## MLSB4 Speed Bump

4" High

- More aggressive speed bump
- Reduce vehicle speeds to 3-5 mph
- Used for specific purposes like construction and driveways
- Section Size: 18"W x 36"L x 4"H
- 100% recycled masticated rubber
- Manufactured to withstand:**
  - Extreme temperatures
  - Constant U.V. light
  - Extreme weather conditions
  - High traffic volume

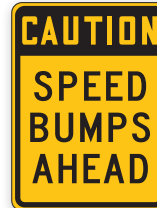
Part #	Size	Price
RFMLS4.2	Type 2 Speed Bump with channel	\$150.95
RFMLS4HW	Kit: 4 bolts, anchor sleeves and washers – 1/2"W x 5"H	\$17.15



## Speed Bump Signs



18" x 12" FRW479RA



18" x 12" FRW484RA



18" x 12" FRW400RA



24" x 24" FRW451RA



24" x 24" FRW422RA

Material	12" x 18"	24" x 24"
Engineer-grade Reflective .080" Aluminum	\$38.10	\$101.10





## Blinker Signs

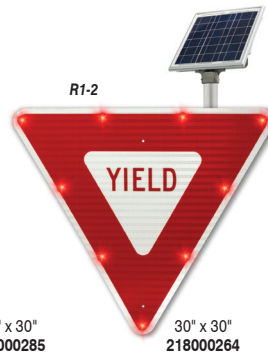
### Maximum Visibility in any Environment

- Flashing LED lights, combined with DG High-Prism sheeting, provide superior luminance and visibility
- Eco-friendly, 13 watt solar panel, 6VDC battery charger require no AC
- Low power allows for smaller panel and cleaner look
- LED automatically measures available light and adjusts the LED flash brightness accordingly
- Up to 30 day autonomy (flashing 24/7)
- Heavy-duty aluminum construction with fully enclosed wiring withstands harsh elements
- Attaches to 2-3/8" post with mounting brackets (sold separately)
- MUTCD-compliant for public roadway use

**\$1,600.00**

### Mounting Bracket

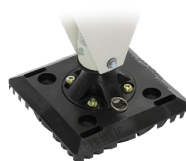
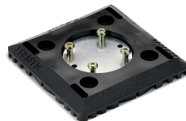
Part #	Price
FRH105	\$6.80



## In-Street Pedestrian Crossing Sign

**Alert motorists to local laws concerning yielding to pedestrians in crosswalks. Ideal for mid-block crosswalk identification.**

- Patented anti-twist reactive spring system
- Designed to return the unit to its original position after impact
- Double-sided 12"W x 36"H panel with FYG 3M™ Diamond Grade™ sheeting
- Total height is 47"
- Post and panel are constructed of flexible polyethylene plastic
- Resistant to ultra-violet light, ozone and hydrocarbons
- NCHRP-350 Approved
- 12lbs, quick release surface mount base
- Hardware to Install Not Included



### Yield To Pedestrian Legend

Base	Part #	Price / Each
Quick Release Surface Mount	163600011	\$325.00



## Fluorescent Yellow-Green Signs

- Fluorescent Yellow-Green (FYG) signs provide superior visibility
- Combination of fluorescent colors and micro-prismatic, retroreflectivity in the sheeting
- Provides superior luminance and visibility
- Catches the eye even at wide angles and in broad daylight



12" x 18"    FRW208  
18" x 24"    FRW210



30" x 30"    FRW204

When ordering, add material code after part number.

Price per Each	
Size	DG High-Prism - DP
12" x 18"	\$62.40
18" x 24"	\$123.10
30" x 30"	\$226.50





## Traffic Signs



Post traffic signs to safely direct and regulate the flow of vehicles and pedestrians in and around parking areas, dock areas, and roadways.

- Heavy-duty, .080" aluminum signs will not rust
- Reflective sign face for added visibility in low-light conditions
- UV-resistant inks prevent fading during long-term outdoor use
- Top and bottom center holes for post- or fence-mounting

### Material Descriptions:

- **Engineer-Grade Prismatic (RA)** - Good choice for added visibility in low-light conditions. Type I
- **High-Intensity Prismatic (HP)** - Better choice for greater visibility. 3X brighter than Engineer-Grade. Type III, IV, X



Size	Engineer Reflective Part #	Price/ea	High Intensity Part #	Price/ea
18" x 18"	FRR012	\$56.10	FRR036	\$70.20
24" x 24"	MR1124	\$91.20	FRR048	\$112.10
30" x 30"	MR1130	\$126.20	FRR060	\$154.20

Size	Engineer Reflective Part #	Price/ea	High Intensity Part #	Price/ea
24" x 24"	FRR424RA	\$91.20	FRR424HP	\$112.10

## Traffic Control

- Available in Engineer Reflective or High Intensity



12" x 36" MR61L



12" x 36" MR61R



24" x 18" FRR126



18" x 30" FRR026



12" x 18" FRW522  
18" x 24" FRW523



24" x 18" FRR124



18" x 12" FRR2185  
24" x 18" FRR2245



18" x 12" FRR21810  
24" x 18" FRR22410



18" x 12" FRR21815  
24" x 18" FRR22415



18" x 12" FRR21820  
24" x 18" FRR22420



18" x 12" FRR21825  
24" x 18" FRR22425



24" x 18" MR47AR



24" x 18" MR62R



24" x 18" MR62L



24" x 24" FRW427



24" x 24" FRW314



24" x 24" FRW464



24" x 24" MR32R



24" x 24" MR32L



24" x 24" MR5124

### How To Order Traffic Signs

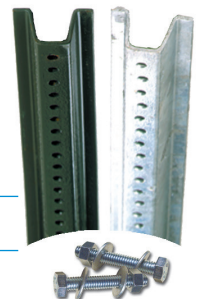
- Select Sign: 12" x 36", MR61L
- Select Material Code: **Engineer Reflective – RA** • Order Part Number; MR61LRA

Price per Each

Size	Engineer Reflective – RA	High Intensity – HP
12" x 18"	\$38.40	\$47.20
12" x 36", 24" x 18"	\$76.10	\$92.20
18" x 30"	\$98.10	\$119.20
24" x 24"	\$91.20	\$111.30

### Sign Posts and Hardware

- Posts are available in 2 colors and 2 sizes
- 6' post standard weight- 1.12 lb./ft.
- 8' post heavyweight- 2.00 lb./ft.
- Hardware set (sold separately) contains 2 nuts, 2 bolts, and 4 washers



Length	Green		Galvanized	
	No.	Each	No.	Each
6-ft.	HSP106	25.50	HSP107	\$30.10
8-ft.	HSP108	50.10	HSP109	\$60.10

Item	No.	Set
Hardware Set	HFN208	3.10



## Radians Hi-Viz Hooded Class 3 Zip Sweatshirt

- 7.25 oz Polyester fleece material
- 2 lower pouch pockets
- Hood is lined with double birds-eye mesh



ANSI CLASS

**3**



Part #	Size	Color	Price
SJ01G(size)	MD-2XL	Lime	\$34.50
SJ01O(size)	MD-2XL	Orange	\$34.50
Available at additional cost 3XL-5XL			

## Radians® Class 2 Mesh Economy Safety Vest

- Zipper front closure
- 2" silver tape reflective material
- 2 pockets
- 100% polyester mesh



ANSI CLASS

**2**



#1089(size)

**\$14.95**

(Size MD-XL)



Available at additional cost: 2XL-5XL

## Radians® Class 3 Hi Viz Long Sleeve Shirt

- 100% wicking polyester mesh
- Maximum breathability, without compromising durability
- 2" reflective stripes, adhered by heat transfer
- Meets Class 2 and Class 3 ANSI Standards



ANSI CLASS

**3**



#ST112PGS

**\$19.99**

(Size MD-3XL)

Available at additional cost: 4XL-5XL

## Radians® Class 2 Hi-Viz Safety T-Shirt

- Arid Birdseye Mesh allowing for maximum breathability, without compromising durability
- Max-Dri™ 100% moisture wicking mesh technology
- 2" reflective stripes, adhered by heat transfer



ANSI CLASS

**2**

#ST112PGS

**\$14.50**

(Size MD-XL)



Available at additional cost: 2XL-5XL



## Radians Class 3 Heavy Duty Rip Stop Waterproof Rainwear RADIANS™



#RW32J



#RW32P



#RW32KP

ANSI CLASS

3

- 300D PU coated rip stop oxford polyester material
- 3M™ 2" silver reflective tape
- Waterproof & breathable

### Jacket

- Attached hood
- D-ring pass through
- Adjustable cuffs with Velcro® and mic tabs shoulders
- Zipper front closure with snap storm flap

### Overalls

- Internal pocket for optional knee pad (RW32KP sold separately) and Velcro® closure over zipper fly
- Knee high leg zipper with adjustable cuffs
- Side cargo pocket

Part #	Size	Price
RW32J(size)	MD-XL	\$78.95
RW32P(size)	MD-XL	\$52.00
Available at additional cost: 2XL-5XL		
RW32KP	Knee Pad	\$13.50

## Radians Class 3 Lightweight Rain Suit RADIANS™

- 150D PU coated oxford polyester material
- 2" silver reflective tape

### Jacket

- Vented back cape, detachable hood
- Zipper front with snap storm flap
- Pockets with flap cover
- Elastic sleeve cuff

### Overalls

- Pockets
- Adjustable cuffs
- Elastic waist



#RW10J

#RW10P

ANSI CLASS

3

Part #	Size	Price
RW10J(size)	MD-XL	\$33.90
RW10P(size)	MD-XL	\$16.80
Available at additional cost: 2XL-5XL		

## Radians Class 3 Fortress™ Rainwear

- .35 mm PVC/Poly material
- Self extinguishing PVC material SE D6413 Tested

### Jacket

- Detachable hood (included)
- Vented cape back with D-ring pass through
- Inner sleeve cuff with hook-and-loop adjustment

### Overalls

- Bib style with fly front
- Adjustable suspenders

#RJ07

ANSI CLASS

3

#RB07



RADIANS™

Part #	Size	Price
RJ07(size)	MD-XL	\$46.25
RB07(size)	MD-XL	\$21.75
Available at additional cost: 2XL-5XL		



## DiVal Goatskin Leather Palm Mechanics Gloves

- Slip on style open cuff
- Smooth, flexible goat grain leather palm and fingers
- Durable, breathable lightweight back

#1957LOGO(size)

**\$13.50/pr**

(Size MD-2XL)



## DiVal Rhino-Tex™ Leather Palm Mechanics Gloves, Hi-Viz

- Comfortable neoprene cuff with Velcro® closure for a secure fit
- AirMesh™ breathable back
- G-Grip™ anti-slip traction palm patches

#2950HVLOGO(size)

**\$16.55/pr**

(Size MD-2XL)



## DiVal Rhino-Tex™ Leather Palm Mechanics Gloves

- Outstanding comfort and durability with Hyperfit
- Breathable, washable and abrasion resistant
- Neoprene knuckle guards
- G-Grip™ patches on palm add maximum traction

#1950LOGO(size)

**\$14.75/pr**

(Size MD-2XL)



## Deluxe Work Glove with Impact Protection



**DiVAL**  
Safety & Supplies for Life

- Premium goat driver
- Hi-Viz Thermo Plastic Rubber on back of the hand and fingers

### Applications:

- Oil and gas
- Construction
- Masonry
- Agriculture
- Iron/Steel work

Part #	Size	Style	Price
DV36IMP(size)	SM-XL	Deluxe	\$12.50
DV36IMPIN(size)	SM-XL	Heavy Insulated	\$17.50



## Helix<sup>®</sup> 2066 Gloves

- 15-gauge Dyneema<sup>®</sup> Diamond shell
- Flexible foam nitrile palm coating provides superior grip
- Knit wrist
- Silicone-free

HexArmor



#2066(size)

\$15.49/pr

(Size MD-2XL)

## Chrome Series<sup>®</sup> Hi-Vis SlipFit<sup>®</sup> 4033 Gloves

- Made with SuperFabric<sup>®</sup>
- Oil and abrasion-resistant synthetic leather
- Touchscreen compatible
- Level A8 cut resistance

HexArmor



#4033(size)

\$28.49/pr

(Size MD-2XL)

## Rig Lizard Thin Lizzie<sup>™</sup> 2090X Gloves

- Knit: 13-gauge HPPE and glass fiber blend shell
- Level A4 cut resistance
- Flexible sandy nitrile palm coating
- Back-of-hand IR-X<sup>®</sup> Impact Exoskeleton<sup>™</sup>

HexArmor



#2090X(size)

\$20.99/pr

(Size MD-2XL)

## Chrome SLT<sup>™</sup> 4060

- Grip in dry or light oil situations
- Back-of-hand impact protection
- ANSI/ISEA 105 Conductive Heat Level 2
- ANSI/ISEA Level A5 cut resistance

HexArmor



#4060(size)

\$25.49/pr

(Size MD-2XL)





## 15 Gauge Sponge Nitrile Dipped Gloves

- White nylon shell
- Provides flexibility, durability and dexterity
- Sponge nitrile coating gives glove an excellent dry, oil or wet grip



#715SNFP(size)

**\$2.65/pr**

(Size XS-XL)



## PosiGrip® 713HUTS PU Palm Coated Gloves

- Wired fingertips for use with touch screens
- 10 times stronger than steel
- 40% stronger than blended fabrics
- Provides ANSI Cut Level A2 protection



#713HUTS(size)

**\$9.95/pr**

(Size SM-2XL)



## PosiGrip® Barracuda™ PU Palm Coated Gloves

- White High Performance Polyethylene (HPPE) shell
- 10 times stronger than steel
- 40% stronger than blended fabrics
- Provides ANSI Cut Level A2 protection



#C720DGU(size)

**\$6.75/pr**

(Size MD-2XL)



## Premium Cow Grain Cut Resistant Driver Gloves

- ANSI Puncture 3
- Kevlar sewn
- EN 388 2432
- Level 4 Arc flash liner



#KS992K(size)

**\$16.50/pr**

(Size MD-3XL)

**CAT  
4**





## Keystone Thumb Select Grain Cowhide Driver Gloves

- Flexible keystone thumb construction
- Grain cowhide leather
- Shirred elastic wrist
- Gunn cut



#995KOT

**\$4.30/pr**

(Size SM-XL)

available at additional cost: 2XL



## Black Microfoam Nitrile Palm Dip on Gray Nylon Shell

- 21 CFR compliant
- ANSI Cut Level 1
- Excellent abrasion resistance
- Foam nitrile coating with micro capillaries that channels oil from the surface of the glove



#715NFTP

**\$2.65/pr**

(Size SM-2XL)



## Select Split Cowhide Leather Double Palm Gloves

- Leather knuckle strap that provides extra protection where you need it the most
- Reinforced double split leather on palm and index finger
- 2½" rubberized safety cuff



#500DP

**\$2.65/pr**



## Standard Split Cowhide Palm Rubberized Cuff Gloves

- Standard split cowhide leather palm
- Fingertips and knuckle strap gloves
- Rubberized safety cuff



#558

**\$2.85/pr**





## DiVal Hard Hats



- Low profile shell
- High density polyethylene
- Universal accessory slots on sides
- Replaceable and washable soft brow pad
- Meets ANSI Z89.1-2009 standards, Type 1, Class C, G and E



\$5.95

#DVHH

- 4 point pinlock suspension
- "Tuck Away" adjustments

Part #	Color
DVHHBLU	Blue
DVHHGRN	Green
DVHHOR	Orange
DVHHRED	Red
DVHHWH	White
DVHHYLW	Yellow

TYPE 1



\$9.45

#DVHHRAT

- 6 point ratchet suspension
- Turn knob for easy adjustments

Part #	Color
DVHHRATBLU	Blue
DVHHRATGRN	Green
DVHHRATOR	Orange
DVHHRATRE	Red
DVHHRATWH	White
DVHHRATYLW	Yellow

## MSA V-Gard® Fas-Trac® Ratchet Slotted Hard Hat

- Polyethylene shell
- Self-adjusting crown
- Slotted design allows accessories to be attached
- Meets ANSI/ISEA Z89.1 standards for Type 1 (top impact), Class E

TYPE 1



Color	Full Brim	Regular
White	#475358	#475369
Blue	#475359	#475368
Yellow	#475360	#475366
Hi-Viz Orange	#488146	#10021292
Lime Green	#815565	#815570
<b>Price</b>	\$11.90	\$17.50

Other Colors Available

## AboveView™ Hard Hats



- See-through visor that allows workers to see hazards overhead
- Large absorbent cotton or easy-to-clean vinyl brow pad
- Flex-Gear® ratchet suspension
- Front, side and rear vertical height adjustment settings
- ANSI/ISEA Classification: Z89.1, Type I, Class E and G.

TYPE 1



\$29.15

Part #	Color
AVWHRG	White
AVBKRG	Black
AVKBRG	Blue
AVRDRG	Red
AVYLRG	Yellow
AVLPRG	Light Pink





## Timberland PRO® WP Hyperion 6" Alloy Toe



- Electrical hazard
- Waterproof
- Mesh lining & anti-fatigue
- Fiberglass shank



Part #	Size
90646(size)	7-12,13,14,15
Available in Medium & Wide widths	

**\$150.00**

## Timberland PRO® Endurance 6" Steel Toe



- Electrical hazard
- Puncture-resistant plate
- Mesh lining & anti-fatigue



Part #	Size
52562(size)	7-12,13,14,15
Available in Medium & Wide widths	

**\$150.00**

## Timberland PRO® WP Direct Attach 6" Steel Toe



- Electrical hazard
- Insulated & waterproof
- Nylon shock-diffusion plate



Part #	Size
65016(size)	7-12,13,14,15
Available in Medium & Wide widths	

**\$135.00**

## Timberland PRO® Pit Boss 6" Steel Toe



- Electrical hazard
- Nylon shock-diffusion plate



Part #	Size
33034(size)	7-12,13,14,15
Available in Medium & Wide widths	

**\$115.00**



Z12R



Z13R

## Di-Vision Rimless Safety Readers, Anti-Scratch Coating

- For the worker who needs to see up close
- Polycarbonate lens has 99.9% UV absorption
- Secure fit without uncomfortable pressure points
- Lightweight, rimless design provides all day user comfort
- Meets ANSI Z87.1+

### Z13R • Clear Readers

Part #	Magnification	Price
A1113R100CHC	1.00 x	\$4.95
A1113R125CHC	1.25 x	\$4.95
A1113R150CHC	1.50 x	\$4.95
A1113R175CHC	1.75 x	\$4.95
A1113R200CHC	2.00 x	\$4.95
A1113R225CHC	2.25 x	\$4.95
A1113R250CHC	2.50 x	\$4.95
A1113R300CHC	3.00 x	\$4.95

### Z12R • Dark Readers

Part #	Magnification	Price
A1113R150GHC	1.50 x	\$5.45
A1113R200GHC	2.00 x	\$5.45
A1113R250GHC	2.50 x	\$5.45
A1113R300GHC	3.00 x	\$5.45



## Di-Vision Wrap-Around Safety Glasses

- Lightweight, rimless design provides all day user comfort
- Scratch resistant, 100% polycarbonate lens
- 99% protection from harmful UV-A and UV-B rays
- Meets ANSI Z87.1+ high velocity impact standards

Part #	Lens	Price
A1112CHC	Clear	\$1.80
A1112GHC	Gray	\$1.95
A1112AHC	Amber	\$1.95



## Di-Vision Sport Lens Safety Glasses

- Lightweight, rimless design provides all day user comfort
- Secure fit without uncomfortable pressure points
- Scratch resistant, 100% polycarbonate lens
- Meets or exceeds ANSI Z87.1 standards for high impact requirements

Part #	Lens	Price
A1113CHC	Clear	\$2.25
A1113CHCAF	Clear, Anti-Fog	\$2.80
A1113GHC	Gray	\$2.60
A1113GHCAF	Gray, Anti-Fog	\$3.05
A1113AHC	Amber	\$2.60
A1113IOHC	Mirrored	\$2.80



## Introducing Di-Vision A1114 Curve Sport Safety Glasses

- Lightweight, semi-rimless design provides all day user comfort
- Sleek, sporty style with wraparound lens protection
- Supplied with an adjustable neck cord
- Anti-scratch lens coating
- Soft rubber nose pads help to keep glasses in place
- Bayonet temples with flexible rubber tips offer a comfortable, secure fit
- 9 base curve lens



#A1114CAF

\$3.60



Anti-Fog

#A1114IOHC

\$3.95



#A1114GAF

\$3.80



Anti-Fog

#A1114BHC

\$3.90



#A1114AAF

\$3.80



Anti-Fog

#A1114BMIR

\$4.60



#A1114CAMCAF

\$4.10



Anti-Fog

#A1114RMIR

\$4.60



#A1114CAMGAF

\$4.30



Anti-Fog

#A1114CAMSMIR

\$5.90



#A1114CAMA AF

\$4.30



Anti-Fog

#A111430

\$6.70



Shade 3

#A1114CAMBAF

\$4.90



Anti-Fog

#A111450

\$6.70



Shade 5





## Workman® Full Body Harness

- Color-contrasting thigh and torso straps simplify donning
- Web retainer collars to keep excess webbing neat
- OSHA 1910.66, OSHA 1926.502, ANSI A10.32, OSHA Z359.1-2007, CSA: Z259.10-M90



Part #	Leg Straps	Size	Price
DV7016M	Tongue Buckle	Universal	\$51.00
DV7016XLM	Tongue Buckle	XL	\$54.00
DV7016XXLM	Tongue Buckle	XXL-XXXL	\$57.00
DV7007M	Qwik-Fit™	Universal	\$47.75

## Diamond® Energy Absorbing Lanyard w/ Internal Shock Pack

- Keeps average fall arrest forces below 900lbs
- Durable polyester sheath for increased abrasion
- Pouchless design for lighter weight and comfortable wear
- Single leg FP Diamond is bi-directional to make training easier
- Meet applicable OSHA regulations



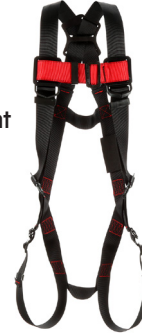
Part #	Style	Size	Price
DV6REGM	Snap Hook	6'	\$36.90
DV6REBM	Rebar Hook	6'	\$39.75

## PRO™ Harnesses



- Back D-ring
- Tongue buckle leg straps
- Parachute torso adjusters
- Built-in lanyard keepers
- Impact Indicator
- OSHA and ANSI Compliant

#1161571



#1161309

### Construction Style also features:

- Body belt/hip pad with side D-rings
- Shoulder pads

Part #	Style	Size	Price
1161570	Vest	SM	\$49.95
1161571	Vest	MD/LG	\$49.95
1161572	Vest	XL	\$49.95
1161308	Construction	SM	\$93.50
1161309	Construction	MD/LG	\$93.50
1161310	Construction	XL	\$93.50

## Roofers Kit, 50'



#10125791

- Standard safety Workman harness
- Reusable hinged roof anchor
- SureGrab manual rope grab
- 50' lifeline, vert rope with LC snap
- 5 Gallon bucket with lid

**\$120.65**



## Workman® SRL w/ Swivel Snaphook & Load Indication

- Thermoplastic housing & impact-absorbing bumpers
- 400 lbs working capacity
- 3/4" Swivel snaphook
- Alerts users when SRL has been involved in a fall
- Certification to ANSI Z359.14-2012
- Meets all OSHA requirements



Part #	Size	Material	Price
6330600A	20'	Stainless Steel	\$317.80
10119507	30'	Galvanized	\$426.20
10120724	30'	Stainless Steel	\$452.70
10121834	50'	Galvanized	\$554.35
10121778	50'	Stainless Steel	\$597.05

## MSA Workman 12' PFL with 1" Carabiner, 36C Snap Hook

- Most versatile fall protection devices available
- Fast acting brake mechanism
- Meets ANSI A10.32
- All applicable OSHA standards
- CSA certified



#10093353



**\$180.60**

## Pass-Thru Anchor Slings



- Heavy-duty 1-3/4" polyester webbing with forged alloy-steel hardware
- 3" wear pad protects primary webbing from cuts and abrasion
- 1 regular D-Ring
- 1 large D-Ring for pass-thru, wrap-around cinching



Part #	Size	Price
7336	3'	\$26.50
7372	6'	\$34.20
737210	10'	\$49.60
737214	14'	\$59.95



## Vertical Lifeline

- Double locking snap hook at one end this 5/8" 3-strand polyester rope
- Resistance to abrasion and UV light
- Exclusive steel thimble resists
- Meets the requirements of OSHA 1926 and ANSI Z359



Part #	Size	Price
L1364DB25	25'	\$46.75
L1364DB30	30'	\$58.95
L1364DB50	50'	\$72.75
L1364DB100	100'	\$104.00
L1364DB150	150'	\$151.75
L1364DB200	200'	\$188.00



## Workman® Mini PFL, 36CSN Swivel Snaphook



- Internal fast-acting pawl lock mechanism offers the most versatile, compact, self-retracting device on the market, allowing for increased user safety at lower heights
- Fall limiter design stops a fall quickly, providing workers with the ability to tie off at lower levels below the D-ring
- 6-ft. (1.8 m) length
- Rugged, impact resistant housing for increased product life
- External energy absorber provides visual load indicator for easy inspection



#10157859

#10157842

- Twin-leg carabiner connection keeps harness D-ring available for use with other equipment while climbing, or for rescue purposes

Part #	Size	Price
10157842	Single-Leg	\$146.55
10157859	Twin-Leg	\$253.35

## Molded Non-Woven Synthetic Fiber Disposable Half Masks

- Nose clip for adjustment
- Foam edge under nose clip
- DOLOMIA optional test for longer continuous wear time
- Rubber straps



- with high performance exhalation valve

Part #	Type	Size	Price
M1200E	Standard	20 PR/BX	\$13.85/bx
M1200V	w/Exhale Valve	10 PR/BX	\$13.20/bx

## N95 Disposable Particulate Respirator 8210

- Provides a minimum 95% filter efficiency against solid and non-oil based aerosol particulates
- Adjustable noseclip with foam strip to reduce the potential for eyewear fogging
- Staple-free headband attachments are comfortable in hot or cold conditions
- 20 Respirators per box



Part #	Size	Price
8210	Standard	\$16.99/bx
8110	Small	\$27.50/bx





## Howard Leight Max<sup>®</sup> Earplugs, NRR 33 dB

- Bell shaped for comfort
- Polyurethane foam
- Smooth, soil-resistant closed cell-foam skin prevents dirt build-up
- ANSI S3.19-1974 - Attenuation Test Protocol
- #MAX1USA is red, white and blue



**Honeywell**  
HOWARD  
LEIGHT

#MAX1USA

Part #	Type	Size	Price
MAX1	Uncorded	200 pr/bx	\$27.50/bx
MAX30	Corded	100 pr/bx	\$26.00/bx
MAX1USA	Uncorded	200 pr/bx	\$32.75/bx

## 3M<sup>™</sup> Peltor<sup>™</sup> X-Series Earmuffs



#X1P3E  
NRR 21 dB

- Protection against noise arising from a wide range of applications
- Lightweight, low-profile earcup design for improved compatibility with other PPE



#X1A  
NRR 22 dB

**\$15.15**

## 3M | PELTOR<sup>®</sup>

### 3M PELTOR Wireless Communication X Series Earmuff Accessory



- Resistant to harsh environmental elements
- Noise Canceling microphone
- Bluetooth

#WSCUSH

**\$69.95**

Accessory, combined with the X Series Earmuffs, can help keep you protected while allowing you to communicate in noisy environments. Take that important call without stepping away from your work. The Wireless Communication Accessory easily attaches to your existing 3M PELTOR X Series earmuffs





## Chill-Its®

NOTE: ALL COLORS NOT NECESSARILY AVAILABLE IN ALL STYLES.

### Chill-Its® Phase Change FR Premium Cooling Vest

- Modacrylic cotton blend FR fabric
- Fabric meets ASTM F1506 performance requirements (ATPV rating of 7.1 cal/cm2)



Part #	Size	Price
6215(size)	SMMD, LGXL	\$349.75
6215HV(size)	SMMD, LGXL	\$360.75

### Chill-Its® Charge Pack

- Maintains constant 64°F / 18°C
- Cooling lifecycle lasts up to 4 hours
- Honeycomb design for increased flexibility



Part #	Size	Price
6220(size)	SMMD, LGXL	\$274.85

### Chill-Its® Premium Hi-Viz Low Profile Hydration Pack

- 600D water-resistant rip stop polyester shell
- Insulated pack and tube keeps water cool
- Dual Cap bladder system
- Vented, padded shoulder straps
- Gear storage compartments
- Multiple d-rings



#5156

\$94.75

Part #	Color
5156BLK	Black
5156LIME	Hi-Viz Lime

### Chill-Its® Dry Evaporative Cooling Vest

- Provides immediate and long lasting cooling
- Up to 3 days of cooling ability
- Mesh side panels provide additional ventilation and stretch



#6685



\$150.00

Part #	Size
6685(size)	MD-XL
Available at additional cost: 2XL, 3XL	



# Chill-Its®

NOTE: ALL COLORS NOT NECESSARILY AVAILABLE IN ALL STYLES.

## Chill-Its® Evaporative Microfiber Cooling Towel

- Soft and absorbent
- Feels significantly cooler than ambient air
- Machine washable
- UPF 50 for protection against harmful UV rays



**\$11.25**

Part #	Color
6602MFBBLUE	Blue
6602MFGRAY	Gray
6602MFLIME	Lime
6602MFORANGE	Orange
6602MFPINK	Pink



## Chill-Its® Hard Hat Neck Shade with Cooling Towel



- Protects neck from harmful UV rays
- Hook-and-loop straps
- Remains hydrated up to 4 hours
- Reusable: just soak in water to reactivate



**\$12.95**

#6670CT



## Chill-Its® High-Performance Headbands

- Hi Cool® moisture management performance fabric
- Absorbent terrycloth
- Elasticized back for a great fit



**\$6.65**

Part #	Pattern Style
6605CAMO	Camo
6605BLUE	Solid Blue
6605STARSTRIPE	Stars & Stripes
6605LIME	Lime
6605FLAMES	Flames



## Chill-Its® Evaporative Triangle Hat

- With cooling towel
- Remains hydrated up to 4 hours
- Reusable: just soak in water to reactivate
- Perfect for wearing under hard hats
- Tie closure for perfect fit



**\$9.85**

Part #	Pattern Style
6710CTSS	Stars & Stripes
6710CTCAMO	Camo
6710CTREDW	Red (Western)
6710CTNAVYW	Navy (Western)
6710CTFLAMES	Flames
6710CTBLUE	Solid Blue
6710CTLIME	Lime







## Sqwincher® Fast Pack®

- Liquid Concentrate (Yields 6 oz.)
- 50 packs per box
- Sold by the box



**\$16.25/bx**

Part #	Flavor	Part #	Flavor
015300	Mixed Berry	015306	Iced Tea
015301	Cherry	015308	Lemon Lime
015302	Grape	015309	Tropical Cooler
015303	Lemonade	015310	Cool Citrus
015304	Orange	015500	Orange ZERO
015305	Fruit Punch	015501	Fruit Punch ZERO

## Sqwincher® Double Cooler



#400107

**\$123.75**

- 7 Gallon Cooler
- Center chamber holds 2 gallons of ice
- Outer chamber holds 5 gallons of beverage
- Two spouts: beverage spout and water from the ice chamber's spout



## Sqwincher® Ready-To-Drink

16 oz. Bottle

- No wait time, open and drink
- 12 per case



**\$30.25/cs**

Part #	Flavor
030500GR	Grape
030501OR	Orange
030502	Fruit Punch
030908	Lemon Lime

## Sqwincher® ZERO Powder Pack™

- Yields 2.5 Gallons
- Sugar free
- Calorie free



**\$4.75/pk**

Part #	Flavor
016800	Lemon Lime
016801	Orange
016802	Assorted
016803	Fruit Punch
016804	Grape
016805	Strawberry Lemonade

## Sqwincher® Disposable Conical Cups

- 4.5 oz

Part #	Count	Price
9346SL	200	\$6.30/bx
9346	5,000	\$110.00/cs





- Great tasting, scientifically formulated electrolyte replacement drink
- The natural recovery source for dehydration

## Squwincher® Liquid Concentrate

128 oz. Bottle

- Yields 10 Gallons

**\$14.75/bt**

Part #	Flavor
040202	Grape
040204	Orange
040205	Fruit Punch
040208	Lemon Lime

Also available in 5 and 2.5 gal. yields - and Squwincher ZERO Sugar/Calorie free



## Squwincher® QwikServ™

- Powder Mix (Yields 16.9 oz.)
- 96 packs per case
- Sold by the case

**\$70.00/cs**

Part #	Flavor
060900	Orange
060901	Fruit Punch
060902	Lemon Lime
060904	Grape



## Squwincher® Powder Pack™



**\$8.25/pk**

- Yields 5 Gallons

Part #	Flavor
016400	Mixed Berry
016401	Cherry
016402	Cool Citrus
016403	Lemonade
016404	Orange
016405	Fruit Punch
016406	Grape
016408	Lemon Lime
016409	Tropical Cooler

Also available in 2.5 and 1 gal. yields and Squwincher® Lite™ Low Calorie

## Squwincher® Squeeze Pops

- 3 oz. Freezer Pops
- 150 packs per case
- Sold by the case

**\$42.75/cs**



Part #	Flavor
159200201	Assorted
159200228	Fruit Punch ZERO
159200229	Tangerine ZERO
159200201PK	Assorted (10 pack)

**\$4.00/pk**





## Igloo® Heavy Duty Water Coolers

- “Drinking Water” imprint meets OSHA labeling requirements for water used on jobsites
- 5 and 10 gallon coolers maintain ice for 3 days at 90° F!



Part #	Capacity	Price
421	2 Gallon	\$31.50
431	3 Gallon	\$37.75
451	5 Gallon	\$45.00
4101	10 Gallon	\$68.00

## Coleman® Chest Cooler



- Holds up to 63 cans
- Fits upright 2-Liter bottles
- 48 Quart Capacity
- Rust-proof



#30154

\$123.75

## Yeti® Coolers

- Durable rotomolded construction, nearly indestructible
- PermaFrost™ Insulation in the walls and lid
- UV-resistant and nearly indestructible
- Durable handles with textured grips
- Molded-in tie-down slots and non-slip feet



### Tundra 45 Cooler

Part #	Color	Capacity	Price
YT45W	White	9.4 gal	\$349.99
YT45B	Blue	9.4 gal	\$349.99

### Tundra 65 Cooler

Part #	Color	Capacity	Price
YT65W	White	14.3 gal	\$399.99
YT65B	Blue	14.3 gal	\$399.99

### Tank 85 Cooler

Part #	Color	Capacity	Price
YTK85W	White	20.6 gal	\$249.99
YTK85B	Blue	20.6 gal	\$249.99
YTK85T	Tan	20.6 gal	\$249.99
YTK85LID	Lid for Tank 85 Cooler		\$49.99





## Sun X<sup>®</sup> SPF 30+ Broad Spectrum Sunscreen



- FDA compliant
- Contains aloe vera gel and Vitamin E
- Passed the Lineman's Glove Test (Type 1 Class 2 ANSI/ASTM D 120)
- FDA rated water resistant



#71690

#71666

#71662



#71440

Part #	Size	Price
71662	2 oz Tube	\$3.50
71666	4 oz Tube	\$4.50
71690	Lip Balm	\$1.60

- Dispenser boxes contain multi-purpose lotion pack with dry towelette foil pack

## Stokoderm<sup>®</sup> Sun Protect 30 PURE



- SPF30 Sunscreen, perfume-free and water resistant
- Contains Vitamin E to soothe and condition the skin
- Safe to be used by outdoor electricians wearing electrical insulating gloves
- 100 ml Tube

#SUN100ML

\$7.75



## Bee Bopper Wasp & Hornet Spray

- Sprays up to 20 feet
- Kills bees, wasps, and hornets
- 14 oz. can

#61011

\$4.85



Part #	Description	Price
71440	Clam Shell Dispenser, 25/Box	\$18.75/bx
91661	Wallmount Dispenser, 50/Box	\$34.20/bx

## BugX<sup>®</sup> 30 Insect Repellent with DEET - Spray Pump

- Water and sweat resistant
- EPA registered in all 50 states, Canada and Mexico

### Effective for 7+ hours of protection

- Mosquitoes
- Gnats
- Ticks
- Red bugs
- Chiggers
- No-see-ums
- Fleas
- Flies



Part #	Size	Price
12650	2 oz	\$4.20
12651	4 oz	\$7.50

Also available in Towelette Dispensers





## Medi-Lyte® Heat Stress Relief Tablets

Provides relief from:

- Heat stress
- Fatigue
- Muscle cramping



Part #	Quantity	Price
03033	50 Packets	\$4.75/bx
03013	250 Packets	\$19.75/bx

## Refresh® Single Use Eye Drops



- Lubricant eye drops
- Immediate relief of dryness and irritation
- 30 single use containers per box

#P23678

\$17.90/bx



## Fog Be Gone Lens Cleaning Towelettes

- Superior protection against fogging
- 5" x 8" individually wrapped towelettes
- 100 per box



#TW100DS

\$10.95/bx



## Type III First Aid Kits

- OSHA and ANSI/ISEA Z308.1-2015
- Partitioned, water-resistant plastic case
- Handle for easy carrying
- Wall-mountable

Part #	Size	Price
90753C	25 Person	\$31.60
90565C	50 Person	\$34.15

Order by Phone:  
**800.343.1354**  
7am - 5pm EST Monday - Friday.

Order by Web:  
**www.DiValSafety.com**  
24 Hours a Day. Every Day.

Order by E-Mail:  
**orders@divalsafety.com**  
24 Hours a Day. Every Day.

Order by Fax:  
**716.874.4686**  
24 Hours a Day. Every Day.

Order by Mail:  
**DiVal Safety Equipment, Inc.**  
1721 Niagara Street, Buffalo, New York 14207



## SHAX® Portable Tents

- 10' x 10'
- Silver coated canopy
- Convenient height adjustment between 10' - 14'
- Meets CPAI-84 flame resistance code
- Convenient wheel bag for easy storage and transport



### Standard Tent

- 210D polyester top with polyurethane coating
- Hammer tone steel frame
- Reinforced corners



#6010ERGODYNE

\$263.95

### Heavy Duty Tent

- Rugged 300D polyester shell with PU and UV treatments
- Double vented top for maximum air flow
- Heavy-duty ground stakes and ropes included
- Optional detachable side walls
- Reflective accents



#12900L

\$439.95



## SHAX® Lightweight Industrial Umbrella

- 7'6" diameter
- 300D polyester shell with PU and UV coatings
- Meets CPAI-84 flame resistance code
- Tilt mechanism for full sun protection
- Four different height options with peak height of 7'8"



#6100LIME



Part #	Description	Price
6100LIME	Umbrella	\$139.95
6190	Stand	\$199.45

#6190







## Rubbermaid Brute® Garbage Cans, Lids and Accessories



- All plastic, professional grade construction
- Reinforced rims add strength and durability
- Double ribbed base increases stability
- Certified to NSF standard #2 and standard #21

Part #	Description	Price
2632GR	32 Gal. Can, Gray	\$31.15
2631GR	Lid for 32 Gal. Can, Gray	\$7.85
RCP265788GRA	Dome Lid for 55 Gal. Can, Gray	\$144.80
2640BLA	Dolly, 350 lbs max weight cap.	\$53.75

## Husky Contractor Clean-Up Bags

- Selected as the strongest bag for yard clean up
- Tear and puncture resistant
- 42 gallon bags
- Size 33" x 48"



Part #	Packed	Price
PA3242HD	20 per case	\$16.99
HK42WC032B	32 per case	\$24.50

## Disposable Garbage Bags



- Plain without any printing or warning
- Ideal for general non-hazardous construction waste
- Size 32" x 47"
- 35 gallon capacity
- 3.5 mil thickness

Part #	Color	Packed	Price
3350BUP	Black	100 per roll	\$70.00/rl
3350CUP	Clear	100 per roll	\$85.00/rl
Other options (size, capacity, thickness) available			

## Dumpster Liners



- 6 mil thick
- Made in USA
- Strong heat seals
- Form-fitted design
- High-quality polyethylene

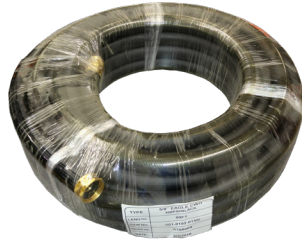
#LBH2343

Part #	Color	Price
3272	30 yard	\$46.50/ea
LBH2343	40 yard	\$79.00/ea



## Heavy Duty Contractor Water Hose

- 150 psi working pressure
- Crush resistant male/female hose couplings
- Engineered to stay flexible even in extreme temperatures
- 50' length



#0010102014

**\$44.00**

## Gilmour® Heavy-Duty Metal Hose Nozzle

- Solid brass valve stem with permanent adjusting nut
- Rust resistant
- Leak proof seal



#573

**\$4.95**

**Gilmour**

## Gilmour® Heavy-Duty Insulated Hose Nozzle

- Insulated molded vinyl comfort grip
- Solid brass valve stem with a permanent adjusting nut
- Rust resistant
- Leak proof seal



#593

**\$7.85**

**Gilmour**

## WeatherMaster® Durable All Weather Water Hose

- High kink resistance
- Easy on coupler and protective collar
- Green vinyl cover won't mar surfaces
- 5/8" inner diameter
- 50' total length



#SNWM58050

**\$13.50**



## WypAll® X60 Wipers

- Hydroknit absorbing technology
- Re-enforced for extra scrubbing and cleaning power
- Tough enough for big jobs -- soft enough for face and hands

#34015



#34790

#34865KC

Part #	Quantity	Size	Price
34015	180/BX	12.5" x 16.8"	\$20.35/bx
34790	1260/CS	9.1" x 16.8"	\$99.25/cs
34865KC	912/CS	12.5" x 12"	\$93.55/cs



### Crystal Simple Green® Industrial Cleaner / Degreaser

- All-purpose degreaser and cleaner
- Formulated for critical cleaning applications
- Fragrance-free
- Color-free



Part #	Container	Price
19128P	1 Gallon Bottle	\$15.75
19005P	5 Gallon Pail	\$78.50

### Weed and Bug Sprayer

- Two gallon economy sprayer
- Anti-clog filter
- Translucent bottle for ease in checking fluid level



#2502GI



\$22.90

### Chapin® SureSpray™ Deluxe Poly Sprayer

- One gallon deluxe sprayer
- Lock-on spray mode
- Spray shield extension
- Measuring cup for dry hand mixing
- Anti clog filter



#2501



\$37.10

### Justrite® Smoker's Cease Fire® Receptacles

- Innovative self-extinguishing design
- Safely collects unsightly cigarette butts and reduces the risk of fire
- Flame-retardant, sturdy polyethylene
- Won't rust, dent, or crack
- FM Global fire tested and approved



Part #	Color	Price
26800	Gray	\$56.00
26800B	Beige	\$56.00
26800D	Black	\$56.00





### Razor-Back® #2 Shovels



- Heavy duty, industrial gauge, steel blade with rolled step
- North American hard wood handle
- Limited Lifetime warranty

Part #	Blade	Handle	Price
43201	Round Point	30", D-Grip	\$18.75
45519	Round Point	48", Straight	\$18.75
43201	Square Point	30", D-Grip	\$18.75
45519	Square Point	48", Straight	\$18.75

### Union® #2 Shovels



- Good quality and designed for light to medium duty jobs
- North American hard wood handle
- 5 year warranty

Part #	Blade	Handle	Price
43106	Round Point	28", D-Grip	\$10.25
40191	Round Point	48", Straight	\$9.75
42106	Square Point	28", D-Grip	\$10.25
40184	Square Point	48", Straight	\$9.75



### Leaf Rake

- Sturdy construction
- 48" hardwood handle
- 23" width
- 5 year warranty



#64430

\$9.25



### Tine Bow Rake

- One piece forged head
- North American hardwood handle
- 25" width
- 15 Tine head
- 66" Handle
- Limited Lifetime warranty



#63141

\$21.50



### Aluminum Landscape Rake

- Lightweight and durable aluminum
- 36" rake head
- Rounded tines that prevent gouging of lawn surfaces
- Cushioned end grip
- 66" handle



#61036A

\$32.70





## Threaded Broom Handle

#5K

- Quality hardwood handle
- Heavy-duty threaded metal tip
- 60" length
- 15/16" diameter



#623

#5K

\$5.10

## Garage Broom

- 24" wide head
- Long lasting bristles
- Designed to remove the heavier dirt and debris
- Handle sold separately

#623

\$14.25



#M6TC

## Jackson® Total Control™ Wheelbarrow

- Total Control™ handles make dumping much easier
- 6 cubic foot seamless steel tray and undercarriage
- Patented "Clear" leg stabilizers

Part #	Tire	Handle	Price
M6TC	16" Regular Tire	Trigger	\$109.00
M6TCFF	16" Flat Free Tire	Swing	\$119.00

## Type I Steel Safety Cans

- 100% leakproof construction
- Stainless steel flame arrester stops flashback ignition
- Meets OSHA and NFPA requirements
- Certified by FM, UL and ULC
- Justrite Ten-Year Warranty



Part #	Capacity	Handle	Price
10301	1 Gallon	Trigger	\$43.80
10501	2 Gallons	Swing	\$37.35
10555	2-1/2 Gallons	Swing	\$40.10
10801	5 Gallons	Swing	\$41.00
10811*	5 Gallons	Swing	\$46.45
* Diesel Fuel Storage Can (Yellow)			
11200	Polypropylene Funnel		\$6.60

## True Temper® Wheelbarrow



#C6STSPFF

\$87.75

- 6 cubic foot capacity
- 16" sport flat-free tire, never needs air
- Tough steel handles with comfort grips
- Heavy-duty undercarriage

## NEW TOOL TETHERING SERVICE

Let DiVal Safety manage your tool tethering systems.

- Choosing the best safety solution to prevent dropped objects can be confusing.
- Let the DiVal certified technicians take care of ensuring that tools are safe and compliant.
- We can tether your tools from 1 lb. to 25+ lbs.



### ANSI/ISEA 121 Incidents of Dropped Object Prevention Standard:

Establishes minimum design, performance and labeling requirements for solutions that reduce dropped object incidents in industrial and occupational settings.



# Fall Protection Service

- Factory specifications using only factory supplied parts
- SRL block, harness & lanyard inspections and tests to insure compliance with OSHA and ANSI standards
- Serviced fall protection equipment restored to original compliance condition
- Factory trained and certified technicians



## Fall Protection Safety Training Class

- Fall Protection (regulatory) Requirements
- Anatomy of a Fall
- Fall Hazard: Prevention vs. Protection, Fall Protection Options
- Personal Fall Arrest Systems and ABC's of Fall Protection
- Inspection and Maintenance Requirements

# Safety Training Classes

- Asbestos, Silica & Lead
- Blood-borne Pathogens (BBP)
- Fall Protection
- First Aid/CPR/AED Training
- HAZWOPER
- Lockout/Tagout
- OSHA Globally Harmonized System (GHS)
- OSHA Standards Training
- Powered Industrial Truck (PIT) Forklift
- Respirator Fit-Testing & Protection
- Industrial Hygiene Services



## Compliance Services

- Accident investigations
- Custom training materials and videos
- On-site, off-site and online safety training
- Safety inspections
- Safety programs and campaigns
- Safety staffing (short & long term)
- Wall-to-wall OSHA compliance inspections
- JSA's (Job Safety Analysis)
- On-site testing (hearing & respiratory)
- Lockout/tagout procedure writing
- Respiratory fit testing (qualitative & quantitative)
- Industrial hygiene services
- Certified NSC trainers and CIH technicians



# Gas Detection Services

- Certified technicians
- Calibrations
- Gas detector checkups
- Meter and sensor serial number logging and tracking for future sensor expiration notifications
- On-site cal-plus program for fixed gas detectors
- Quick turnaround!



## Respiratory Cleaning & Repair Service

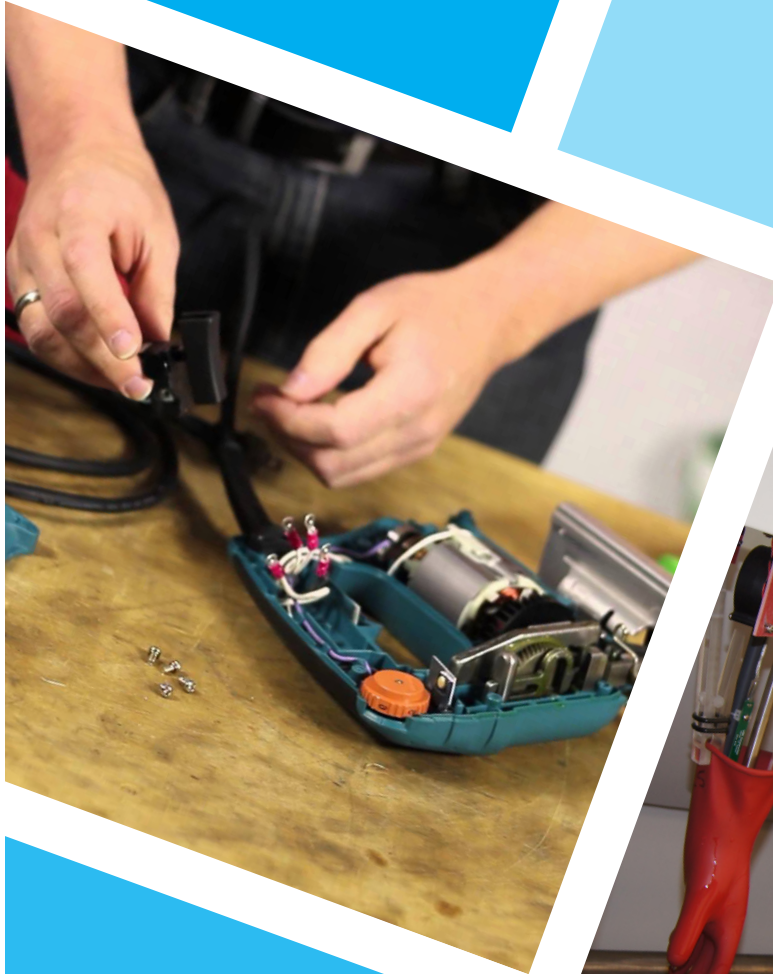
- Certified technicians
- Respirators ultrasonically cleaned
- Replacement of damaged, worn or missing parts
- Respirator returned in a sealed bag
- Brands we can test include, but are not limited to: Scott, MSA, North, 3M, Survivair, Draeger and Moldex





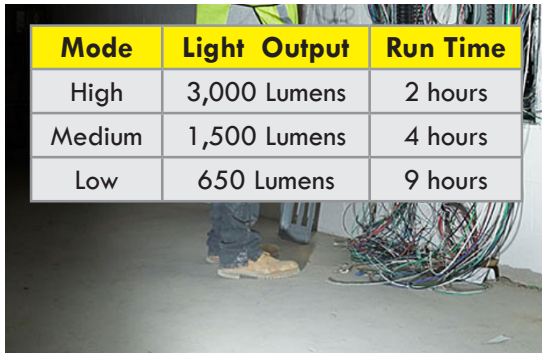
## Tool Repairs

- **Power tools:** electric and battery powered
- **Hydraulic tools:** crimpers, cutters, chainsaws, breaker hammers
- **Gas equipment:** generators, compressors, pressure washers, water pumps, trash pumps
- **Gas & powder actuated tools:** framing nailers, .25/.27 caliber powder actuated tools
- **Pneumatic tools:** staplers, nailers, rivet busters, pavement breakers



## Electric Glove Testing Service

- **Quick turn around service**
- **State-of-the-art testing lab**
- **Automatic testing notifications**
- **Equipment testing management program**
- **We service:** gloves & sleeves, blankets, hoods, line hose & covers, insulated jumpers, hot sticks & tools, and storage bags & accessories



## M18™ ROVER™ LED Dual Power Flood Light



- The industry's brightest 18V LED flood light
- Up to 20% brighter than 500W Halogen Flood Lights
- Head rotates 240° to direct light where it is needed
- 3 keyholes in its base for hanging in multiple orientations
- Durable roll cage design and impact-resistant lens and bezel
- 18 volt lithium battery (#48111840) sold separately

Mode	Light Output	Run Time
High	3,000 Lumens	2 hours
Medium	1,500 Lumens	4 hours
Low	650 Lumens	9 hours



Part #	Description	Price
236020	Flood Light Only	\$231.10
48111840	Battery Only	\$133.80

*LEDs never need to be replaced, and are backed by a limited lifetime warranty*



## M18™ Utility Bucket Light

- The industry's first utility bucket light
- Revolutionize the way power utility lineman work in a bucket
- Dual light head design that allows the user to spot and flood with one light
- Built for use in harsh conditions and environments



Mode	Run Time
Flood	4 hours
Spot/Flood	4 hours
Spot	6 hours

Part #	Description	Price
212220	Bucket Light Only	\$995.00
212221HD	Light Plus 1 Battery	\$1,295.00
212222HD	Light Plus 2 Batteries	\$1,495.00