

DiVAL+

Safety & Supplies for Life

Winter Catalog 2015 - 2016

Devoted to the safety of your employees and committed to the bottom line of our clients!



*DiVal Safety is an
Authorized Distributor of*





Order by Phone:
800.343.1354
7am - 5pm EST Monday - Friday.



Order by Fax:
716.874.4686
24 Hours a Day. Every Day.



Order by Web:
www.DiValSafety.com
24 Hours a Day. Every Day.



Order by E-Mail:
orders@divalsafety.com
24 Hours a Day. Every Day.



Order by Mail:
DiVal Safety Equipment, Inc.
1721 Niagara Street, Buffalo, New York 14207

Safety Outlet Store Locations

Buffalo Mon-Fri 7am-5pm ET
1701 Niagara St. Sat 8am-12pm ET

Rochester Mon-Fri 7am-5pm ET
845 West Ave.

Syracuse Mon-Fri 7am-5pm ET
6179 E. Molloy Rd.

Table of Contents

Pages

Ice Warning Lights	3
Caps	3,4,31
Helmet Liners / Face Masks	3-5,31-35
Cold Weather Gloves	6-11
Leather Gloves	8-9
PVC Coated Gloves	10
Glove Liners	11
Hand Warmers	11
Foot Warmers	11,16
Footwear	12-19
Footwear Covers & Accessories	18
Traction Devices	18-19
Rainwear	20-21,35
Carhartt Apparel	22-23,25
Cold Weather Workwear	22-28
Hi-Viz Workwear	26-28,31
Base Layer Thermals	29,33
Hand Sanitizer	30
FR Cold Weather Apparel	31-35
Heaters	36-37
Matting	38
Ice Scrapers	38
Shovels	39
Ice Melting	40

PAYMENT OPTIONS

We accept cash, check, charge, or account



Pricing in this catalog may be subject to change at any time.

DANGER STARTS WELL BEFORE ZERO //

Cold stress is just as dangerous as heat stress — but with its sneaky symptoms, it often goes undetected until it's too late. Awareness is key. Being informed about the dangers of cold stress and the importance of breathing warm air can help save lives and keep workers warm, comfortable, and productive.



FROST BITE

SYMPTOMS: PALE, WAXY-WHITE SKIN COLOR; SKIN BECOMES HARD AND NUMB; USUALLY AFFECTS EXTREMITIES INCLUDING EARS AND NOSE.

RESPONSE:

- Move the person to a warm dry area and remove any wet/tight clothing that may cut off blood circulation.
- DO NOT rub the affected area, rubbing can cause skin/tissue damage.
- Gently place the affected area in warm (105°F) water. Do not pour water directly on affected area. Warming will take 25-40 mins.
- Once normal feeling, movement and color return to area, dry and wrap to keep warm.
- Seek medical attention as soon as possible.

HYPOTHERMIA

SYMPTOMS: FATIGUE/DROWSINESS; UNCONTROLLED SHIVERING; COOL BLUISH SKIN; SLURRED SPEECH; CLUMSY MOVEMENTS; IRRITABLE/IRRATIONAL/CONFUSED BEHAVIOR.

RESPONSE:

- CALL FOR EMERGENCY HELP IMMEDIATELY.
- Move the person to a warm dry area and remove any wet/tight clothing and replace with dry clothing or wrap in a blanket.
- Drink warm, sweet drinks (sugar water or sports-type drinks). Avoid caffeinated drinks.
- Have the person move their arms and legs to create muscle heat. If unable to do so, place hot packs in armpits, groin, neck and head. DO NOT rub the person or place them in warm water.

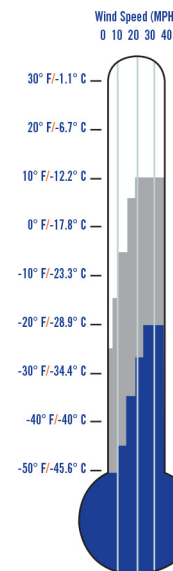
LOW TEMPERATURE + WIND SPEED + WETNESS = INJURIES & ILLNESS

- Little Danger (Caution) Freezing to Exposed Flesh within 1 hour:
- Danger Freezing to Exposed Flesh within 1 Minute:
- Extreme Danger Freezing to Exposed Flesh within 30 Seconds:

Source: OSHA; www.osha.gov

When the body is unable to warm itself, serious cold-related illnesses and injuries may occur, and permanent tissue damage and death may result.

Hypothermia can occur when land temperatures are above freezing or water temperatures are below 98.6°F/37°C. Cold-related illnesses can slowly overcome a person who has been chilled by low temperatures, brisk winds, or wet clothing.



© ERGODYNE. ALL RIGHTS RESERVED. ALL WRONGS REVERSED.

N-Ferno® Extreme Balaclava w/ Hot Rox™

- 2-piece, 320g fleece design provides excellent coverage of the face, neck and head
- Built-in heat exchanger provides warm air for inhalation in extreme conditions
- Form-fitting design prevents eyewear from fogging
- Hook-and-loop attachments
- Removable face mask
- One size fits most



Item #6970ERG **\$41.70**

Ice Alert LED Warning Light with 2' Stand

- Flashing blue light
- 360° visibility
- 12 super bright LED's with individual magnifying diffusers
- Water tight design
- Adjustable settings from 30°-70° F
- Over 400 flashing hours
- Over 1,000 feet visibility at night
- Thermostat enclosed in watertight flange base enclosure
- Ideal for parking lots, walkways, outside door entrances, and driveways

LUMASTROBE WARNING LIGHTS

- Anywhere water may collect and ice may develop causing dangerous road and walking conditions
- 2½ ft, 3 lb Guardian stand



Item #GUARDIANIA5

\$185.00

N-Ferno® Wind-Proof Hinged Balaclava

- Fleece with wind-protectant fabric at most vulnerable places protects against a variety of elements
- Unique hinged design
- 3-panel construction with flat lock stitching for a comfortable "made just for you" fit
- Reflective accents help keep workers safe and seen
- Long length



Item #6823 **\$13.20**

N-Ferno® Classic Trapper™ Hat

- Trimmed with faux fur and a thick, quilted satin crown lining, these hats are a snug barrier against wind and cold
- 60g of 3M™ Thinsulate™ insulation
- Quilted satin crown lining with PU backing
- Durable, wind and water-resistant nylon shell to keep you warm and dry
- Button flaps with side holes for hearing



Item #16845E **\$28.25**

Roskilde Neck Gaiter

- Made of 56% Merino wool and 44% polypropylene 230g filament yarns
- Does not absorb perspiration
- Extremely quick drying
- Lightweight and non-allergenic
- Insulates against cold weather
- Ideal for temperatures ranging from -4° to 32°F
- Single layer
- One size fits most



Item #79875 **\$24.00**

Roskilde Pro Balaclava

- Polypropylene on the inside and wool on the outside
- Wool reinforces insulation properties
- Medium weight and non-allergenic
- Extremely quick drying
- Insulates against cold weather
- Ideal for temperatures ranging from -4° to -32°F
- Versatile face opening for multiple configurations
- Breathable, stretchable, one size fits most



Item #79869BLK **\$40.00**

Roskilde Balaclava Full Face Mask

- Made of 57% Merino wool and 43% polypropylene 240g filament yarns
- Does not absorb perspiration
- Extremely quick drying
- Lightweight and non-allergenic
- Insulates against cold weather
- Ideal for temperatures ranging from -4° to 32°F
- Versatile face opening for multiple configurations
- One size fits most
- Available in black and navy



Item #75726BLK **\$28.00**
Item #75726NVY **\$28.00**

Lifa® Beanie

- Made of 100 % polypropylene 125g filament yarns
- Does not absorb perspiration
- Extremely quick drying
- Double layer
- Lifa® Stay Dry Technology™
- Lightweight and non-allergenic
- Available in black, navy, and olive



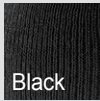
Item #79833(color) **\$16.00**

N-Ferno® Knit Cap

- 100% acrylic shell
- CoolMax™ lining
- Be Tenacious across the front
- Machine washable
- One size fits most



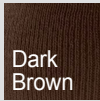
Item #6819BT **\$20.75**



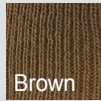
Black



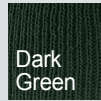
Coal/Heather



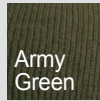
Dark Brown



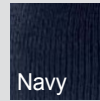
Brown



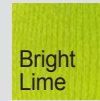
Dark Green



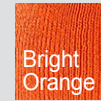
Army Green



Navy



Bright Lime



Bright Orange

• 100% acrylic, stretchable rib-knit fabric

• Carhartt logo sewn on the front

• One size fits all

carhartt 



Acrylic Knit Winter Hat

*Available in Black, Coal/Heather, Dark Brown, Brown, Dark Green, Army Green, Navy, Bright Lime, Bright Orange

Item #A18(color) \$8.99

carhartt 



Knit Hat With Visor

*Available in Black, Coal/Heather, Brown, Army Green, Navy

Item #A164(color) \$9.99

carhartt 



100g Insulated Face Mask

*Available in Black, Brown, Coal/Heather, Bright Lime, Bright Orange

Item #A161(color) \$12.99



Hi-Viz hats, masks are 98% Cotton / 2% Spandex

carhartt 

Fleece 2-in-1 Headwear

- Fleece hat with pull-down face mask for warmth
- Sweat wicking and anti-microbial finish
- 100% polyester hat
- 90% polyester/10% spandex face mask
- Mask can be tucked up into hat when not in use

Item #A202(color) \$12.99

*Available in Black, Moss, Dark Brown, Coal/Heather

Item #100795(color) \$12.99

*Lime, Orange

carhartt 

Force Helmet-Liner Face Mask

- 92% polyester/8% spandex with fleeced interior for added warmth
- Full-facial protection that extends below the neckline
- Face mask pulls down below the chin when not needed
- FastDry® technology wicks away sweat for comfort and fights odors
- Flat-seam construction enhances comfort

Item #A267(color) \$16.99

*Available in Black and Bright Orange



Our MyDesign Center Offers Custom Embroidery

Call To Place Your Order Today!



Heavyweight Acrylic Knit Cap

- Heavyweight 100% acrylic knit fabric
- Helps keep ears and head warm
- Cuffed style design
- One size fits most

*Available in Black, Heather Gray, Navy, Red, Flame Orange

Item #1501KC(color) \$3.85



Economical Winterliner

- Lightweight protection that can be worn under caps and hats
- Two string ties for comfortable, close fit
- Inner shell: napped flannel
- Meets 16 CFR 1610, Class 1

#PL20 **\$2.10**



JACKSON
SAFETY Brand

Mid-weight Fleece Liner

- Can be worn under caps and hats
- Hook-and-loop fastener for a comfortable, close fit
- Outer shell: cotton twill
- Lining: polyester fleece
- Thread: spun poly
- Meets 16 CFR 1610, Class 1

#PL50 **\$3.65**



Heavyweight Fleece Liner

- Can be worn under caps and hats
- Hook-and-loop fastener for a comfortable, close fit
- Outer shell: cotton twill
- Lining: polyester fleece
- Meets 16 CFR 1610, Class 1

#PL95 **\$5.20**



Sherpa Lined Winterliner

- Ideal for cold-weather environments
- Long nape for extra neck coverage from wind
- Outer shell: cotton twill
- Lining: polyester sherpa
- Meets 16 CFR 1610, Class 1

#PL94 **\$7.50**



Quilted Fleece Winterliner

- Can be worn under caps and hats
- Hook-and-loop fastener for a comfortable, close fit
- Water-resistant material
- Outer shell: quilted nylon with extra thick foam fill
- Lining: polyester fleece
- Meets 16 CFR 1610, Class 1

#PL40 **\$5.20**



Dielectric Deluxe Liner

- Ideal for extreme cold-weather environments
- Full head and neck coverage with extra-long nape and wraparound collar
- Shoulder length liner can be tucked into jacket
- Outer shell: cotton twill
- Lining: polyester sherpa
- Meets 16 CFR 1610, Class 1

#PL90 **\$10.40**



Heavyweight Fleece Liner

- Ideal for cold-weather environments
- Full head and neck coverage with extra-wide wrapped collar
- Shoulder length liner can be tucked into jacket
- Hook-and-loop fastener straps
- Outer shell: heavy-weight fleece
- Meets 16 CFR 1610, Class 1

#22383 **\$10.40**



FlashTex® Nomex® NPR Winterliner

- Provides protection from electrical arc energy exposure
- Outer shell: Retains FR protection throughout life of the product - 100% Nomex® IIIA (ATPV Outer - 96 cal/cm²)
- Inner shell: 100% Proban® cotton (ATPV Inner - 76 cal/cm²)
- Cotton chinstrap Leather/Nomex® tabs attach to hard hats
- HRC Level 4 Protection

#3005354 **\$21.45**

Balaclava Ski Mask

- Made in Sweden of Merino wool and polyamide blend
- Soft inner facing terry loops create a warm insulating layer
- Efficiently wicks moisture from the face
- Machine washable and warm dryer safe
- Versatile face opening for multiple configurations
- One size fits most, Green

Woolpower
OSTERSUND



- 400g/m² has elongated flaps for coverage below the neck

Item #991982 200g/m² **\$41.40**
Item #96549866 400g/m² **\$45.90**

Acrylic Knit Face Mask

- Tight fitting three hole design
- Helps protect from the cold and wind
- Great to wear for outdoor applications
- Full face and neck coverage
- Soft and lightweight
- Available in black and navy



Item #6280BLK **\$8.35**
Item #6280NVY **\$8.35**

Full Face Fleece Liner

- Full face helmet liner
- Made of 100% polyester anti-pilling super heavy weight fleece
- Mesh mouth/nose guard
- No insulated ear barrier
- Single layer
- One size fits most



Item #LF648 Navy **\$8.35**
Item #LF649 Camo **\$9.40**

ProFlex® Insulated WP Gauntlet Cuff Gloves

- 40g 3M™ Thinsulate™ insulation
- OutDry® waterproof, windproof breathable bonded membrane
- PVC-reinforced palm, fingers and saddle
- 500D nylon back and gauntlet cuff
- Gathered wrist and reinforced fingertips
- EVA knuckle pad with reflective dots
- Pull tab for easy on and off
- Terry thumb brow wipe



Item #1647(size) Size 2-6 (SM-XXL) **\$53.65/PR**

ProFlex® Insulated WP Elastic Cuff Gloves

- 40g 3M™ Thinsulate™ insulation
- Durable synthetic leather with PVC reinforced palm and fingers
- Water and windproof, breathable insert liner
- Breathable spandex back with foam knuckle pad
- Nylon/Spandex cuff with low-profile closure
- Terry thumb brow wipe



Item #1603(size) Size 2-6 (SM-XXL) **\$35.65/PR**

ProFlex® Insulated Hi-Viz Thermal Waterproof Gloves

- Hi-Viz, breathable stretch spandex back
- 3M™ reflective tape zones on back and wrist
- Durable synthetic leather palm and fingers
- 40g 3M™ Thinsulate™ lining
- Hipora® waterproof, windproof breathable insert liner
- Abrasion resistant, textured PVC on palm and fingers
- Breathable neoprene cuff with low-profile closure
- Terry thumb brow wipe



Item #876WP(size) SM-2XL **\$38.45/PR**

GGT5® Mud Grip® 4021x Gloves

- SuperFabric® brand material palm provides ISEA level 5 cut resistance and maintains the highest level of protection available in the industry
- Durable TP-X® palm reinforcement utilizes the highest-level of abrasion resistance while maintaining an oil-resistant grip
- Full Impact Exoskeleton™ with high-performance IR-X® smash guards provides greater impact protection than the leading competitor
- HexArmor Mud Grip® provides reliable grip in dry or light oil situations
- Exterior and interior seams implement a double stitched core-spun thread, adding further durability and longevity
- Reinforced index finger and thumb saddle extends glove life
- Breathable Airprene™ SlipFit® cuff secures fit and improves comfort
- Machine washable



Item #4021(size) SM-XL **\$44.30/PR**

Heavy Duty Insulated Waterproof Gloves

- Deer skin palm with G-Grip™ patches for max grip and wear
- Rhino-Tex™ synthetic leather
- Polyester fleece lining with waterproof membrane
- Heatrac® micro-fiber insulation for ultimate warmth and comfort
- Pull-strap closure at wrist
- Neoprene cuff with pull tab closure at forearm



Item #2990LOGO(size) MD-2XL **\$24.60/PR**

Heavy Duty Insulated Gloves

- Genuine goatskin palm with G-Grip™ patches for max grip and wear
- Hydroguard water resistant liner on the palm, fingers and sidewalls
- Heatrac® micro-fiber insulation for ultimate warmth and comfort
- Knit wrist cuffs
- Stitched with DiVal logo



Item #1962LOGO(size) MD-2XL **\$20.75/PR**

Microfoam Full Dipped Nitrile Gloves w/ Touch Capability

- Microfoam nitrile coating
- Micro capillaries channels oil from the surface of the glove
- Brushed loop out terry liner
- Excellent abrasion resistance
- Knit wrist cuff, machine washable, antibacterial, silicone free
- Touch screen material is embedded in fingertips, allowing for use with touch screens



Item #715WNFTFT(size) SM-2XL **\$7.95/PR**

Silver Series™ Hi-Viz Thermal Lined Gloves

- Hi-Viz wind and water resistant shell
- Reflectivz™ waterproof plated palm
- Slip free grip in all weather conditions
- Polyester knit wrist
- Reflective knuckle strap
- Sizes MD-2XL



Item #RWG800(size) **\$12.50/PR**

SHOWA® ATLAS® 451 Insulated Coated Gloves

- 10-gauge insulated seamless cotton thermal liner
- Natural rubber coated glove
- Rough textured finish grip for excellent wet and dry gripping
- Breathable
- Ergonomic design



Item #451(size)
Size SM-XL **\$3.60/PR**

NorthFlex-Cold Grip™ Insulated Gloves

- Blue nylon outer shell
- Insulated brushed synthetic inner shell liner
- Black PVC 3/4 dipped coating
- Coating provides some liquid protection
- Excellent wet and dry grip
- Retains flexibility in temps as low as -15° F
- Knit wrist
- Color coded sizes on overedge seam
- Launderable



Item #NF11HD(size#)
Size 8-11 (MD-XXL) **\$9.00/PR**

Tuff-Coat® Acrylic Hi-Viz Winter Gloves

- Medium weight, seamless knit, brushed acrylic shell liner
- Tuff-Coat natural rubber palm and fingertip coating with rough finish
- Good grip, cut, puncture and abrasion resistance without sacrificing dexterity
- ASTM F1790-97 ANSI cut level 2 protection



Honeywell

Item #400(size)
SM-2XL **\$3.50/PR**

SHOWA® 4545 Insulated Foam Nitrile Coated Gloves



- 3/4 over the knuckle foam nitrile coating
- Nitrile coating retains maximum flexibility in temperatures down to -15°F
- 7 gauge Acrylic fleece liner to keep the hand comfortably warm

- 15 gauge seamless nylon knit glove for high dexterity
- Rough grip texture for wet and dry gripping power
- Color coded cuff, making sorting easy after washing
- Certified to ANSI/ISEA 105-2005 standards for Cut Level 3 protection



Item #4545(size) MD-2XL **\$7.25/PR**

Ninja® Ice Insulated Double Layer Gloves

- HPT Technology coating foam sponge on 15 gauge nylon shell
- 7 gauge insulated acrylic terry interior liner provides warmth
- HPT polymer coating repels liquids while providing strong wet or dry grip
- Coating remains soft in temperatures as low as -58°F
- Treated in Actifresh to kill bacteria and promote freshness
- Knit wrist cuffs
- ANSI cut level 2 protection



Item #N9690(size) SM-2XL Palm Coat **\$7.85/PR**
Item #N9690FC(size) MD-2XL Full Coat **\$8.35/PR**
Item #N9690HVL(size) MD-2XL 3/4 Coat **\$8.10/PR**

PosiGrip® Touch Screen Fingertip PU Coated Nylon Gloves

- Hi-Viz nylon shell
- Polyurethane coating
- Enhanced tactile sensitivity
- High level of dexterity
- Knit wrist cuff, machine washable
- Conductive threads in fingertips for use with touch screens



Item #HVY713SUTS(size) SM - 2XL **\$3.10/PR**

NorthFlex Cold Grip Plus 5™ Hi-Viz Gloves

- Double layer construction provides a high-level cut-resistant outer shell and thermal inner
- Outer shell is a 15 gauge seamless knit, lightweight and thin for excellent dexterity
- Foamed PVC coating has excellent abrasion resistance and grip to help keep hands from slipping over surfaces in wet or dry environments
- ANSI cut level 4 and EN511 level 2 resistance to contact cold

- PVC coating extends over knuckles to help prevent liquid penetration as well as add protection from knuckle abrasions
- Brushed acrylic thermal interior is soft and provides extra cushion for palms of hand
- Gloves retain flexibility, even at low temperatures down to -15° F (-26° C)
- EN511 Level 0 permeability to water (Level 0 = water permeation after 30 minutes)



Item # NFD11HD(size) SM-2XL **\$11.05/PR**

Insulated Premium Grain Pigskin Leather Palm Gloves

- Positherm® lined gloves
- 3/4" reflective stripe on cuff and knuckles
- Reflective tape meets ANSI/ISEA 107-1999 Level 2
- Fluorescent yellow polyester back
- Rubberized safety cuff
- Wing thumb



Item #HVY5555 SM - 2XL **\$10.20/PR**

Insulated Premium Grain Pigskin Leather Palm Gloves

- 3M™ Thinsulate™ lined
- 3/4" reflective stripe on 2" hi-viz orange knuckle protection
- Reflective tape meets ANSI/ISEA 107-1999 Level 2
- Knit wrist helps keep unwanted dirt and debris out
- Fluorescent yellow polyester back



Item #HVY1555 SM - 2XL **\$10.80/PR**

Hi-Viz Grain Pigskin Leather Palm Thinsulate™ Lined Gloves

- 100g 3M™ Thinsulate™ lining
- Reflective tape meets ANSI/ISEA 107-1999 Level 2
- Knit wrist helps keep unwanted dirt and debris out
- 3/4" reflective stripe knuckle protection
- Fluorescent orange polyester back



While Supplies Last



Item #HVO1555(size) SM-XL **\$10.80/PR**

Deerskin Thinsulate™ Driving Gloves

- Grain deerskin leather driver gloves
- 100 gram 3M™ Thinsulate™ lining
- Keystone thumb allows better flexibility
- Shirred elastic wrist
- Supple deerskin leather is soft and warm



While Supplies Last

Item #1542T(size) MD-XL **\$18.35/PR**

Top Grain Cowhide Leather Driver Gloves

- Select grain cowhide leather
- Thermal lining
- Straight thumb
- Shirred elastic wrist
- Gunn cut
- Color coded hem for easy size identification



Item #1JL6133(size) SM-XL **\$7.30/PR**

Cowhide Pile Lined Leather Palm Work Gloves

- Warm, soft pile lining
- Leather fingertips and knuckle strap
- Striped canvas back
- Elastic at the wrist
- Wing thumb, pull tab
- 2½" rubberized safety cuff
- 72 pair per case



While Supplies Last

Item #5558P Large **\$4.95/PR**
Item #5558PXL X-Large **\$4.95/PR**

#9940KF



#9940KT



Pigskin Leather Driver Gloves

- Select grain pigskin leather
- Keystone thumb
- Shirred elastic wrist
- Color coded hem for easy size identification
- #9940KF features a red fleece lining
- #9940KT features a 120g Positherm® insulated lining

Item #9940KF(size) SM-2XL **\$8.25/PR**
Item #9940KT(size) SM-2XL **\$9.30/PR**

Premium Pigskin Thinsulate™ Lined Leather Palm Gloves

- 100g 3M™ Thinsulate™ lining
- Reinforced fingertips and knuckle strap
- Striped canvas back
- Wing thumb
- 2½" rubberized safety cuff
- Color coded cotton hem



Item #5555(size) SM-XL **\$6.55/PR**

Kinco® Hi-Viz Insulated Gloves

- Premium grain pigskin palm
- Safety hi-viz nylon fabric back
- Fully lined with HeatKeep® lining
- Pigskin dries soft after getting wet
- 3M™ Scotchlite™ reflective knuckles
- Available in safety orange and green
- Available in safety cuff or knit wrist
- AquaNOT!® waterproof lining also available

Item #	Sizes	Color	Cuff Style	Waterproof	
1938(size)	SM-XL	Orange	Safety Cuff	No	\$13.30/PR
1938KW(size)	SM-XL	Orange	Knit Wrist	No	\$13.50/PR
1938KWP(size)	SM-XL	Orange	Knit Wrist	Yes	\$14.10/PR
1939(size)	SM-XL	Green	Safety Cuff	No	\$12.80/PR
1939KW(size)	SM-XL	Green	Knit Wrist	No	\$13.05/PR
1939KWP(size)	SM-XL	Green	Knit Wrist	Yes	\$13.50/PR



Endura® Kevlar® Lined Waterstop™ Oilbloc™ Goatskin Leather Driver Gloves

- Soft, durable goatskin leather
- Excellent flexibility and very good dexterity
- Exceptional water and oil repellency
- Features 100g 3M™ Thinsulate™ lining
- Keystone thumb for greater comfort
- Reinforced with extra stitching
- Elasticized back for a snug fit
- Arc rating ATPV equals 21 cal/cm²
- ASTM ANSI Puncture Resistance Level 2
- Meets NFPA standards for HRC Level 2 protection
- Cut resistant Kevlar® lining meets ASTM standards for Cut Level 2 protection



Item #378GOBTKL(size) SM-2XL **\$23.95/PR**
Available at additional cost: 3XL

Kinco® Pigskin Insulated Gloves

- The original pigskin leather palm work glove!
- Premium grain pigskin palm
- Trademarked heavyweight fabric back and cuff
- Fully lined with HeatKeep® lining
- Pigskin dries soft after getting wet
- Wing thumb



Item #1927(size) SM-2XL **\$10.95/PR**
Item #1927KW(size) SM-2XL **\$11.45/PR**

Side Split Cowhide Leather Freezer Gloves

- Offers exceptional hand protection in cold weather environments
- 200g 3M™ Thinsulate™ lining offers high level of warmth
- Reinforced leather palm
- Knit wrist for secure comfortable fit
- Wing thumb
- X-Large



Item #1640XL **\$13.25/PR**

Kinco® Suede Pigskin Insulated Gloves

- Split pigskin palm
- Fully lined with HeatKeep® lining
- Pigskin dries soft after getting wet
- Wing thumb



Item #1926(size) LG-XL **\$9.90/PR**
Item #1926KW(size) LG-XL **\$9.95/PR**

Deerskin Suede Driver Gloves

- Premium deerskin
- High tensile strength with good insulation properties
- 3M™ Thinsulate™ lining
- Shirred elastic wrist
- Gunn cut, keystone thumb, and self hemmed
- 12 pair per bag



Item #1543T(size) MD, LG, XXL **\$15.40/PR**

Kinco® Grain Pigskin Insulated Gloves

- Premium grain pigskin palm
- Split suede pigskin leather back
- Fully lined with HeatKeep® lining
- Pigskin dries soft after getting wet
- Keystone thumb
- Snug knit wrist



Item #94HK(size) SM-XL **\$13.65/PR**



Insulated PVC Coated Work Gloves

- PVC exterior protects against chemicals, oils and greases
- Bright orange PVC coating, smooth finish
- #1007OR and #1017OR have jersey lining

Item #1007OR	Knit Wrist	\$4.10 /PR
Item #1017OR	Safety Cuff	\$4.70 /PR
Item #1027OR	12" Straight Cuff	\$6.55 /PR

SHOWA® ATLAS® TEM • RES 282 Insulated PU Coated Gloves

- Insulated acrylic liner retains warmth in cold conditions
- Form-fitting design for maximum dexterity
- Micro-ventilated polyurethane coating
- TEM•RES advanced technology keeps hands warm, dry and well-protected in cold climates for optimal comfort and performance
- Waterproof ergonomic design creates an impenetrable barrier against water and liquids
- Breathable membrane reduces perspiration for maximum comfort
- Extreme flexibility, Seamless knit construction
- Excellent wet and dry grip for precise handling



Item #282(size) MD-2XL **\$16.50**/PR



SHOWA® 477 Insulated Foam Grip Gloves

- Insulated acrylic terry liner provides a protective barrier from cold environments
- Dual nitrile coating technology provides optimal grip and longevity
- Dual coating protects against liquids and water penetration
- Highly flexible, resistant to abrasion and tearing
- Superior foam grip
- Seamless knit construction



- Available in sizes MD-2XL

Item #477(size) **\$13.95**/PR



Double Layer Neoprene Gloves

- 14" Neoprene, heavyweight, multi-purpose chemical resistance glove
- Excellent knitted thermal protection, due to double-knit cotton
- Good grip on wet or slippery objects
- Pebbled exterior finish
- Can withstand brief contact at temperatures of -100° F to 480° F
- Available in sizes 8-10



Item #NL56(size#) **\$26.00**/PR



Polar Alaskan Seamless WP Insulated Gloves

- Seamless waterproof glove
- PVC textured shell
- Removable, washable liner
- Basic chemical resistance



Item #174483 **\$31.00**/PR



Monkey Grip® Heavy Duty Vinyl Coated Thermal Gloves

- 12" length
- Tough fully coated PVC vinyl coating provides oil and grease repellency
- Foam insulation keeps hands warm, dry and protected from abrasions
- Cotton jersey lining
- Remains flexible at low temperatures
- Excellent grip
- Wing thumb
- ANSI Cut Level 2 protection

Item #23173	LG, Safety Cuff, Raised Finish	\$9.75 /PR
Item #23191	LG, Knit Wrist, Smooth Finish	\$8.60 /PR
Item #23193	XL, Safety Cuff, Smooth Finish	\$11.35 /PR

SHOWA® ATLAS® 460 Insulated PVC Coated Gloves

- Insulated with a soft warm seamless yellow acrylic liner
- Fully-coated double-dipped PVC coating for oil and chemical resistance
- Rough finish surface provides tactile feel and better grip
- Impermeable for working in damp or greasy environments
- Built to stay flexible down to -4°F
- Extended forearm protection
- Oil and chemical resistant
- Liquid proof



Item #460(size) SM-XL **\$15.40**/PR

Kastrup Thermal Glove Liner

- Made of 100% polypropylene 130g filament yarns
- Does not absorb perspiration
- Extremely quick drying
- Lightweight and non-allergenic
- Ideal for temperatures ranging from 14°F to 50°F
- Great for cold weather and general purpose applications
- One size fits most



Item #79691 \$18.00/EA

Therm-A-Knit® Insulator Gloves

- Thermolite® fabric delivers warmth against cold or damp conditions, even when wet
- Fast-wicking fibers act as hand warmers
- Machine washable
- Can be used as a liner under gloves
- 12 pair per pack
- Available in white or blue



Ansell

Item #THERM White **\$3.40/PR**
Item #THERMBL Blue **\$3.60/PR**

Thermastat® Thermal Glove Liner

- 13 gauge, lightweight machine knit shell
- Thermastat® hollow core polyester fibers
- Thermax material provides superior warmth and insulation
- Knit wrist
- Machine washable
- One size fits most
- 12 pair per bag



Item #FBC3730 \$2.85/PR



String Knit Glove Liners

- White natural string knit
- A cool and comfortable layer of protection ideal for use as a glove liner
- Overcast edging, color-coded hem
- 12 pair per bag, 40 bags per case
- #104L 7-cut cotton/polyester blend
- #708SC 7-cut 100% cotton



Item #104L \$0.50/PR
Item #708SC \$0.75/PR

Honeywell

Seamless Knit Gloves

- Standard weight cotton/polyester blend
- Seamless knit construction with 4" extended thermal cuff
- Eliminates seams which may cause irritation due to rubbing or chafing
- Cotton is comfortable and naturally wicks away perspiration
- Polyester helps to reinforce fiber strength for longer wear after repeated



Item #WK18A \$1.95/PR

Knit Glove Liner

- 7 gauge, heavy-duty 100% cotton
- Seamless knit construction
- Excellent breathability
- Great for wearing under electrical insulating glove as liner
- One size fit most
- 4" cuff



Item #145149 \$1.90/PR

100% Cotton Jersey Liner Gloves

- Fleece lining
- Slip on for easy on and off
- Gunn cut
- Great for general duty and light abrasion applications



Item #755 \$1.75/PR



Grabber Hand, Foot & Toe Warmers

- Warmers are widely used for portable, long-lasting heat therapy
- Perfect everyday solution for cold hands and feet
- Designed to function in the low oxygen environment
- Provides soothing warmth
- 1 Time disposable use

Item #173967 Hand Warmers (7 hours) **\$1.15/PR**
Item #MWES Hand Warmers (12 hours) **\$1.30/EA**
Item #TWES Toe Warmers (6 hours) **\$1.60/PR**
Item #FWMES Foot Warmers (5 hours) **\$3.10/PR**

N-Ferno® Full Foot Warming Packs

- To activate, just open the pack
- All natural ingredients heat up when they contact oxygen
- Seal from oxygen in Zip-Loc bag and reuse the next day
- Foot style warms up to 7 hours



Item #6995 \$2.50/PR



Muck Chore 16", Steel Toe

- EH Rated Outsoles
- Slip & Oil Resistant
- Waterproof
- 5mm CR flex-foam bootie, 4-way stretch nylon
- Hand-layered 100% waterproof construction
- Breathable air-mesh lining wicks away humidity and perspiration
- Removable EVA sock liner
- Diamond-textured toe and heel guards to resist scuffs and scratches
- Kick off lugs
- Meets ASTM F2413-11 M I/75 C/75 EH

Item #CHS-000A(size)
MED: 5-14 **\$135.10**



Muck ARCTIC SPORT Insulated, 16", Steel Toe

- EH Rated Outsoles
- Slip & Oil Resistant
- Waterproof
- Insulated
- Designed for extreme weather conditions
- 5mm CR flex-foam bootie, 4-way stretch nylon
- 100% waterproof construction
- Fleece lined and 2mm thermal foam underlay added to the instep
- Wrap around bumper toe cap
- EVA molded midsole and contoured footbed
- MS-1 molded outsole
- Meets ASTM F2413-11 M I/75 C/75 EH

Item #ASPSTL(size)
MED: 7-14 **\$199.50**



Muck ARCTIC Pro Insulated, 16", Steel Toe

- EH Rated Outsoles
- Slip & Oil Resistant
- Waterproof
- Insulated
- Designed for extreme weather conditions
- 8mm CR flex-foam bootie, 4-way stretch nylon
- 100% waterproof construction
- Fleece lined and 2mm thermal foam underlay added to the instep
- Wrap around bumper toe cap
- EVA molded midsole and contoured footbed
- Bob-tracker molded outsole
- Meets ASTM F2413-11 M I/75 C/75 EH

Item #ACPSTL0(size)
MED: 7-14 **\$204.95**



Muck Chore Soft Toe

- EH Rated Outsoles
- Slip & Oil Resistant
- Waterproof
- Stretch-fit topline binding snugs calf to keep warmth in and cold out
- 5mm Neoprene bootie, 4-way stretch nylon
- 100% waterproof construction
- Durable, lightweight rubber outsole
- Upper is triple reinforced in the toe area and quadruple reinforced in the heel area
- Steel shank for additional arch support
- EVA molded midsole and contoured footbed
- Quick-clean rubber overlay
- Meets ASTM F2413-11 M I/75 C/75 EH

MED: 5-16
#CHM000A(size) 12" \$116.00
#CHH000A(size) 16" \$121.50



#CPCT000 - Full Rubber Coating



Muck Chore Cool, 16", Steel Toe

- EH Rated Outsoles
- Slip & Oil Resistant
- Waterproof
- Insulated
- 4mm Neoprene bootie, 4-way stretch nylon
- 100% waterproof construction
- Upper is triple reinforced in the toe area and quadruple reinforced in the heel area
- Steel shank for additional arch support
- etc® sockliner lining to reduce friction and heat build up
- Spandura® added to the exterior of the neoprene for added protection
- Meets ASTM-F2413-11 M I/75 C/75 EH

MED: 5-14
Item #CSCT000(size) \$145.00
Item #CPCT000(size) \$155.00



Muck Chore META w/ Met-Guard, 16", Steel Toe

- EH Rated Outsoles
- Slip & Oil Resistant
- Waterproof
- Insulated
- Maximum protection and comfort
- 5mm CR flex-foam bootie, 4-way stretch nylon
- 100% waterproof construction
- XRD® metatarsal guard is soft and flexible, but becomes rigid when struck
- Steel shank for additional arch support
- Upper is triple reinforced in the toe area and quadruple reinforced in the heel area
- Durable, lightweight, rubber outsole with self-cleaning channels for optimal slip-resistance
- Meets ASTM F2413-11 M I/75 C/75 Mt/75 EH

MED: 5-14 **Item #CHSMETA(size) \$159.00**



NEOS Explorer™ 11” Overshoe STABILicers

- Rugged 500 denier nylon upper with waterproof membrane
- 2.5mm polyurethane internal bootie
- 4mm polyurethane foam insulation
- Cleat wrench included in top inside pouch
- 32 steel hardened cleats
- Optional 10mm removable EVA insole adds comfort (sold separately)

Item #EXSG(size)
 Sizes: SM-3XL **\$136.00**



NEOS Voyager™ 11” Overshoe STABILicers

- Rugged 500 denier nylon upper with waterproof membrane
- 100% waterproof
- Adjustable hook-and-loop closure
- Snowshoe compatible
- Cleat wrench included in top inside pouch
- 32 steel hardened cleats

Item #VNS1BLK(size)
 Sizes: XS-2XL **\$97.60**



NEOS Navigator 5™ 15” Overshoe STABILicers

- 840 woven polyester fabric upper
- 100% waterproof
- Adjustable hook-and-loop closure
- Windproof and 4mm PU foam insulation
- Cleat wrench included in top inside pouch
- Expandable gaiter increase high to 20”
- 32 steel hardened cleats

Item #N5P3S(size)
 Sizes: XS-3XL **\$132.05**



NEOS Voyager™ 11” Overshoe STABILicers

- Security heel provides added safety
- Rugged 500 denier nylon upper with waterproof membrane
- Extra large gusset provides easy on/off
- Adjustable hook-and-loop closure
- Cleat wrench included in top inside pouch
- 32 steel hardened cleats

Item #VNS1HEEL(size)
 Sizes: XS-2XL **\$103.50**



NEOS Voyager™ Overshoe, 11”

- Rugged 500 denier nylon upper with waterproof membrane
- 100% waterproof
- Adjustable hook-and-loop velcro closure
- Snowshoe compatible
- NEOS perma outsole

Item #VNN1BLK(size)
 Sizes: SM-3XL **\$83.10**



NEOS Navigator 5™ Overshoe, 15”

- 840 woven polyester fabric upper with waterproof membrane
- 100% waterproof
- Adjustable hook-and-loop velcro closure
- Aggressive Vibram® Ninja™ outsole
- Expandable gaiter increase height to 20”
- Snowshoe compatible

Item #N5P3(size)
 Sizes: XS-2XL **\$117.20**

+ Men's 8" Insulated Work Boots



Timberland PRO® Boondock WP 8" Composite Toe

- Electrical Hazard
- Slip & Oil Resistant
- Waterproof
- Insulated
- Premium WP leather with WP membrane
- Dynamic anti-fatigue technology
- Mesh lining with antimicrobial treatment
- Fiberglass shank for structural support
- 600g of Thermolite® insulation
- Cold formula (TPU) outsole

MED: 7-12,13,14,15 WIDE: 7-12,13,14,15

Item #89628(size) \$215.00



Timberland PRO® Endurance 8" Steel Toe

- Electrical Hazard
- Slip & Oil Resistant
- Waterproof
- Insulated
- Premium WP leather with WP membrane
- Contoured single-density open-cell polyurethane footbed
- Anti-fatigue technology with PU midsole
- 200/400g efficient zone insulation
- Metallic puncture-resistant plate

MED: 7-12,13,14,15 WIDE: 7-12,13,14,15

Item #95567(size) \$175.00



Timberland PRO® WP 8" Steel Toe

- Electrical Hazard
- Slip & Oil Resistant
- Waterproof
- Insulated
- Seam-sealed waterproof leather uppers
- Mesh lining with antimicrobial treatment
- Open-cell polyurethane footbed
- Nylon shock-diffusion plate for support
- 400g of Thermolite® insulation
- Timberland PRO® rubber outsole

MED: 7-12,13,14,15 WIDE: 7-12,13,14,15

Item #26002(size) \$145.00



Wolverine DuraShocks® 8" Steel Toe

- Electrical Hazard
- Slip & Oil Resistant
- Waterproof
- Insulated
- Waterproof Wolverine® leather upper
- Full cushion removable footbed with Axidyne® polymer
- Seam sealed waterproofing
- 400g 3M™ Thinsulate™
- Fiberglass shank



MED: 7-12,13,14,15 WIDE: 7-12,13

Item #3176(size) \$165.00



Wolverine Novack WP 8" Composite Toe

- Electrical Hazard
- Slip & Oil Resistant
- Waterproof
- Insulated
- Waterproof full grain leather
- 1000 Denier nylon upper
- Compression molded EVA footbed
- Wave mesh lining
- 1000g 3M™ Thinsulate™
- Goodyear welt construction

MED: 7-12,13,14 EW: 7-12,13

Item #30121(size) \$140.00



Carolina Gaucho WP 8" Composite Toe

- Electrical Hazard
- Slip & Oil Resistant
- Waterproof
- Insulated
- Waterproof crazy horse leather upper
- Removable AG7™ polyurethane footbed
- EVA midsole, pillow Cushion™ insole
- Non-metallic shank
- 600g 3M™ Thinsulate™
- Cement construction

D: 8-12,13,14 EE: 8-12,13,14

Item #CA8521(size) \$145.00



Timberland PRO® Boon-dock WP 6" Composite Toe

- Electrical Hazard
- Slip & Oil Resistant
- Waterproof
- Insulated
- Premium WP leather with WP membrane
- Dual-density dynamic anti-fatigue technology
- Ever-Guard™ leather heel
- Fiberglass shank for structural support
- Flame-laminated Thermolite® 400g insulation
- Molded Timberland PRO® toe protector

MED: 7-12,13,14,15 WIDE: 7-12,13,14,15

Item #92641(size) \$185.00



Wolverine DuraShocks® WP 6" Steel Toe

- Electrical Hazard
- Slip & Oil Resistant
- Waterproof
- Insulated
- Waterproof Wolverine® leather upper
- Full cushion removable footbed with Axidyne® polymer
- Seam sealed waterproofing
- 400g 3M™ Thinsulate™
- Fiberglass shank



MED: 7-12,13,14 WIDE: 7-12,13

Item #3177(size) \$155.00



Timberland PRO® WP 6" Steel Toe

- Electrical Hazard
- Slip & Oil Resistant
- Waterproof
- Insulated
- Seam-sealed waterproof leather uppers
- Mesh lining with antimicrobial treatment
- Open-cell polyurethane footbed
- Nylon shock-diffusion plate for support
- 200g of Thermolite® insulation
- Timberland PRO® rubber outsole

MED: 7-12,13,14,15 WIDE: 7-12,13,14,15

Item #65016(size) \$135.00



Timberland PRO® Women's WP 8" Alloy Toe

- Electrical Hazard
- Slip & Oil Resistant
- Waterproof
- Insulated
- Premium WP leather with WP membrane
- Mesh lining with antimicrobial treatment
- Contoured single-density open-cell polyurethane footbed
- Fiberglass shank for structural support
- 200/400g zoned insulation

MED: 5.5-10 WIDE: 5.5-10

Item #88116(size) \$145.00



Ranger® Apun WP, 11", Soft Toe

- Waterproof
- Slip & Oil Resistant
- Insulated
- Stitch line waterproof leather uppers
- TPR shell with stabilization ring
- Steel shank for structural support
- 3/4" removable foam liner with 200g of Thermolite® insulation
- Molded ClawMax outsole

MED: 7-14

Item #A485(size) \$71.95



Ranger® Double Insulated, 10", Steel Toe

- Waterproof
- Slip & Oil Resistant
- Insulated
- Rugged leather uppers
- 3/4" felt midsole
- Built-in double-insulating foam for added warmth in cold conditions
- Steel shank for structural support

MED: 7-14

Item #A422(size) \$123.25

ThermaCELL® (Original) Rechargeable Heated Insoles Foot Warmers

- Designed to keep your feet warm, not hot, to avoid having your feet sweat and freeze. They are not intended to get "hot" to the touch like disposable/ chemical foot warming pads. Rather, they will keep your feet comfortable and around normal body temperature.
- Rechargeable foot warmer is operated by a wireless remote control while the foot warmer is inside your shoes or boots
- Uses high-tech wireless thermal technology—no wires, extension cords, Velcro® straps, or battery strap brackets, and no batteries mounted to the ankle, shoe, or waist
- Charge lasts up to 5 hours of constant use (on medium heat setting)
- Powered by rechargeable, built-in lithium-ion polymer batteries embedded in the insoles
- Adjustable to three temperature settings to warm cold feet by remote control: no heat, medium heat (100° F), and high heat (111° F)
- Can be recharged at least 500 times, recharges in 4 hours or less
- Remote control operates Heated Insoles and fits into a pocket or attaches to a belt
- Water resistant and easily fits into your shoes or boots
- Tested by SATRA, worldwide leader in footwear testing, research, and development
- Package includes: 2 Heated Insoles equipped with integrated rechargeable lithium-ion polymer batteries; 1 remote control with battery; 1 lanyard; 1 drawstring travel bag; 1 global charger; 1 instruction booklet

ThermaCELL
Heated Insoles
WIRELESS & RECHARGEABLE



Car Charger

- Charges ThermaCELL (Original) rechargeable heated insoles in 4 hours or less
- Charge lasts up to 5 hours of use
- Easy and convenient way to charge your insoles on the go
- Charges both heated insoles at once, from your car
- Green LED indicator light comes on when charge is complete
- Input: 12/24 VDC



Sizing Chart for Both Insoles

SM:	M: 3.5-5	W: 4.5-6
MD:	M: 5.5-7	W: 6.5-8
LG:	M: 7.5-9	W: 8.5-10
XL:	M: 9.5-11	W: 10.5-12
2XL:	M: 11.5-13	W: 12.5-14

Item #THS01(size) SM-2XL
Item #THSCC1 Car Charger

\$129.95/PR
\$19.95/EA



ThermaCELL® ProFLEX Rechargeable Heated Insoles Foot Warmers

- Same great features as Original Insoles, but with the added ability to swap out battery packs to extend the heat as needed
- Wireless, Remote controlled – fingertip control of heat without removing your footwear
- 3 heat settings: no heat, medium heat (100° F) and high heat (111° F)
- 2 Rechargeable, removable batteries included
- Battery charges in 4 hours using wall charger or any USB port
- Charge lasts up to 5 hours
- Batteries are easy to change without removing insole from boot or shoe

Extra Replacement Battery Packs

- Includes 2 rechargeable lithium-ion polymer batteries, 1 USB cable, 1 wall charger, and 1 smart charging case
- Batteries fit ThermaCELL Heated Insoles ProFLEX (only)
- Charge lasts up to 5 hours of use
- Batteries charge in 4 hours or less
- Use wall charger (included with ThermaCELL Heated Insoles ProFLEX) or any USB port to charge
- Wall charger can be a carrying case for batteries

HW20(size) SM-2XL **\$179.95/PR**
HW20XB Battery Pack **\$39.95/EA**

ThermaCELL® Rechargeable Heat Packs

- Thin and lightweight, can be used multiple places on the body to keep you warm all winter long
- Last up to 6 hours of constant heat per charge and charges in 4 hours or less
- Three temperature settings reaching up to 116°F
- Shock-resistant, water-resistant, and transferable between pockets, jackets, pants, gloves
- Simply charge your ThermaCELL Heat Packs via Micro USB between uses to keep it ready for the next time you need to take control of the cold
- Package contains: Warmers equipped with integrated rechargeable Lithium-Ion Polymer battery, one USB wall charger, USB cord(s) and an instruction booklet
- 2 sizes available



Item #PAKS 2 Small Hand Warmers
Item #PAKL 1 Large Pocket Warmer

\$79.95/PK
\$69.95/PK

ThermaCELL
Heat Packs
RECHARGEABLE • LIGHTWEIGHT • ADJUSTABLE HEAT

TINGLEY
A TRADITION SINCE 1899

Winter-Tuff® Ice Traction Rubber Overshoe

- Seamless Injection molded construction
- 100% waterproof
- 46 carbide-tipped studs
- Stays flexible in cold temperatures
- Excellent stretch and tear resistance
- Abrasion resistant sole
- Tough, durable and affordable
- Easy On/Off

Item #1350(size) \$47.70
Item #1450(size) \$56.80

#1350



Item #	Fits Boot	Fits Shoe
1350SM	Sz 6½-8	Sz 6½-9½
1350MDT	Sz 8-9½	Sz 9½-11
1350LGT	Sz 9½-11	Sz 11-12½
1350XLT	Sz 11-12½	Sz 12½-14
1350XXL	Sz 12½-14	Sz 14-15½
1350XXXL	Sz 14-15½	Sz 15½-17

#1450



Item #	Fits Boot	Fits Shoe
1450SM	Sz 5-6½	Sz 6½-8
1450MD	Sz 6½-8	Sz 8-9½
1450LGT	Sz 8-9½	Sz 9½-11
1450XLT	Sz 9½-11	Sz 11-12½
1450XXLT	Sz 11-12½	Sz 12½-14
1450XXXLT	Sz 12½-14	Sz 14-15½

TINGLEY
A TRADITION SINCE 1899

Tingley Rubber Overshoe Boots

- 100% waterproof
- Injection molded seamless construction
- Reinforced heel and toe
- Sizes: SM-3XL
- Deep cleated outsole
- Will not crack or stiffen, easy cleaning
- Heavy duty heel kick-off

Item #1300(size) \$19.15
Item #1400(size) \$29.95

#1300
(Hi Top)



SM: 6½-8
MD: 8-9½
LG: 9½-11
XL: 11-12½
2XL: 12½-14
3XL: 14-15½

#1400
(10" Boot)



Servus PVC 12" Overshoe

- Dual compounding stretchable uppers
- 100% waterproof
- Wide grip outsole with knobby treads
- Reinforced design at critical stress points
- Easy tab and button closures
- Seamless molded construction
- SM: 6-8, MD: 9-10, LG: 11-13, XL: 14-15

Item #11001(size) \$22.50

SERVUS
by Honeywell



SM: 6-8
MD: 9-10
LG: 11-13
XL: 14-15

RANGER
by Honeywell

#55205



#55202



Ranger® Rubber Overshoe

- 100% waterproof
- Premium grade ozone resistant rubber
- Fabric lining
- Rugged ribbed outsole
- Sturdy buckle fasteners
- Easy On/Off

MED: 8-16

Item #55205(size) 5 Bkls \$38.05
Item #55202(size) 2 Bkls \$38.05

LACROSSE
ESTABLISHED 1897



LaCrosse ZXT 5 Buckle Deep Heel 14" Overshoe

- 100% waterproof
- ZXT high tensile strength premium abrasion resistant rubber
- 3M™ Scotchlite™ reflective material
- Easy On/Off
- Heavy-duty, non-corrosive metal buckles
- Flexibility in cold conditions
- Hex-tread outsole for superior traction

Item #00267140(size) MED: 8-16 \$68.35

LACROSSE
ESTABLISHED 1897



LaCrosse ATS Carbide Stud 12" Overshoe

- Ozone-resistant, abrasion-resistant ZXT high tensile strength rubber
- 100% waterproof
- 3M™ Scotchlite™ reflective material
- Will fit over deep heel leather footwear
- 4 Non-corrosive steel buckles
- Industrial strength tungsten carbide studs

Item #229108(size) 6-18 \$101.60

DiVal Over-The-Shoe 17" Slush Boot

- 100% Waterproof
- Light and heavy duty applications
- Cross rib outer sole
- Netted lining
- Netted lining
- Adjustable side straps
- Medium width
- Sizes 7-18

Item #9085(size) **\$19.70**



DiVal+
Safety & Supplies for Life

DuPont™ Tyvek® FC Slip Resistant Boot Covers

DuPont™ Tyvek® protective fabric with a skid resistant friction coating. Used exclusively for shoe and boot covers and skid-resistant booties in select Tyvek® coveralls. Protects against light liquid splash and dry particulates.

- Flash spun high density polyethylene
- Non-skid bottom
- Elastic top
- Serged seams

Item #4500

Shoe Covers 5" High, 200 per case

Item #FC454SGY

Boot Covers 18" High, 100 per case



DuPont™
Tyvek®

\$124.00/CS

\$105.75/CS

Anti-Slip SURE STEP 18" Boot Covers

- Anti-slip SURE STEP sole
- Elasticated at ankle and top of overboot
- White with blue sole
- Good for asbestos related work, handling powders, general maintenance, construction and light spray

Item #MGBLSSXL **\$191.70/CS**

Fits: 8-12, 200 Qty./Case

Item #MGBLSSXXL **\$220.85/CS**

Fits: 12-14, 150 Qty./Case

MICROCHEM
by AlphaTec™



MicroMax® Shoe & Boot Covers

- Economical, general purpose shoe covers provide microporous protection from dirt, grease, grime and light chemical splash
- Great for environments where hazardous or nonhazardous contaminants may be present



- MicroMax® NS is strong, wet or dry
- Vinyl sole for great abrasion resistance on #CTL904 & #CTL905

- Elastic top
- Serged seams
- 200 pairs per case

#CTL903XXL 2XL 17" Boot Cover **\$141.00/CS**

#CTL904(size) SM-XL 5" Shoe Cover **\$205.00/CS**

#CTL905LG LG 17" Boot Cover **\$225.00/CS**

Lakeland

ICEtrekkers® Winter Traction

ICEtrekkers
Walk, work & play on snow & ice.

- Diamond grips provide aggressive traction
- Effective when transitioning through gravel, rock, and mud
- Made of case hardened steel alloy
- Strung on steel aircraft cable

- Patented diamond-shaped beads provide hundreds of biting edges that grip in all directions
- Rubber sling remains elastic in subzero temperatures
- Diamond grips are self clearing



#06004IT M:5-6 #06006IT M:9½-12½
#06005 M:6½-9 #06007 M:13+

Item #0600(size) **\$43.70/PR**

100% Polypropylene Non Skid Shoe Covers

- 100% Polypropylene shoe covers
- Blue with tread white bottom
- Offers elastic opening that provides a snug fit around the ankle and the white non-skid sole gives added traction

- Latex Free
- Easily fits over shoes
- 6" tall
- 150 pair per dispenser case



Item #SCNWI

LG (13")

\$38.05/CS

Item #SCNWIXL

XL (15")

\$38.05/CS

Item #SCNWIXXL

2XL (16.5")

\$39.10/CS

DiVal Disposable Latex 12" Boot Covers

- Stretchable, seamless boot cover
- 100% Waterproof
- Reusable
- Economical for single use
- Ribbed textured sole
- 50 pairs per case

Item #24009002(size) SM-3XL

\$5.55

DiVal+
Safety & Supplies for Life



Heavy-Duty 5 mil Boot & Shoe Covers w/ Ties

- Clear heavy-duty 5 mil polyethylene boot and shoe covers with ties
- Easily slip over shoes and boots with a height of 18"
- 50 per dispenser box
- 10 boxes per case

- Ties at top of shoe cover provide added protection from dry particulates and light liquid splash
- Can also be used between overshoe boots and work boots



Item #B300

\$12.80/BX

YakTrax® Boot & Shoe Scrubber

- Removes excess dirt and debris from all types of boots and shoes
- Made of steel and plastic

- Mount boot scrubber onto any flat surface and scrub
- Perfect for mud room, deck or garage

YAKTRAX®
WINTER TRACTION FOR ALL YOU DO



Item #08401

\$25.95

STABLicer™ Best In Class Ice Cleats



- Flexible sole provides comfort and traction
- 34 case-hardened cleats bite into ice and snow
- Replaceable cleats reassure durability
- Straps fit snugly with Easy On/Off design
- Proprietary sole design and rubber compound enhances overall adhesive friction
- SM: 6-7½, MD: 8-10, LG: 10½-12, XL: 12½-14, 2XL: 15-16



Item #STAB(size) SM-2XL **\$46.40/PR**

STABILicers™ Lite Non-Slip Ice Cleats



- Full foot slip protection with heel and forefoot cleats maintains traction throughout your natural stride while walking
- Lightweight TPE elastomer holds STABILicers walk securely in place
- SM: 4-7, MD: 7½-10, LG: 10½-13, XL: 13½-16
- Traction tread outsole and cleats simultaneously contact walking surface, providing superior grip on ice, snow, and pavement
- Multi-directional, heat-treated steel plates bite into ice and snow



COLORS



Item #SWALK(color)(size) SM-XL **\$19.99/PR**

TREX™ Ice Traction Device



- 8 rugged, heat-treated carbon steel studs for tenacious grip and stability
- Stretchable rubber for fit and easy on/off
- Flexible to -40°F (-40°C)
- #6301 – replacement studs sold separately
- MD: 5-8, LG: 8-11, XL: 11-14, 2XL: 14-16



Item #6300(size) **\$15.40/PR**

TREX™ Ice Traction Device



- 12 rugged, heat-treated carbon steel studs for tenacious grip and stability
- Stretchable rubber construction
- SM: 5-7, MD: 7-9, LG: 9-11, XL: 11-14
- Contoured "step in" 3D design that easily wraps boots and shoes for a superior fit
- Flexible to -40°F (-40°C)
- #6301 – replacement studs sold separately



Item #6304(size) **\$18.10/PR**

TREX™ Spike Ice Traction Device



- Durable stainless steel aggressive chain and spike system offers tenacious grip and stability on ice and snow
- Innovative heel spike plate design provides enhanced traction on uneven surfaces
- Hi-viz orange stretchable rubber ring ensures a secure fit and maintains flexibility to -40°F (-40°C)
- SM: 5-7, MD: 7-9, LG: 9-11, XL: 11-14



Item #6320(size) **\$38.50/PR**

Yaktrax® Walk Winter Traction



- Walk naturally on snow or ice
- Spikeless, ultra lightweight design
- 360° of traction with patented skid lock coil system
- Abrasion resistant 1.2mm steel coils

Sizes:

#08006XS M:1-4½ #08003MD M:9-11
#08001SM M:5-8½ #08005LG M:11+

Item #0800(size) **\$21.90/PR**



Yaktrax® Pro Winter Traction



- Spikeless, ultra lightweight design
- 360° of traction with patented skid lock coil
- Durable natural rubber outerband
- SM: 5-8½, MD: 9-11, LG: 11½-13½, XL: 14+
- Abrasion resistant 1.4mm steel coils
- Removable strap
- Heel tab for Easy On/Off
- Shaped coil

Item #YAKP(size) SM-XL **\$31.25/PR**



Winter-Tuff® Ice Traction Spikes



- High stretch rubber stays strong and flexible in cold temperature
- Carbon steel studs grip ice and snow surfaces
- Fits a variety of footwear styles for both men and women
- Easy On/Off
- Pull over existing footwear
- Fits either foot - no need to distinguish left from right



Item #1150T(size) MD-2XL **\$15.40/PR**

TREX™ Adjustable Ice Traction Device



- 10 rugged, heat-treated carbon steel studs for tenacious grip and stability
- Adjustable cord cinches tight for a secure fit
- Stretchable rubber for fit and easy on/off
- MD: 5-8, LG: 8-11, XL: 11-14
- Aggressive tread connects mid-foot and heel stud zones
- Reflective accent
- Flexible to -40°F (-40°C)
- #6301 – replacement studs sold separately



Item #6310(size) **\$18.90/PR**

TREX™ Strap-On Heel Ice Traction Device



- Corrosion-resistant steel heel plate provides tenacious grip and stability on ice and snow
- Heel-only design leaves mid-foot free for unobstructed vehicle operation
- Will not retain ice, snow or debris
- Rugged webbing/hook-and-loop strap provides a secure fit
- Rear reflective accents enhance worker conspicuity



Item #6315MDLG 5-11 **\$15.40/PR**

Item #6315XL 11-16 **\$15.40/PR**



Luminator™ Class 3 Reflective Rain Coat

- .35mm PVC on polyester coat
- Detachable drawstring hood
- 2" Lime/Silver reflective stripes
- Cape ventilated back with underarm air vents
- Storm fly front
- 2 patch pockets, take up snaps at the wrists
- 49" Long
- Meets or exceeds ANSI/ISEA Class 3 High Visibility Standard



Item #201CL3(size) SM-XL **\$61.75**
Available at additional cost: 2XL-3XL

Luminator™ Reflective Rain Coat

- .35mm PVC on polyester coat
- Detachable drawstring hood
- 2" Lime/Silver reflective stripes
- Cape ventilated back with underarm air vents
- Take up snaps at the wrists
- Storm fly front
- 49" Long
- 2 patch pockets



Item #201CR(size) MD-XL **\$38.55**
Available at additional cost: 2XL-4XL

DuraScrim™ PVC Flame Resistant Rain Suit

- This DuraScrim™ double coated PVC on polyester suit offers durability at an economical price
- Extremely high tear strength is the result of an open weave polyester scrim fabric sandwiched between two layers of flame resistant PVC coating
- Therm-O-Rad sealed seam construction is great for chemical splash and waterproof protection
- Thicker outside coating for better abrasion resistance, with a lighter interior coating to protect fabric from chemical contamination
- Flame resistant tested. Self extinguishing with flameout and afterglow less than two seconds after removal of ignition source and char length less than 6 inches. (Test method ASTM D6413).



Item #J56107(size) SM-XL Jacket w/ Hood **\$12.75/EA**
Item #J56207(size) SM-XL Jacket **\$11.75/EA**
Item #056007(size) SM-XL Overalls **\$10.50/EA**
 Available at additional cost: 2XL-3XL

Jackson Safety* I

Class 3 Bomber Jacket V

Meets ANSI/ISEA Z107-2004 Class 3 standards. Machine washable. Rain pants available separately.



While Supplies Last

Item #18517LG	Large	Orange	\$65.00
Item #18523XL	X-Large	Orange	\$65.00
Item #18559XXXL	3X-Large	Orange	\$69.00
Item #18560LG	Large	Lime	\$65.00
Item #18561XXL	2X-Large	Lime	\$69.00

Hi-Viz Rain Gear

Rain Jackets

Polyester outer shell provides a waterproof and tear resistant outer shell with a flip over snap closure and one inside pocket. Unlined interior with a stow away hood inside collar. Snap closure on storm flap. Seams throughout with 360 degree visibility of beaded silver reflective tape. Meets Class 3 standards. Machine washable. Rain pants available separately.



While Supplies Last

Jackets

Item #20302LG	Large	\$42.00
Item #20303XL	X-Large	\$42.00
Item #20304XXL	2X-Large	\$42.00
Item #20305XXXL	3X-Large	\$42.00

Rain Pants

Polyester outer shell provides a waterproof and tear resistant outer shell with outside front pockets with a degree visibility of beaded silver reflective tape. Meets Class 3 standards. Machine washable. Rain jackets available separately.

Hi-Viz All Weather Gear

All-Weather Jacket

ANSI Class 3 convertible parka may be zippered in or out with drawstring collar. Insulated patch pockets with 360 degrees of beaded silver reflective tape. Fleece lining. Two exterior pockets with storm flaps. Meets ANSI/ISEA Z107-2004 Class 3 standards. Machine washable. Rain pants available separately.



While Supplies Last

Jackets

Item #18419XL	X-Large	\$55.00
Item #18515XXL	2X-Large	\$58.00

All-Weather Pants

Waterproof polyester with PU coating and beaded silver reflective tape. Storm flap on front pockets. Bottom side zipper for easy on/off. Meets ANSI/ISEA Z107-2004 Class 3 standards. Machine washable. Rain jackets available separately.

Hi-Viz Safety Apparel

With Removable Sleeves

Class 3 with sleeves and converts to meet ANSI/ISEA Z107-2004 standard. Full length zipper travels all the way up the extended collar for full protection. System Jacket for additional warmth and versatile style. 360 degrees of beaded silver reflective tape. Machine washable. Fleece Lining. Two side pockets with zippers.

Features:

- Class 3 Hi-Viz winter coat
- Detachable sleeves
- Waterproof material
- Meets ANSI 107-2004 standard
- Hi-Viz Orange or Lime



Sleeves Detach!

Breathable system. Features two outside front pockets with derm vents for added circulation and cooling. Convenient sleeve cuff closes the space around the hands. Welded beaded silver reflective tape. Meets ANSI/ISEA Z107-2004 standard. Order separately.

Provides a waterproof and breathable system. Features two flip over snap closure. Welded seams throughout with 360 degree silver reflective tape. Meets ANSI/ISEA Z107-2004 Class 3 standard. Combined with Class 2 or Class 3 work jackets (sold separately).



Pants

- | | | |
|------------------------|----------|----------------|
| Item #20311LG | Large | \$22.55 |
| Item #20312XL | X-Large | \$22.55 |
| Item #20313XXL | 2X-Large | \$22.55 |
| Item #20314XXXL | 3X-Large | \$22.55 |

Side for additional protection and warmth. Features a snap-closure with flaps. Elastic cuffs with adjustable closure. Welded beaded silver reflective tape. Waterproof polyester with PU coating. Cuffs that snap shut and one internal chest pocket. Meets ANSI/ISEA Z107-2004 standard. All weather pants sold separately.

Waterproof coating. Welded seams throughout with 360 degrees of silver reflective tape. Two exterior side pockets and one back pocket that features a quick release clip and a zipper fly. Fleece lined storm flap for coverage over boots. Meets ANSI/ISEA Z107-2004 Class 3 standard. Combined with Class 2 or Class 3 work jacket, (sold separately).



Pants

- | | | |
|------------------------|----------|----------------|
| Item #18602LG | Large | \$35.00 |
| Item #18422XL | X-Large | \$35.00 |
| Item #18603XXL | 2X-Large | \$38.00 |
| Item #18604XXXL | 3X-Large | \$41.00 |

PVC Polyester Raincoat, 48"



- This rain coat is perfect for light to medium duty applications
- .35mm PVC over polyester construction featuring a vented cape back with storm flap for wide range of motion
- Detachable hood
- Two outside pockets with flaps help to protect valuables
- Snap front closures with storm flap to keep the elements out
- Corduroy collar for added comfort
- 24 per case



Item #200C(size) \$15.10

Size SM-XL

Available at additional cost: 2XL-5XL

GloWear® Class E Thermal Pants



- Weatherproof outer shell constructed of 100% polyester
- Breathable PU coating
- 80g 3M™ Thinsulate™ lining
- 3M™ Scotchlite™ Reflective Material, 2" Level 2 ANSI-compliant
- Elastic waistband with drawstring
- Zippered leg openings for easy on/off



Item #8925(size) \$60.00

SM-5XL

Helly Hansen Rain Gear RealTree™ Camouflage



Roan Anorak Camouflage RealTree™ Raincoat

- Polypropylene coated on knitted polyester
- Hood made for helmets, with draw-cord and Velcro® adjustment on top
- Neoprene wrist cuffs
- Chest pocket with snap closure
- Draw-cord adjustment at hem
- Waterproof



Item #70206RT(size) SM-2XL \$112.00

Available at additional cost: 3XL-4XL

Camouflage RealTree™ Waist Pants

- MicroWeld™ waterproof seam construction
- Elastic waist band with draw-cord
- Double layer Impertech™, edge stitched and welded on seat and knees
- 13" zipper and snap adjustment at hem



Item #70448RT(size) SM-2XL \$90.00

Available at additional cost: 3XL-4XL



Weathered Canvas Shirt Jac

carhartt

- 9 oz 100% cotton washed canvas
- 4 oz 100% cotton flannel lining
- Garment washed for soft finish
- Triple stitched main seams
- Antique-finish brass snaps throughout
- 2 chest pockets with rivet reinforcements and 1 interior pocket
- Bi-swing back for range of movement



Flannel Lining

Item #100590001(size) SM-2XL Black **\$59.99**

Item #100590039(size) SM-2XL Gravel **\$59.99**

Available at additional cost: 3XL



Quick Duck® Jefferson Traditional Jacket carhartt

- 8.5 oz 60% cotton/40% polyester canvas
- Rain Defender® durable water-repellent finish
- Nylon lining quilted to 80-gram 3M™ Thinsulate™
- Inner-sleeve, rib-knit storm cuffs with angled openings
- Triple stitched main seams
- 2 chest pockets with flaps and snap closure, 2 large lower front pockets 2 inside pockets and left chest inner pocket with media port
- Bi-swing back for range of movement

Item #101492001(size) SM-2XL Black **\$119.99**

Item #101492908(size) SM-2XL Brown **\$119.99**

Available at additional cost: 3XL



Shoreline WP Rain Jacket carhartt

- 7.3 oz 100% nylon oxford shell
- Fully taped waterproof seams
- Snap-on/detachable visored hood with draw-cord adjuster
- Angled cuff openings
- Left-chest map pocket with waterproof zipper closure and 2 front lower pockets
- Storm Defender® waterproof breathable

Item #J162BLK(size) SM-2XL Black **\$119.99**

Item #J162OL(size) SM-2XL Olive **\$119.99**

Available at additional cost: 3XL, 4XL



Thermal Lined Duck Active Jac carhartt

- 12 oz heavyweight firm-hand, 100% ring-spun cotton duck
- 100% polyester thermal lining
- Attached thermal-lined hood
- Rib-knit cuffs and waist work to keep out the cold
- Main seams are triple-stitched
- Made in the USA

Item #J131BLK(size) SM-2XL Black **\$69.99**

Item #J131BRN(size) SM-2XL Brown **\$69.99**

Available at additional cost: 3XL-5XL & Tall's



Traditional Arctic Quilt Lined Duck Jacket carhartt

- 12 oz heavyweight firm-hand, 100% ring-spun cotton duck
- Nylon lining quilted to arctic-weight polyester insulation
- Corduroy-trimmed collar with under-collar snaps for optional hood
- 2 lower front and 2 inside pockets
- Inner-sleeve, rib-knit storm cuffs
- Brass center-front zipper plus storm flap with hook-and-loop closure

Item #J002BLK(size) SM-2XL Black **\$84.99**

Item #J002BRN(size) SM-2XL Brown **\$84.99**

Available at additional cost: 3XL & Tall's



#K124



#K121



#K122

carhartt 

Carhartt® Sweatshirts

- 10.5 oz, 50% cotton/50% polyester blend; Charcoal is 55% cotton/45% polyester; Heather Gray is 70% cotton/30% polyester
- Stretchable, spandex-reinforced rib-knit cuffs and waistband
- Carhartt-strong triple-stitched main seams
- Carhartt label sewn on lower front
- #K121 and #K122 feature Attached three-piece hood with draw-cord closure and front hand warmer pocket(s)

#K124(size) MD-2XL Crewneck Available in Black, Heather Gray, Navy **\$29.99**

#K121(size) MD-2XL Pullover Hoodie Available in Black, Heather Gray, Navy, Charcoal, Olive, Dark Brown **\$34.99**

#K122(size) MD-2XL Full Zip Hoodie Available in Black, Heather Gray, Navy, Charcoal, Olive, Dark Brown **\$39.99**
Available at additional cost 3XL, 4XL

Quilted Flannel Lined Jacket

- 12 oz heavyweight, firm-hand, 100% ring-spun cotton duck
- Quilted-flannel lining in body, quilted-nylon lining in sleeves
- Attached hood
- Made in the USA
- 2 outer and 2 inner pockets



carhartt 

#J140BLK(size) SM-2XL Black **\$79.99**
#J140BRN(size) SM-2XL Brown **\$79.99**
#J140DNY(size) SM-2XL Navy **\$79.99**

Available at additional cost: 3XL-4XL & Tall's

Traditional Arctic Quilt Lined Duck Coat

- 12 oz, 100% ring-spun cotton duck
- Nylon quilted lining to arctic-weight polyester insulation
- Corduroy-trimmed collar
- Snaps for optional hood
- 2 way brass zipper with hook-and-loop storm flap
- 4 outer and 2 inner pockets
- Inner-sleeve, rib-knit storm cuffs

carhartt 



#C003BLK(size) MD-2XL Black **\$99.99**
#C003BRN(size) MD-2XL Brown **\$99.99**
#C003DNY(size) MD-2XL Navy **\$99.99**

Available at additional cost: 3XL-4XL & Tall's

Carhartt® Realtree Xtra® Camo Active Jac

- 12 oz 100% cotton duck with Realtree Xtra® camouflage pattern
- Polyester thermal lining
- Attached thermal-lined hood with draw-cord closure
- 2 inside pockets
- 2 large lower front pockets
- Rib-knit cuffs and waistband
- Triple-stitched main seams



carhartt 

#J220977(size) SM-2XL **\$84.99**
Available at additional cost: 3XL

Crowley Hooded Jacket

- 13.7 oz 90% polyester/10% spandex with 95% polyester/6% spandex backing
- Rain Defender® durable water-repellent finish
- Draw-cord adjustable hood
- Full front zipper closure with chin protector
- 4-way stretch, Rugged-Flex™ durable technology
- Triple stitched main seams
- Adjustable draw-cord bottom hem



carhartt 

#101300001(size) SM-2XL **\$119.99**

Extremes® Arctic Quilt Lined Winter Coat

- Water-repellent, 1000-denier Cordura® nylon shell
- Nylon lining quilted to arctic-weight polyester insulation
- Under-collar snaps for optional hood
- 2 chest, 2 lower front and 2 inside pockets
- Inner-sleeve, rib-knit storm cuffs
- Pleated bi-swing back enhances movement



carhartt 

#C14BLK(size) SM-2XL **\$119.99**
Available at add'l cost: 3XL-5XL & Tall

DIVAL
MyDesign Center



Our MyDesign Center Offers Custom Embroidery

Call To Place Your Order Today!

Berne® Deluxe Insulated Bib Overalls



- Heavy-duty 100% cotton duck
- Medium-weight insulation quilted to 100% polyester taffeta liner
- Brass leg zipper with snap closure at hand opening
- Water repellent finish
- Triple-needle stitched main seams
- Insulated "High Back" design for added warmth
- Four-needle stitching on waistband with elastic inserts
- Two reinforced hip pockets, left with brass zipper
- Side utility pockets and hammer loop
- Reinforced knees
- Brass two-way front zipper
- Adjustable elasticized bib straps
- Two swing pockets
- Adjustable leg snaps
- Double inside chest pockets
- Heavy-duty nylon protects leg hem from wear



Item #B415BLK(size) SM-2XL Black **\$67.25**
Item #B415BD(size) MD-2XL Brown **\$67.25**
 Available at additional cost: 3XL-6XL

Weyburn Reflective Nylon Work Stormsuit



- Beaver nylon outer shell 240g with 13mm thermal pile lining
- 3M™ Scotchlite™ reflective material striping
- PU coated Oxford nylon reinforcement in high wear areas
- YKK 2-way, heavy duty front zipper with full outer storm flap
- Knit inner storm cuffs at wrists for heat retention
- Action shoulder pleat for full torso movement
- Detachable hood
- Front chest pocket with flap
- 1 inside storage pocket
- 1 large back pocket
- Snap adjustments on legs



Item #76632NVY(size) XL-4XL **\$141.70**

Berne® Deluxe Style Insulated Coveralls



- Black and brown heavy-duty 100% cotton duck
- 7.5 oz fabric - 55% cotton 45% polyester perm-press twill (navy - 65% polyester and 35% cotton duck)
- Medium-weight insulation quilted to 100% polyester taffeta liner
- Triple-needle stitched main seams
- Pleated bi-swing action back for extra comfort
- Two-way brass front zipper
- Reinforced bartacks at all stress points
- Snap closure at neck opening
- Four-needle stitching on waistband with elastic inserts
- 2 reinforced hip pockets, brass zip on left side
- Heavy-duty nylon protects leg hem from wear
- Three inside pockets, right with zipper closure
- Tape measure loop and hammer loop
- Pencil pocket on left sleeve
- Edge-stitched convertible collar with snaps for optional hood
- Pleated elbows
- Hemmed sleeves with hidden knit storm cuffs
- Outside storm flap
- Side utility pockets
- Reinforced knees (duck only)
- Water repellent finish



Item #I417BLK(size) SM-2XL Black **\$74.00**
Item #I417BD(size) SM-2XL Brown **\$74.00**
Item #I417NVR(size) SM-2XL Navy **\$74.00**
 Available at additional cost: 3XL-6XL

Lightweight Twill Insulated Coveralls



- 7.25 oz twill fabric - 65% polyester 35% cotton blend
- 100% polyester insulation
- One-piece top stitched collar with a two-way brass front zipper closure
- Adjustable leg bottoms and side vent openings
- Two set-in front pockets
- Two zippered breast pockets
- Two patch hip pockets
- One-piece ruler/plier pocket
- One utility pocket on sleeve
- Ideal to wear when working in colder environments



Item #CT30NV SM-XL **\$59.75**
 Available at additional cost: 2XL-4XL

Berne® Original Washed Insulated Bib Overalls

- Super-duty 12 oz 100% cotton duck
- Heavyweight quilt lined 100% polyester taffeta
- Full-length heavy-duty brass leg zipper
- Triple-needle stitched main seams
- Insulated "High Back" design
- Reinforced bartacks at all stress points
- Double inside chest pockets
- Brass two-way front zipper
- Zippered left hip pocket
- Side utility pockets and hammer loop
- Adjustable elasticized straps
- Outside storm flaps
- Reinforced knees
- Heavy-duty nylon hem



Item #B377BB(size) SM-2XL Bark Brown **\$70.50**
Item #B377OD(size) SM-2XL Olive **\$70.50**
Item #B377MGN(size) SM-2XL Moss Green **\$70.50**
 Available at additional cost: 3XL-6XL



Carhartt® Extremes® Zip-To-Waist Bib Overall

- 1000-denier Cordura® nylon, lined in arctic weight 100% quilted nylon polyester
- Water-repellent
- Double knees with cleanout bottoms that accommodate knee pads
- Leg zippers that zip to the hip and are covered with snap close wind flaps
- Zippered hand pockets



Item #	Waist	Length
R12BLK(size)	32"-50"	28"-34"

\$119.99



Carhartt® Quilt Lined Duck Bib Overall

- 12 oz heavyweight firm-hand, cotton duck
- Nylon lining quilted to arctic-weight polyester insulation
- Double knees to accommodate knee pads
- Zippered fly, leg zippers that open to knee with protective wind flap
- Multiple tool utility pockets, and a hammer loop



Item #	Waist	Length	Color
R02BLK(size)	32"-56"	30"-36"	Black
R02BRN(size)	30"-60"	30"-48"	Brown
R02DNY(size)	40"-54"	30"-32"	Navy

\$89.99
\$89.99
\$89.99



Carhartt® Arctic Quilt Lined Duck Bib Overall

- 12 oz firm-hand, heavyweight 100% cotton duck, and lined in arctic weight 100% quilted nylon
- Arctic quilt-lined
- Multiple tool and utility pockets
- Double knees with cleanout bottoms that accommodate knee pads
- Hammer loop
- Legs that zip to knee and have protective wind flaps
- Zip fly



Item #	Waist	Length	Color
R03BLK(size)	32"-50"	28"-33"	Black
R03BRN(size)	32"-50"	28"-33"	Brown

\$99.99
\$99.99

N-Ferno® Extreme Balaclava w/ Hot Rox™

- 2-piece, 320g fleece design provided excellent coverage of the face, neck and head
- Built-in heat exchanger provides warm air for inhalation in extreme conditions
- Form-fitting design prevents eyewear from fogging
- Hook-and-loop attachments
- Removable face mask
- One size fits most



Item #6970ERG

\$41.70

CORE Performance Work Wear® Outer Layers

Thermal Jacket

- Rugged 300D Polyester shell with PU and UV treatments
- Soft, warm fleece lining
- Armortex™ reinforcement zones in heavy wear areas
- Storm flap front
- Pockets: several, including back document and front cell
- Drawstring waist and adjustable cuffs
- Reflective accents help keep workers safe and seen
- YKK zippers



Item #4110(size)

\$129.20

2SM (Small), 3MD (Med), 4LG (Large), 5XL (X-Large)

Avail. at additional cost: 6XXL (2X-Large) & 7XXXL (3X-Large)

Thermal Vest

- Rugged 300D Polyester shell with PU & UV treatments
- Soft, warm fleece lining
- Armortex™ reinforcement zones in heavy wear areas
- Storm flap front
- Pockets: several, including back document and front cell
- YKK zippers
- Drawstring waist
- Reflective accents help keep workers safe and seen



Item #6463(size) SM-XL \$93.50

Available at additional cost: 2XL-3XL

Thermal Bib

- Rugged 500D Nylon outer shell provides protection from the elements – wind, repelling water, and keeping cold out
- Armortex™ reinforcement zones in heavy wear areas
- Several pockets including hip and chest
- Removable PE foam knee/shin pads
- Full-length YKK zippers on each leg to easily put on and take off without removing work boots
- “Be Tenacious” non-slip, adjustable elastic straps
- Reflective accents help keep workers safe and seen
- Straight leg design with inside elastic bottom, snap closure liner to protect against snow and water



Item #6470(size) MD-XL \$134.65

Available at additional cost: 2XL-3XL

Tingley Icon™ Premium Outerwear

Tingley Icon™ premium rainwear is engineered to provide superior comfort and safety in the toughest work environments. Waterproof, breathable fluorescent orange or lime fabric for all season comfort and excellent daytime visibility. 2" silver reflective tape reflects light for 360° nighttime conspicuity. Stitched and taped sealed seams for 100% waterproof protection. Mildew resistant and breathability tested ASTM E96.

Jacket

- Polyurethane on 300 denier polyester
- ANSI/ISEA 107 Class 3 compliant jacket
- Overhead shoulder design for complete freedom of movement with 2 mic tabs
- Hand warmer side pockets with front cargo pockets and hook and loop closure
- 2-way Zipper/storm fly front with throat guard
- Roll-a-way adjustable hood in collar design
- Full-vented cape back for improved air circulation
- D-ring access for fall protection harness
- Mesh/taffeta lining for added comfort
- Convenient front radio pocket with exterior badge holder
- Inner breast pocket with zipper closure
- Elastic cuffs with hook and loop take-up straps on sleeves
- Jacket attachment system will accommodate black fleece jacket as a liner

Item #J24172(size) SM-XL Lime w/ Fleece Liner **\$103.85/EA**
Item #J24122(size) SM-XL Lime **\$70.35/EA**
Item #J24129(size) SM-XL Orange **\$70.35/EA**
 Available at additional cost: 2XL-5XL



Tingley Icon™ Fleece Liner Jacket

All season heavy weight black fleece jacket can also be zipped in and out of the Icon (J24122 & J24129) and is included in the Icon 3.1 (J24172) jackets.

- Breathable, 300g insulating fleece
- Zipper front closure with storm fly front throat guard
- Overhead shoulder design for complete freedom of movement
- 2 slash side pockets with zipper closure
- Adjustable elastic waist draw-cord

Item #J72003(size) SM-XL **\$52.05/EA**
 Available at additional cost: 2XL-5XL

Overalls snap fly front

- Heavy duty suspenders with quick release buckles and crossover
- Hook and loop take-up straps on leg cuffs
- Take-up snaps on waist for adjustable fit
- ANSI/ISEA 107 Class E compliant

Item #024122(size) SM-XL Lime **\$40.10/EA**
Item #024129(size) SM-XL Orange **\$40.10/EA**
 Available at additional cost: 2XL- 5XL

Tingley Phase 2™ Jacket



- 150 denier polyester
- Breathable 360g insulating fleece provides warmth and comfort
- ANSI/ISEA 107 Class 2 compliant jacket
- 2" silver reflective tape reflects light for 360° nighttime conspicuity
- 4 exterior pockets for added convenience
- Overhead shoulder design for complete freedom of movement with 2 mic tabs
- Storm fly front and zipper front closure
- Front hand warmer pockets with zipper closure
- Right and left breast security pockets with zipper closure
- Adjustable elastic draw-cord at waist
- Can be zipped into the Icon™ (J24122 & J24129)

Item #J73022(size) SM-XL **\$59.90/EA**
 Available at additional cost: 2XL-5XL



Tingley Bomber II™ Insulated Jacket

- 210 denier polyester shell - great wear
- ANSI/ISEA 107 Class 3 compliant
- Stitched and taped seams for 100% waterproof protection
- Quilted polyester lining provides warmth and comfort
- 2" silver reflective tape for 360° nighttime conspicuity
- 5 exterior and 3 interior pockets for added convenience
- Storm fly front with zipper front closure
- Roll-a-way hood in collar for your convenience
- Slash front pockets with closure
- Left breast radio pocket with flap closure
- Overhead shoulder design for complete freedom of movement
- Elasticized cuffs and waist for comfortable fit
- Dark colored front helps conceal dirt

Item #J26112(size) SM-XL Lime **\$62.45/EA**
Item #J26119(size) SM-XL Orange **\$62.45/EA**
 Available at additional cost: 2XL-5XL

Radians® 3-In-1 Class 3 Weatherproof Parka

- PU coated Oxford polyester weather proof shell
- Removable inner fleece jacket with lined sleeves
- 2" silver reflective tape
- 4 lower, fleece lined pockets with zipper
- Fleece lined chest pocket
- Hidden inside side pocket
- 2 large inside pockets
- D-Ring pass through on back
- Wrist cuffs with closure



ANSI
3
Class

Item #SJ410BYLW(size) MD-2XL
Available at additional cost: 3XL-5XL

\$88.75

Radians® 3-In-1 Class 3 Deluxe Bomber Jacket

- Zip out removable fleece jacket with lined sleeves
- PU coated oxford polyester weather proof shell
- Concealed attached hood
- Dual mic tabs
- Elastic oxford waistband
- Elastic oxford wrist cuffs with closure
- 2" silver reflective material tape
- Covered fleece lined slash pockets
- Gusseted cell phone/radio chest pocket with clear ID pocket



ANSI
3
Class

Item #SJ210BYLW(size) MD-2XL YLW **\$64.50**
Item #SJ210BORG(size) MD-2XL ORG **\$64.50**
Available at additional cost: 3XL-5XL

Radians® Class 3 Quilted Multi-Color Bomber Jacket

- 2" silver reflective material tape
- Dual mic tabs
- Upper front- gusseted flap covered radio pocket
- 2 zipper closure lined pockets in lower front
- Inside- 1 open chest pocket
- Clear, chest badge holder
- 300 Denier multi-color PU coated oxford polyester weather proof shell
- Concealed detachable hood
- Elastic knit waistband and wrist cuffs
- Meets ANSI Class 3 standards



ANSI
3
Class

Item #SJ12(size) MD-2XL
Available at additional cost: 3XL-5XL

\$67.50

Helly Hansen Boden Class 2 Reflective Fleece Jacket

- Offers warmth and comfort
- Meets standards for ANSI/ISEA 107 2010 for Class 2 high visibility clothing
- Made of yellow 100% polyester fleece
- Silver reflective striping across waist, sleeves, and shoulder
- Front zipper with chin guard
- Two front pockets
- Elastic cuffs



ANSI
2
Class

While
Supplies
Last

Item #72369369(size) MD-3XL **\$49.95**



#JS103

#JS102

ML KISHIGO

ANSI
3
Class

Full Zip Class 3 Hooded Sweatshirt

- High quality 9 oz sweatshirt material
- 2" wide CNSS reflective material
- 2 lower outside slash pockets
- Full front zipper closure
- Black lower body and sleeves help conceal dirt
- Rib knit cuffs
- Meets ANSI/ISEA 107 Class 3 standards

Item #JS102(size) MD-5XL Grn/Ylw **\$41.65**
Item #JS103(size) MD-5XL Orange **\$41.65**

Class 3 Long Sleeve Hooded Sweatshirt

- 7.25 oz Polyester fleece material
- Full front zipper closure
- 2 lower pouch pockets
- Black elastic knit waistband and cuffs
- 2" silver reflective material tape
- Hood is lined with double, birds-eye mesh to maximize airflow and quickly dry moisture with adjustable pull cords
- Meets ANSI/ISEA 107-2010 Standards



ANSI
3
Class

Item #SJ01G(size) Grn/Ylw MD-2XL **\$34.50**
Item #SJ010(size) Orange MD-2XL **\$34.50**
Available at additional cost: 3XL-5XL

Potsdam Class 3 Parka Jacket

- Elastic cuffs with Velcro® adjustment, storm flap with zip and Velcro® closure
- Under sleeve zipper for ventilation
- Detachable hood made for hard hat features draw-cord
- 2 hand and chest pockets with zip closure
- Map pocket under storm flap, mobile pocket with pen pocket on right chest
- Extended back with draw-cord at waist and hem
- Click.on™ loops for additional accessories
- Meets ANSI Class 3 standards and ASTM F1671 standards for bloodborne pathogen testing



Item # 71374YLW(size) SM-2XL **\$170.00**
Available at additional cost: 3XL-6XL

Potsdam Class E Bib Overalls

- Detachable suspenders and articulated knees
- 2 hand pockets, ruler pocket, inside kneepad pocket, bellowed thigh pocket and back pocket with flap
- Boot zip under flap with Velcro® closure Velcro® adjustment at bottom hem
- Broad back belt tunnel for extra support and stability
- Click.on™ loops for additional accessories
- Meets ANSI Class E standards and ASTM F1671 standards for bloodborne pathogen testing



Item #71475YLW(size) SM-2XL **\$144.00**
Available at additional cost: 3XL-6XL

Helly Hansen Boden Down Parka

- Made of 100% Polyester Oxford, Allied down 85/15 European goose FillPower 700+
- Helly Tech® - waterproof/breathable
- Taped seams
- Detachable hood (faux fur also detaches)
- Hood with draw-cord adjustment at front and adjustment at back
- Storm flap with velcro closure
- Chin guard and back placket
- YKK vislon two-way center front zipper
- Chest pocket with flap and velcro closure
- Click.on™ loops at chest
- Draw-cord adjustment at inside waist
- Hand-warmer and cargo pockets
- Sleeve pocket with YKK zipper at left sleeve
- Piping for reinforcement at bottom sleeve



- YKK vislon side zippers for better movement
 - Zipper on inside lining to permit embroidery
 - Invisible inside pocket at right side
- #73347BLK** is black with reflex at sleeves and shoulders.
#73347YLW is fluorescent yellow ANSI/ISEA 107 (2010) Reflex at sleeves, shoulders and body, Class 3

Item #73347BLK(size) SM-2XL **\$395.00**
Item #73347YLW(size) SM-2XL **\$395.00**
Available at additional cost: 3XL-4XL

Potsdam Class 2 Lining Jacket

- Made of 100% polyester 200g and 100% nylon lining with 120g padding
- Reflective tape on shoulders and waist
- Light fleece in collar and chin guard
- Stormflap with zip and velcro closure
- Mobile pocket with velcro closure on right chest
- 2 hand pockets with zip and snap closure
- Click.on™ loops for additional accessories
- Meets ANSI Class 2 Standards
- Quilted insulation in vest body and in zip off sleeves with elastic rib cuffs
- Zip-in option with Helly Tech® style 71374YLW Potsdam Parka Jacket



Item #73374ORG(size) XS-2XL **\$125.00**
Item #73374YLW(size) XS-2XL **\$125.00**
Available at additional cost: 3XL-6XL

Helly Hansen Chelsea Jacket

- Made of Cordura® reinforcement fabric 79% cotton and 21% polyester- 295 g/m²
- Micro fleece inside collar and cuffs
- Zipper under stormflap in front
- 2 chest pockets with flaps
- 2 hand pockets with zipper closure
- 2 inside pockets with Velcro® closure
- Velcro® adjustment on sleeves
- Reinforced fabric on elbows, shoulders and hem with reflective piping on elbows, shoulders and back
- Extension in back for better movement



Item #76040BLK(size) **\$88.00**
Unlined Jacket, SM-2XL
Item #76041BLK(size) **\$98.00**
Lined Jacket, SM-2XL
Available at additional cost: 3XL-4XL

Helly Hansen Chelsea Construction Pant

- Made of Cordura® reinforcement fabric 79% cotton and 21% polyester- 295 g/m²
- Reinforcement is 100% Nylon Cordura® 210 g/m²
- Front fly with zip and plastic covered metal buttons
- Knee pad pockets in Cordura® that are accessible from the inside
- Knee pad position can be adjusted 5 cm for better fit
- Ruler pocket with double bottom in Cordura®
- Removable button for attaching knives
- Thigh pocket with flap for accessories and mobile phone pocket
- 2 back pockets, one with flap and Velcro® closure and reflex piping
- 2 hanging front pockets for nails/screws in Cordura®, with angled corners and double bottom
- Polyester loops for hand tools
- 2 pockets at front
- Broad belt tunnel at back for extra strength and stability
- Belt loops with Click.on™ function for additional accessories
- Loops with double Velcro® on both sides for hammer holders

Item #76488BLK(size) **\$85.00**
W: 30"-44" L: 30"-34"

Kastrup Base Layer Polypropylene Thermals

- Made of 100% polypropylene 130g filament yarns
- Does not absorb perspiration
- Extremely quick drying
- Lightweight and non-allergic
- Ideal for temperatures ranging from 14°F to 50°F
- Designed for high activity work at cool temperatures



\$40.00

CORE Performance Work Wear® Base Layer

- Moisture wicking fabrics and venting for multi-climate comfort
- Anti-stink treatment helps workers remain unscented
- Soil release treatments make cleaning easy
- 50+ UPF for protection against harmful UV
- Reflective accents help keep workers safe and seen
- Comfort design: stretch fabrics, flat seams, shirt also features raglan sleeves and a long tail cut



#6435

#6480

Item #6435(size) MD-3XL

\$44.80/EA

Item #6480(size) MD-3XL

\$37.50/EA

Kastrup Crewneck Long Sleeve Shirt

- Extended back for added protection
- Long sleeve crewneck base layer shirt

Item #75016BLK(size) SM-2XL

Available at additional cost: 3XL-4XL

Kastrup Pants

- Base layer pants with fly front

Item #75416BLK(size) SM-2XL

Available at additional cost: 3XL

\$40.00

Roskilde Base Layer Merino Thermals

- Made of 57% Merino wool and 43% Polypropylene 240g filament yarns
- Does not absorb perspiration
- Extremely quick drying
- Lightweight and non-allergic
- Ideal for temperatures ranging from -4°F to 32°F
- Fabric transfers moisture from skin to outer fabric for evaporation



\$80.00

Item #75026BLK(size) SM-2XL

- Crewneck Long Sleeve Shirt with extended back

Item #75426BLK(size) SM-2XL

- Base layer pants without fly front

\$80.00

Both available at additional cost: 3XL-4XL

FR Wool Ebeltoft Long Sleeve Shirt

- Antistatic EN1149 flame resistant crewneck
- Pre-washed 200 g midweight interlock fabric
- 48.5% wool, 48.5% viscose, 3% INOX
- Complies with FR requirements of ASTM F 2302, EN 531, and EN 533
- Insulated
- Should only be worn underneath other clothing that is rated for fire resistance
- Not intended for direct flame contact or for prolonged high heat exposure



\$65.00

Item #75300960(size) LG-3XL

Kastrup Thermal Glove Liner

- Made of 100% polypropylene 130g filament yarns
- Does not absorb perspiration
- Extremely quick drying
- Lightweight and non-allergenic
- One size fits most
- Ideal for temperatures ranging from 14°F to 50°F
- Great for cold weather and general purpose applications
- Black



\$18.00/EA

Item #79691

carhartt

Carhartt® Midweight Cotton Union Suit

- Made of 8 oz midweight 100% cotton ring-spun knit
- Reinforced stitching on all seams
- Back and fly opening with button closure
- Rib-knit neck and cuffs retain warmth
- Tagless neck label
- Carhartt logo printed on chest



Item #K226RED(size)

MD-2XL

\$39.99



#100640001 #100640103

#100639001

#100639103

carhartt

Base Force™ Cotton Super-Cold Weather Wear

- 9.5 oz 100% cotton ring-spun knit
- FastDry® technology wicks away sweat for comfort
- Stain Breaker® technology releases stains
- Reinforced stitching on all seams
- Rib-knit cuffs that retain warmth
- Tagless neck label
- Odor fighting thermal bottom with elastic waist

Item #100639001(size) SM-2XL

\$29.99

Item #100639103(size) SM-2XL

\$29.99

Item #100640001(size) SM-2XL

\$29.99

Item #100640103(size) SM-2XL

\$29.99

Available at additional cost: 3XL-4XL

p.a.w.s.® Antimicrobial Hand Wipes

- Formulated with 66.5% ethyl-alcohol to kill 99.99% of germs and viruses*
- Contain Aloe Vera to keep your skin feeling soft and smooth
- Remove debris and soil from hands and under fingernails, an important function in the absence of soap and water
- Meets OSHA, APIC and CDC hand washing recommendations in the absence of soap and water



Item #34400 100/Box
Item #34405 50/Tub
Item #34410 160/Tub

\$6.80/BX
\$6.70/TUB
\$10.60/TUB

Safetec® Instant Hand Sanitizer (Fresh Scent)

- Kills 99.99% of germs in 15 seconds*
- Evaporates completely to leave hands not feeling sticky
- Contains aloe vera for added moisture and increases skin hydration
- Pandemic and Infection Control Product
- Aids in reducing the risk of cross-contamination
- Meets OSHA, APIC and CDC hand washing recommendations in the absence of soap and water
- Effective against: MRSA, HIV-1, E. COLI, VRE and AVIAN FLU



Item # 17355 2 oz Bottle
Item # 17350 4 oz Bottle
Item # 17370 8 oz Bottle
Item # 17377 144 Gel Packets

\$1.10/BT
\$1.90/BT
\$2.85/BT
\$10.80/BX

SaniZide Plus® Germicidal Disinfectant

- Pandemic and infection control product
- Complies with OSHA Bloodborne Pathogens Standard
- Provides personal protection mandated by OSHA and State Health Departments
- For use on all hard, non-porous surfaces normally treated with a disinfectant
- Fast-acting, multi-purpose, broad-spectrum disinfectant/deodorizer for hard surfaces
- Alcohol free formulation is a non-corrosive, non-flammable and EPA registered



Item #34805 16 oz. Spray Bottle
Item #34810 32 oz. Spray Bottle
Item #34823 160/ct Wipe Canister

\$4.30/BT
\$7.45/BT
\$7.50/TB

• Effective against TB, HIV, Hepatitis A, B, & C, MRSA, VISA, VRE, and now CA-MRSA and *Kills Pandemic 2009 H1N1 Influenza A

Safetec

Medikoff Drops

Menthol and eucalyptus vapor action cough drops clear nasal passages and provide temporary relief of minor throat irritation and coughs due to colds or inhaled irritants. Compare active ingredient to Halls® Cough Drops.



Each drop contains:
 Menthol 7.6mg

Item #05022 75/Box
Item #05060 600/Apothecary Jar
Item #50601 600/Box

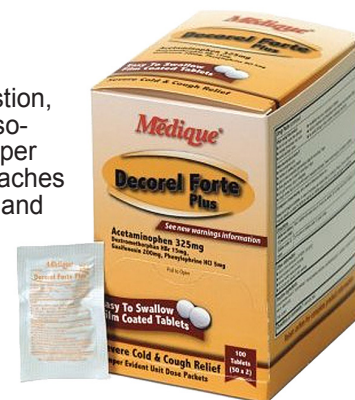
\$5.90/BX
\$38.50/BX
\$29.90/BX

Safetec

Medique®

Decorel Forte Plus Cold Tablets

Fast relief from allergies, congestion, nasal secretions and coughs associated with common cold and upper respiratory conditions. Relieves aches and pains associated with colds and flu. Reduces fever.
 2 Easy-to-swallow, film coated tablets per pack.



Each tablet contains:
 Acetaminophen 325mg, Guaifenesin 200mg, Phenylephrine HCl 5mg, Dextromethorphan HBR 15mg

Item #42533 50 X 2's packets
Item #42513 250 X 2's packets

\$7.25/BX
\$42.50/BX



Hazard Risk Category

1

carhartt 

Flame-Resistant Force® Grid Beanie

- 11.7 oz FR Polartec® Power Stretch® fabric: 68% modacrylic/29% rayon/3% spandex
- Grid construction maximizes warmth, minimizes weight, enhances breathability and fights odors
- FastDry® technology wicks away sweat for comfort
- Meets performance requirements of NFPA 70E
- Inherently flame-resistant fabric
- Arc rating ATPV= 5.2 cal/cm²
- HRC Level 1

Item #100492001	Black	\$25.00
Item #100492410	Dark Navy	\$25.00
Item #100492075	Steel	\$25.00
Item #100492211	Brown	\$25.00

Flame-Resistant Fleece Hat

- 10.5 oz, FR Polartec® Wind Pro® fleece
- Rain Defender® durable water-repellent finish
- High warmth-to-weight ratio
- Highly wind-resistant
- Meets performance requirements of NFPA 70E
- Fits nicely under a hard hat
- ATPV= 16 cal/cm²

Item #101578 \$29.00



Hazard Risk Category

2

Flame Resistant Double Layer Force Balaclava

- FR 6 oz, 2-ply knit: 48% modacrylic/48% Tencel®/ 4% spandex
- FastDry® technology wicks away sweat for comfort
- Full facial protection extends below the neckline
- Face mask pulls down below the chin when not needed
- Flat-seam, 2-ply construction
- Enhanced comfort and warmth
- Meets performance requirements of NFPA 70E
- Arc rating: ATPV= 15 cal/cm²
- HRC Level 2

Item #FRA003DNY \$35.60



Hazard Risk Category

2

Premium FR Helmet Liner

- 100% FR cotton twill outer shell
- Soft plush Velour/ Nomex® /Kevlar® blend liner
- Nomex® Thread
- DuPont™ Tyvek® insulated ear barrier
- Hook & Loop closure
- Reflective strip on back above neck
- Superior wind resistance
- Meets ASTM F1506
- Arc Rating: ATPV = 31 cal/cm²
- NFPA 70E / HRC=3
- Flame resistant for up to 50 washings



Hazard Risk Category

3



Item# SS550FR \$39.10

Premium FR 3-in-1 Fleece Balaclava Face Mask

- Warm lightweight fleece
- Jersey outer shell
- Super soft Velour inner
- Nomex®/Kevlar® blend
- Kevlar® thread
- Drawstring for adjustable, snug fit
- Hook and Loop tabs attachment to hard hat
- Meets ASTM F1506
- Arc Rating: ATPV = 9.7 cal/cm²
- NFPA 70E / HRC = 2
- Flame Resistant for the life of the garment



Hazard Risk Category

2



Item #1070FR \$38.30

Premium FR Full Face Helmet Liner

- Comfortable with maximum stretch
- 8.75 oz. Nomex® rib knit
- Fits snugly over most regular brim hard hats
- Meets ASTM F1506
- Arc Rating: ATPV = 7.8 cal/cm²
- NFPA 70E / HRC = 1
- Flame resistant for the life of the garment



Hazard Risk Category

1



Item #LK910NFR \$22.10

JACKSON SAFETY BRAND

AA-7 WINDGARD* Head Protection

- Traps warmth and prevents moisture build-up
- Keeps wind out
- Knitted flame resistant treated spun polyester
- Designed to fit over most hard hats

Item #KB1 \$5.10



AA-9 WINDGARD* Head Protection

- Knitted flame resistant treated spun polyester meets 16 CFR 1610, Class 1
- Keeps wind out
- Traps warmth and prevents moisture build-up
- Designed to fit over most hard hats and covers mouth, face and neck

Item #22223 Blue \$9.25
Item #22225 Red \$9.25



Hi-Viz Fleece Knit Cap

- 1/2" wide super bright silver retro reflective tape
- Fleece offers a soft touch with additional warmth
- One size fits most, machine washable
- Hi-Viz Orange color
- Does not meet ANSI/ISEA Z107-2004 Standards

Item #3014360 \$8.99

JACKSON SAFETY BRAND



While Supplies Last

CORE Performance Work Wear® FR Outer Layer Hooded Fleece Sweatshirt

- 12.4 oz, 100% FR cotton knit (Pyrosafe by Antex)
- Arc-rated; ATPV rating of 18.0 cal/cm²
- Moisture wicking material for multi-climate comfort
- Anti-stink treatment helps workers remain unscented
- Comfort design: stretch fabric and cuffs, flat seams, double lined attached hood with adjustable lace closure
- Hidden zip-up arm pocket for key or cellphone storage
- Visible FR tags including HRC level to ensure workers are wearing compliant gear
- Meets requirements of ASTM F1506; Classified CAT 2 (formerly HRC) according to NFPA 70E and is a certified NFPA 2112 garment
- CSA-Z462 compliant



Pull-Over Hoodie

- Item #7440GRY(size)** Gray SM-3XL **\$166.50**
- Item #7440NVY(size)** Navy SM-3XL **\$166.50**

Zip-Up Hoodie with Chest Pocket

- Item #7445GRY(size)** Gray SM-3XL **\$181.50**
- Item #7445NVY(size)** Navy SM-3XL **\$181.50**

CORE Performance Work Wear® FR Mid Layer Long Sleeve Shirt

- 6.7 oz FR knit, Protex/Lyocell/Aramid (Tecasafe Plus)
- Arc-rated; ATPV rating of 8.2 cal/cm²
- Moisture wicking material for multi-climate comfort
- Anti-stink treatment helps workers remain unscented
- Comfort design: raglan sleeves, stretch fabrics, flat seams, long tail cut
- Front chest pocket for storage
- Visible FR tags including HRC level to ensure workers are wearing compliant gear
- Meets requirements of ASTM F1506; Classified CAT 2 (formerly HRC) according to NFPA 70E and is a certified NFPA 2112 garment
- CSA-Z462 compliant



Ultra Soft Crew Neck

- Item #7425GRY(size)** Gray SM-3XL **\$91.50**
- Item #7425NVY(size)** Navy SM-3XL **\$91.50**

3 Button Down Henley

- Item #7430GRY(size)** Gray SM-3XL **\$96.00**
- Item #7430NVY(size)** Navy SM-3XL **\$96.00**

CORE Performance Work Wear® FR Base Layer

- 5.8 oz, 90% Cotton 10% Spandex (Pyrosafe by Antex)
- Side vents are 5.3-ounce knit, 85% FR cotton /8% Polyester/7% Spandex and ATPV rating of 6.0 cal/cm²
- Arc-rated; ATPV rating of 7.4 cal/cm²
- Moisture wicking fabrics and venting for multi-climate comfort
- Anti-stink treatment helps workers remain unscented
- Visible FR tags including HRC level to ensure workers are wearing compliant gear
- Meets requirements of Performance Specification ASTM F1506; Classified CAT 1 (formerly HRC) according to NFPA 70E
- CSA-Z462 compliant
- Comfort design: stretch fabric, flat seams, relaxed fit
- Shirt features raglan sleeves and long tail cut
- Undershorts feature wide woven waistband



- Item #7415GRY(size)** Gray SM-3XL **\$60.00**
- Item #7470GRY(size)** Gray SM-3XL **\$36.00**

N-Ferno® FR Fleece Balaclava

- Meets requirements of Performance Specification ASTM F1506; Classified CAT 2 (formerly HRC) according to NFPA 70E
- Reflective accent for higher visibility
- Stretchable and comfortable
- One size fits most
- #6828ERG - Modacrylic blend, Arc-rated; ATPV of 10.6 cal/cm²
- #6825 - Nomex®, Arc Rated, ATPV of 9.7 cal/cm²

- Item #6825** **\$42.50**
Nomex®, Arc Rated, ATPV of 9.7 cal/cm²
- Item #6828ERG** **\$51.25**
Modacrylic Blend, Arc Rated, ATPV of 10.6 cal/cm²





#75090BLK **#75490BLK**
Hazard Risk Category **2**

#75090DNM **#75490DNM**

Helly Hansen Fargo FR Base Layers

- Anti-static fabric
- Made of 48.5% Kermel®, 48.5% FR Lenzing® and 3% Belltron® interlock knit 230g
- Ventilates excess heat and transports perspiration and moisture away from the skin keeping your body dry and warm
- Highly resistant to abrasion and flatlock seams
- Double knit cuffs
- Offers excellent protection against heat, flames, and electrical arc flash
- Meets ASTM F2302, ASTM F1506 and NFPA 70E standards
- Arc rating ATPV= 12.2 cal/cm², HRC Level 2

Base Layer Crewneck Long-Sleeve Shirt

Item #75090BLK(size) SM-2XL **\$119.00**

Item #75090DNM(size) SM-2XL **\$119.00**

Base Layer Pant

Item #75490BLK(size) SM-2XL **\$114.00**

Item #75490DNM(size) SM-2XL **\$114.00**

Available at additional cost: 3XL-4XL



Helly Hansen Duluth FR Thermal Layer Hood

- Comfortable FR rib knit around face opening and contouring neck to fit under a jacket
- Made of 50% Kermel®, 25% Wool, 22% FR Lenzing®, and 3% Beltron® fleece knit
- Anti-static fabric
- Insulates effectively against cold and also against extreme heat generated by an electrical arc by trapping air in a robust textile construction
- Self extinguishing with permanent FR properties
- Highly resistant to abrasion and flatlock seams
- One size fits most
- Meets ASTM F1506, ASTM F2302 and NFPA 70E standards
- Arc rating ATPV=18.1 cal/cm², HRC Level 2

Hazard Risk Category **2**

Item #79894GRY \$66.00



#72190GRY **#72190ORG** **#72490GRY** **#72490ORG**

Hazard Risk Category **2**

Helly Hansen Duluth FR Thermal Apparel

- Made of 50% Kermel®, 25% wool, 22% FR Lenzing® and 3% Belltron®, fleece knit 410g
- Ventilates excess heat and transports perspiration and moisture away from the skin keeping your body dry and warm
- Self extinguishing with permanent FR properties
- Anti-static fabric
- Highly resistant to abrasion and flatlock seams
- FR knit cuffs at wrist and ankles
- Meets ASTM F2302, ASTM F1506 and NFPA 70E standards
- Arc rating ATPV=18.1 cal/cm²
- HRC Level 2

Duluth FR Thermal Sweatshirt Jacket

- High collar design with draw-cord adjustable hood
- Reinforced zipper and collar edge with FR binding
- Front NOMEX®/brass zipper closure with inner storm flap
- 2 side seam pockets

Item #72190GRY(size) SM-2XL **\$240.00**

Item #72190ORG(size) SM-2XL **\$240.00**

Available at additional cost: 3XL-4XL sizes

Duluth FR Thermal Pant

Item #72490GRY(size) SM-2XL **\$196.00**

Item #72490ORG(size) SM-2XL **\$196.00**

Available at additional cost: 3XL-4XL sizes



Helly Hansen Fargo FR Balaclava

- Anti-static fabric
- Made of 48.5% Kermel®, Viscose and 3% Belltron® interlock knit
- Insulates effectively against cold as well as extreme heat generated by an electrical arc by trapping air in a robust textile construction
- Self extinguishing with permanent FR properties
- Highly resistant to abrasion and flatlock seams
- Ribbed expandable face opening
- Meets ASTM F1506, ASTM F2302 and NFPA 70E standards
- Arc rating ATPV=12.2 cal/cm², HRC Level 2

Hazard Risk Category **2**

Item #79892DNM Denim **\$42.75**

Item #79892BLK Black **\$42.75**



Insulated FR Parka, Coveralls & Bib Overalls

9 oz FR cotton protective clothing is ideal for industrial applications in which the dangers of flash fires and/or explosions are an everyday worry. With the built in toughness of FR material, these cotton coveralls are economical FR protection that's made to last. Sports extra reflective tape for 360° visibility.



Hazard Risk Category
4

FR Insulated Cotton Coveralls

- Reinforced seams
- Two-way quick release zipper
- Full length front zipper closure
- 2 breast pockets
- 2 "swing" hip pockets
- 2 seat pockets
- 1 utility pocket on right leg
- Leg zippers for easy donning and doffing

Item #IC08RT13(size) MD-2XL **\$330.00**

Available at additional cost: 3XL-4XL

FR Insulated Cotton Parka

- Reinforced seams
- Fully insulated stand up collar
- Two-way quick release zipper
- Full length front zipper closure
- 2 oversized chest pockets, 2 lower pockets and 1 inside chest pocket
- Adjustable wrist cuffs

Item #IP08RT13(size) MD-2XL **\$315.00**

Available at additional cost: 3XL-4XL

FR Insulated Cotton Bib Overalls

- Durable bib straps with non-metallic quick release clips
- 2 angled overall chest pockets with hook and loop closures
- Leg zippers for easy donning and doffing

Item #IB08RT13(size) MD-2XL **\$243.75**

Available at additional cost: 3XL-4XL

N-Ferno® FR Winter Helmet Liner

- 2-Layer or 3-layer Modacrylic cotton blend twill shell with Modacrylic cotton blend fleece lining
- 3M™ FR Thinsulate™ mid-layer and modacrylic cotton blend fleece lining to provide extreme warmth and protection
- Elastic gather at forehead
- Hook-and-loop straps for easy attachment
- Warming pack pockets
- Meets ASTM F1506 and NFPA 70E standards
- One size fits most



Item #	Layers	Arc Rating ATPV	CAT Protection	
6880E	2	20 cal/cm ²	Level 2	\$21.00
6882E	2	20 cal/cm ²	Level 2	\$33.00
6890E	3	27 cal/cm ²	Level 3	\$24.00
6892E	3	27 cal/cm ²	Level 3	\$37.50

N-Ferno® FR 2-Layer Winter Liner

- Upper section: Modacrylic cotton blend twill with Modacrylic cotton fleece lining (ATPV rating of 20 cal/cm²)
- Lower section: Double layer modacrylic blend rib knit (EBT rating of 17.0 cal/cm²)
- Nomex® Metal Zipper
- Hook-and-loop straps for easy attachment
- Warming pack pockets
- Meets ASTM F1506 and NFPA 70E standards
- Classified CAT 2 (formerly HRC)



Item #6885E **\$40.50**

Helly Hansen FR Hard Hat Pullover

- Nomex outer shell 200g
- Quilted FR lining 370g
- FireLite™ by Eurotex 2" Yellow/Silver/Yellow stripe for daytime and nighttime visibility on back
- Adjustable front closure
- Meets ASTM F2302, ASTM F1506, ATPV 73 cal/cm², and NFPA 70E
- HRC Level 4 protection

Hazard Risk Category
4



Item #79936NVY

\$72.25

Helly Hansen FR/ARC Class 3 Winter Apparel

- 360g 10oz FR cotton outershell
- 370g Quilted FR lining featuring Arcxel™
- 3M™ Scotchlite™ FR reflective striping in CSA Striping around legs, on chest and "X" on back
- Front storm flap over Nomex®/brass zipper with concealed snap closure
- Double top-stitching for durability and strength
- Elastic back waist
- Large front cargo pockets
- Inner storage pocket
- Wind-proof
- Water resistant
- Machine washable
- Meets ASTM F3202, ASTM F1506, ATPV-73 cal/cm² and NFPA 70-E standards
- HRC Level 4 protection



Hazard Risk Category
4



FR Insulated Jacket w/ Reflective Striping

- FR inner knit storm cuffs for heat retention
- Inner windbelt with snap closure

Item #76349NVY(size) SM-2XL **\$485.00**

Available at additional cost: 3XL-4XL

FR Insulated Bib Overall w/ Reflective Striping

- Concealed snaps for attachment to 76349

Item #76549NVY(size) SM-2XL **\$485.00**

Available at additional cost: 3XL-4XL

Eclipse™ Quad-Hazard® Rainwear

The Eclipse™ Revolutionary Quad-Hazard™ protection offers high visibility, liquid proof, arc and flash protection. Thermo-Grid® technology helps block out heat energy while the flame resistant PVC coating on Nomex® provides 100% liquid proof protection.

- ANSI/ISEA 107 Class 3 compliant for flame resistance and high visibility
- Conforms to ASTM F1891 for Arc Thermal performance and NFPA 70E - HRC 2
- Conforms to ASTM F2733 for Flash Fire Performance for jackets and overalls only
- 2" silver reflective tape reflects light for 360° nighttime conspicuity
- Overhead shoulder design for complete freedom of movement while working overhead
- Therm-O-Rad sealed seams
- Non-conductive, non-corrosive hardware

TINGLEY
A TRADITION SINCE 1898

#J44122



Hazard Risk Category



#O44122



#C44122



Eclipse™ Flame Resistant Coat & Jacket

- Flame resistant corduroy collar with roll-a-way hood for comfort and convenience
- Zipper/storm fly front with snap closure and hidden hardware seals out heat, wind, rain and contaminants
- Oversized 3 piece hood with adjustable hook-and-loop take-up strap for safe fit
- Full-vented cape back for improved air circulation
- D-ring access for fall protection harness
- Adjustable elastic draw-cord for added protection

#J44129



Hazard Risk Category



#C44129

Eclipse™ Flame Resistant Overalls

- Snap fly front overalls
- ANSI/ISEA 107 Class E compliant overalls for high visibility
- Self material suspenders with heavy duty quick release buckles and crossover

48" Rain Coats

Item #C44122(size) SM-XL 8.7 cal/cm² Rating Yellow/Green **\$128.00**
Item #C44129(size) SM-XL 11 cal/cm² Rating Orange/Red **\$128.00**

Available at additional cost: 2XL-4XL

Rain Jackets

Item #J44122(size) SM-XL 8.7 cal/cm² Rating Yellow/Green **\$117.05**
Item #J44129(size) SM-XL 11 cal/cm² Rating Orange/Red **\$117.05**

Available at additional cost: 2XL-5XL

Eclipse™ Flame Resistant Overalls

Item #O44122(size) SM-XL 8.7 cal/cm² Rating Yellow/Green **\$71.10**
Item #O44129(size) SM-XL 11 cal/cm² Rating Orange/Red **\$71.10**

Available at additional cost: 2XL-5XL



Flame Resistant Hood

- 2 ply stretch hood
- Offers excellent head and neck protection with a lightweight, flexible design
- Can be worn under face mask or hard hat for added warmth
- Complies with ASTM, NFPA 70E, and OSHA Standards for HRC protection
- 8" bib length
- Launderable
- One size fits all
- #H11RY & #H11RV are UltraSoft® single layer
- #H61NK is 100% Nomex® double layer

Item #	Arc Rating	Layer(s)	Color	
H11RY	12 cal/cm ²	Single	Navy	\$23.45
H11RV	25 cal/cm ²	Single	Navy	\$29.10
H61NK	10 cal/cm ²	Double	White	\$44.50

Helly Hansen FR Waterproof Reflective Apparel

- 240g FR PU coated Aramid knit
- 3M™ Scotchlite™ reflective material CSA style for enhanced visibility
- Waterproof apparel protect against rain and wind, keeping the body dry and warm
- Microwelded™ heat-sealed seams
- Meets ASTM F2733, F1891 and NFPA standards for HRC Level 2 protection
- ATPV arc rating equals 8.6 cal/cm²



Hazard Risk Category



Class 2 FR Waterproof Reflective Jacket

- Velcro® detachable generously cut 3 panel helmet hood with elastic gathered hood
- Inside double storm flap with concealed nickel plated brass snaps and Velcro® closure

Item #70219ORG SM-2XL **\$315.00**
 Available at additional cost: 3XL-4XL

Class E FR Waterproof Reflective Bib Pant

- Can be worn back to front for longer wear
- Adjustable suspenders with quick release buckles
- Side gusset for easy entry
- Meets ANSI Class E standards

Item #70519ORG SM-2XL **\$290.00**
 Available at additional cost: 3XL-4XL



Tank Top Propane Heater

Mr. Heater tank top propane heater is for outdoor use only. Ready to use and mounts directly to one 20lb propane cylinder (sold separately). Safe, heater shut-off automatically with loss of flame. Adjustable high, medium and low heater control.



Single Burner Heater
Item #MH15T **\$51.85**

Double Burner Heater
Item #MH30T **\$92.45**

Triple Burner Heater
Item #MH45T **\$124.00**

Cordless Forced Air HERO Heater, 35,000 BTU/HR

Fully assembled, ready to use, no electricity required - heats during power outages. Operates up to 8 hours on a single charge. Operates on standard 20lb propane cylinder. Clean burning, quiet, odorless. Tip-over switch, safety shutoff, P.O.L. connection with 20' hose included. Heats up to 800 square feet, CSA certified.



Item #HS35CLP **\$196.90**

Propane Hose



Use Heatstar propane hose to connect all portable heater appliances to standard 20lb tank. Regulator not included.



Item #F273701 5' Hose **\$28.00**

Item #F273702 12' Hose **\$77.90**

Convection Propane Heater

Heatstar Convection propane heater for the jobsite. Features "Insta-lock" chamber for easy assembly with Piezo push button igniter. Standing pilot for increased safety and telescoping chamber for reduced ship cube/retail space. 20' hose and regulator included.



HS200CV is used on larger job sites and runs up to 29 hours on 100 pound tank (low setting). Heats approximately 4,700 square feet, CSA certified. 75,000 - 200,000 BTU/HR. Dimensions: 18.25" X 15" X 27.5"

HS80CV is used on smaller job sites and runs up to 14 hours on 20lb tank (low setting). Heats approximately 1,900 square feet, CSA certified. 30,000 - 80,000 BTU/HR. Dimensions: 15.25" X 18.25" X 21.75"

Item #HS80CV For Smaller Jobsites **\$108.35**
Item #HS200CV For Larger Jobsites **\$124.00**

#MH9B



#MH18B



Portable Buddy Heater, 200 Sq feet

Mr. Heater Portable Buddy heater features a new fold-down handle for compact storage and swivel out regulator for easy fuel connection. Designed and approved for emergency indoor and outdoor use. Automatic low oxygen shut-off system, accidental tip-over safety shut-off. Lightweight, easy to carry heats up to 200 square feet. Connects directly to a 20 lbs cylinder with optional hose. CSA certified.

Item #MH9B **\$103.15**

Portable Buddy Heater, 400 Sq Feet

Designed and approved for emergency indoor and outdoor use. Automatic low oxygen shut-off system, accidental tip-over safety shut-off. Heats up to 400 square feet. Connects directly to two 1 lb disposable cylinders or to a 20 lbs cylinder with optional hose. CSA certified.

Item #MH18B **\$140.65**

Fan Forced Portable Electric & Radiant Heater

The 198TMC radiant and fan forced shop heater circuits infrared radiation that directly heats objects or people within their path. Features a fan as well as radiant technology to circulate heat evenly throughout an area. 3 heat settings include a 600 watt radiant setting, 900 watt fan forced setting and a 1500 watt radiant and fan-forced setting. Temperature control thermostat allows you to adjust the heat output and ensure maximum comfort.



DIVAL
Safety & Supplies for Life

Tip-over-switch allows the heater to automatically shut-off if tipped over to prevent injuries and damage to your home. Small and portable design allows it to be used almost anywhere. 5,120 BTU heating capacity. 12-1/2 amperage. 120 voltage. 12" L x 11" W x 15" H. 6' cord length. UL approved.

Item #198TMC **\$96.35**

Deluxe Milk-House Portable Electric Utility Heater

The deluxe Milk-House utility heater features a 1300/1500 watt dual heat fan only setting with easy adjustment control knobs. Quick set thermostat controls allow you to adjust the heat output and ensure maximum comfort. Tip-Over-Switch allows the heater to automatically shut off if tipped over in order to prevent injuries and damage to your home. Small and portable design allows it to be used almost anywhere. Convenient, built-in handle for easy carrying. 5,200 BTU heating capacity. 12.5/10.8 amps, 120 volts. 16" length x 22" width x 27" height. 6' cord length. ETL/CETL approved.



DIVAL
Safety & Supplies for Life

Item #EUH321 **\$32.50**

HEATSTAR
by ENERCO 



#HS75KT



#HS125KT



#HS175KT

Forced Air Kerosene Heaters

Heatstar Forced Air Kerosene heater features heavy construction with illuminated On-Off switch. Enclosed motor, cord wrap, fuel gauge, high output fan and large "glove-friendly" controls. Overheat safety shut-off, continuous ignition. #HS125KT and #HS175KT also have large heavy-duty handles and 10" pneumatic tires. CSA certified.

Item #	BTU/HR	Fuel Tank	Runs	Heats	Size	
HS75KT	75,000	6 gallon	11 hours	1,750 sq.ft.	32" x 14-1/4" x 17"	\$238.55
HS125KT	125,000	14 gallon	15 hours	3,000 sq.ft.	42" x 18" x 22"	\$332.30
HS175KT	175,000	14 gallon	10 hours	4,250 sq.ft.	42" x 18" x 22"	\$353.15



#K75W



#K125



#K175

L.B.WHITE

Forced Air Kerosene Heaters

Tradesman® forced air heaters are the leading portable kerosene gas heater for construction jobs and industrial work sites. They provide instant, efficient directional heat and are designed to withstand harsh working environments. Features a dependable dual-prong electronic spark ignition, heavy-duty enclosed motor and long lasting composite fuel fittings to lengthen life and trouble free operation in use. Direct-fired = 99.97% fuel efficiency. Threaded drain plug along with a built in air diagnostic system for troubleshooting ease. Temperature display and thermostat help control fuel usage. Pressure gauge included for easy serviceability. CSA certified.

Item #	BTU/HR	Fuel Tank	Runs	Heats	Size	
K75W	75,000	5 gallon	8.5 hours	1,750 sq.ft.	32" x 12" x 17"	\$215.00
K125	125,000	10 gallon	10.5 hours	3,000 sq.ft.	37 1/2" x 22 1/2" x 25"	\$299.00
K175	175,000	13 gallon	10 hours	4,250 sq.ft.	43 1/2" x 24" x 26 1/2"	\$325.00

Tradesman™ Portable Forced Air Propane Gas Heaters

Tradesman™ forced air heaters are the leading portable gas heater for construction jobs and industrial work sites. Engineered to deliver reliable, directional heat and designed to withstand harsh working environments. Features a unique 3-trial dependable electronic direct spark ignition system along with the industry's heaviest gauge combustion chamber and burner plate for long life. Variable heat output promotes fuel savings and controls maximum fuel efficiency. Direct-fired = 99.97% fuel efficiency. Superior Tri-Shield finish provides extended protection against abrasion and corrosion. CSA certified. Made in the U.S.A. 10' gas hose included.

#T170U has additional features: Adjustable front leg that provides easy direction of heat. Illuminated self diagnostic service saver light for convenient trouble-shooting. Thermostatic temperature controls allow you to adjust the heat output and ensure maximum comfort.



#T100LP



#T170U

L.B.WHITE

Item #	Fuel Consumption	BTU/HR	Heats	Size	
T100LP	4.6 lbs./hr	50,000 - 100,000	1,750 sq.ft.	25" x 10" x 14"	\$215.00
T170U	7.2 lbs./hr	125,000 - 170,000	3,000 sq.ft.	24" x 10" x 16"	\$325.00

WHITE-OUT All Purpose Heavy-Duty Floor Cleaner



- Formulated to condition and remove ice melt residue, hard-water build-up and soap scum from all surfaces
- Dissolves ice melt chlorides and other hard water films
- Great for heavily soiled floors
- When used as directed, WHITE-OUT will not harm any surface not affected by water
- Highly concentrated and economical
- Use on concrete, linoleum, vinyl, brick, terrazzo, and ceramic floors
- Sold by the gallon, 4 gallons per case



Item #DV2014 **\$14.00**/GL



Anti-Fatigue Rubber Mat, Black, 3' x 3'

- Heavy duty, long lasting performance
- Ribbed bottom to allow for drainage
- Connectors make it easy to assemble
- Reduces leg and back fatigue

Superior PVC Sponge Kneeling Pad, 8" x 16"

- Made of sturdy industrial grade material
- Great durability and tensile strength
- 11/16" thick

Item #155419 **\$17.75** Item #ANSTK8X16 **\$10.40**



Scratch-Free Snow Brush

- Innovative EVA foam brush is freeze-resistant
- Elliptical aluminum handle with comfort grip
- Innovative head design helps to remove snow in smaller and hard to reach areas
- Won't scratch your car

Item #ABTT28 28" **\$12.99**

Item #ABTT36 36" **\$16.99**

Razor-Back® Industrial Grade Forged Head Scraper

54" Handle, Socket Pattern 7" x 6" Blade

Item #78202 **\$26.85**

Multi Purpose Forged Head Ice Scraper

48" Handle, 6" x 5" Blade

Item #1646200 **\$21.65**

Heavy Duty Forged Head Ice Scraper

54" Handle, 4" x 9" Blade

Item #81104 **\$22.40**

Heavy Duty Forged Ice Scraper

54" Handle, 7" x 9" Blade

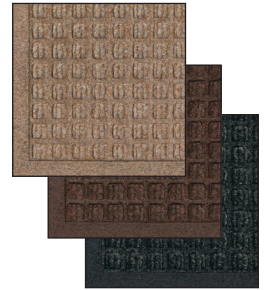
Item #81109 **\$24.75**

For more info please visit www.DiValSafety.com

Waterhog™ Classic Indoor/Outdoor Floor Mat



- Highly stain resistant, 24 oz square yard solution dyed polypropylene fabric
- 3/8" thick bi-level surface effectively removes and stores dirt and moisture
- Rubber reinforced face nubs extending the performance life of the product
- Unique "Water Dam" allows the mat to hold up to 1-1/2 gallons of water per square yard
- Anti-static and certified slip resistant by National Floor Safety Institute



#2001510305 Med. Brown 3' x 5' **\$65.10**

#2001510406 Med. Brown 4' x 6' **\$102.35**

#2001520305 Dark Brown 3' x 5' **\$65.10**

#2001520406 Dark Brown 4' x 6' **\$102.35**

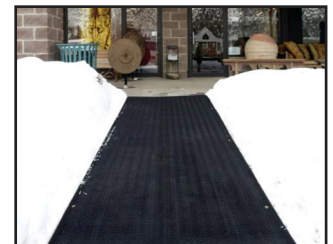
#2001540305 Charcoal 3' x 5' **\$65.10**

#2001540406 Charcoal 4' x 6' **\$102.35**



HeatTrak Electric Entrance Mat

- Efficient and convenient way to eliminate snow and ice accumulation around the home or facility
- HeatTrak products are made of an electrically operated heating element sandwiched between two protective surfaces of non-slip rubber
- As durable as automobile tires, allowing them to endure harsh wear
- Plugs directly into any standard 120V outlet, using its own inline ground fault circuit interrupter



Item #HTM245 24" x 5' **\$387.50**

Item #HTM365 36" x 5' **\$588.55**

Item #HTM3610 36" x 10' **\$1166.70**

Item #HTM3615 36" x 15' **\$1750.00**



#78202

#1646200

#81104

#81109

**True Temper®
Snow Shovels & Pushers**



**Klondike Poly
Snow Pusher**

47-3/4" Handle, 11" x 18" Blade

Item #1575200 **\$8.10**

**Klondike Poly
Snow Shovel**

50-1/2" D-Handle, 14" x 18" Blade

Item #1574600 **\$10.05**

**Garant Industrial Grade
Polypro Snow Pusher**

50-1/2" D-Handle, 14" x 18" Blade

Item #GIPP26KDU **\$20.99**

**Garant Industrial Grade
Polypro Snow Shovel**

50-1/2" D-Handle, 14" x 18" Blade

Item #GIPM18KDU **\$17.99**

**True Temper® Poly
Snow Pusher**

48 1/4" Handle, 11" X 24" Blade

Item #1635800 **\$23.95**

**True Temper® Poly
Snow Shovel**

42 1/4" Handle, 13 1/2" X 20" Blade

Item #1649800 **\$23.95**

For more info please visit www.DiValSafety.com

Lightweight Aluminum Scoop Shovel

29" Handle, #12 Style Scoop

Item #53132 **\$44.40**

Steel Deep Scoop Shovel

39" Handle, 14-1/2" x 15-1/2" Blade

Item #79804 **\$37.50**

Multi Purpose Steel Scoop Shovel

46" Handle, 11-1/2" x 14-1/2" Blade

Item #79805 **\$33.85**

Multi Purpose Steel Scoop Shovel

34" Handle, 11-1/2" x 14-1/2" Blade

Item #79809 **\$25.85**

For more info please visit www.DiValSafety.com



Heavy Duty Sleigh Shovel

For heavy snowfalls, no tool is faster or easier to use than a True Temper snow sleigh. 24" blade. 59-1/2" long.

Item #1600900 **\$51.60**

Auto Boss® Collapsible Snow Shovel

Light weight, portable, and it's compact design offers easy storage for the back seat, trunk, or bag. 32" in overall length.

Item #1588400 **\$13.05**

Lightweight Aluminum Snow Roof Rake

This 17' Snow Roof Rake removes snow build-up from roof and eaves to prevent damage. 6-1/2" x 24" poly blade.

Item #GPRR24 **\$46.35**

For more info please visit www.DiValSafety.com

SURESPREAD™ Professional Salt & Ice Melt Push Spreader

- Solid steel linkage opens and closes the gate in incremental steps
- 43% larger gate opening to allow product to flow smoothly
- T-handle with comfort grips feature gate control at fingertips
- Steel frame fully supports hopper at its base
- Fully pneumatic tires provide stability over uneven terrain
- Patent pending poly conical auger helps agitate product and minimize clumping
- Adjustable 360° salt baffle system helps spread salt only where you want it
- Enclosed metal gears withstand the elements
- Unique two-piece hopper design allows for easy replacement of hopper
- All Season Spreader spreads salt/halite/ice-melt, fertilizer, seed and more with a simple gate adjustment
- Chapin SURESPREAD™ technology ensures an even pattern of distribution by its innovative gate design, and strategic placement of gate openings
- #82108N Grate and rain cover included



Item #82088N Powder Coated Steel Handle 12" Pneumatic Tires 80 lbs Capacity **\$192.95**

Item #82108N Stainless Steel Handle 14" Pneumatic Tires 100 lbs Capacity **\$310.00**

SURESPREAD™ Residential Salt & Ice-Melt Push Spreader

- Patent pending poly conical auger helps agitate product and minimize clumping
- 26% larger gate opening to allow product to flow smoothly
- Adjustable 360° salt baffle system helps spread salt only where you want it for maximum coverage and efficiency
- 12" fully pneumatic tires easily handle rough terrain
- Heavy duty stainless steel powder-coated frame fully supports hopper at its base
- Grate and rain cover included
- 80lbs capacity granular Ice-Melt, pretreat and De-Ice solutions, salt



Item #80088 **\$123.75**

Rubbermaid® 64oz Utility Scoop



- Made of durable, break-resistant clear polycarbonate plastic
- Offers better weight distribution
- Smooth surface for easy cleaning
- Dishwasher-safe, BPA-Free
- Made in the USA



Item #2885SS **\$9.25/EA**

Sprayon® Heavy Duty Equipment & Surface Deicer

- Melts ice, snow, frost on contact without harming the vehicle's finish
- Effective in sub-zero temperatures
- Will not smear
- Spray delivery up to 20 ft.
- Thaws ice on equipment, auto and fleet windshields, head and tail lights, locking mechanisms, doors, icy steps, small surface areas such as walkways, and much more!



Item #SP704 15 oz **\$6.25/EA**

American Rock Salt Ice Melter, 50 lb Bag

- Fast acting multiple-sized crystals with superior melting power
- Smallest crystals dissolve quickly while larger crystals last for extended period of time
- Safely used on most surfaces from blacktop, wood, stone, and gravel to properly cured air-entrained concrete



Item #49100 **\$7.75/BG**

Aspen® Snow & Ice Melter, 50 lb Bag

- Blend of sodium chloride and magnesium chloride
- Efficient and affordable ice melt product
- Contains patented inhibitors, designed to reduce impact to metal and spreading equipment
- Melts down to -7°F
- Environmentally friendly
- 67% less corrosive than rock salt
- Safer for concrete



Item #57070 **\$15.75/BG**

Pro Series® 550 Select Blend, 50 lb Bag

- Select Blend is sodium chloride based and contains potassium chloride
- Melts ice and snow to -0°F/-18°C
- Won't stain carpets or floors
- Safe for pets when used as directed
- Safe to handle; won't harm skin
- Provides extended shelf life



Item #57050 **\$15.60/BG**